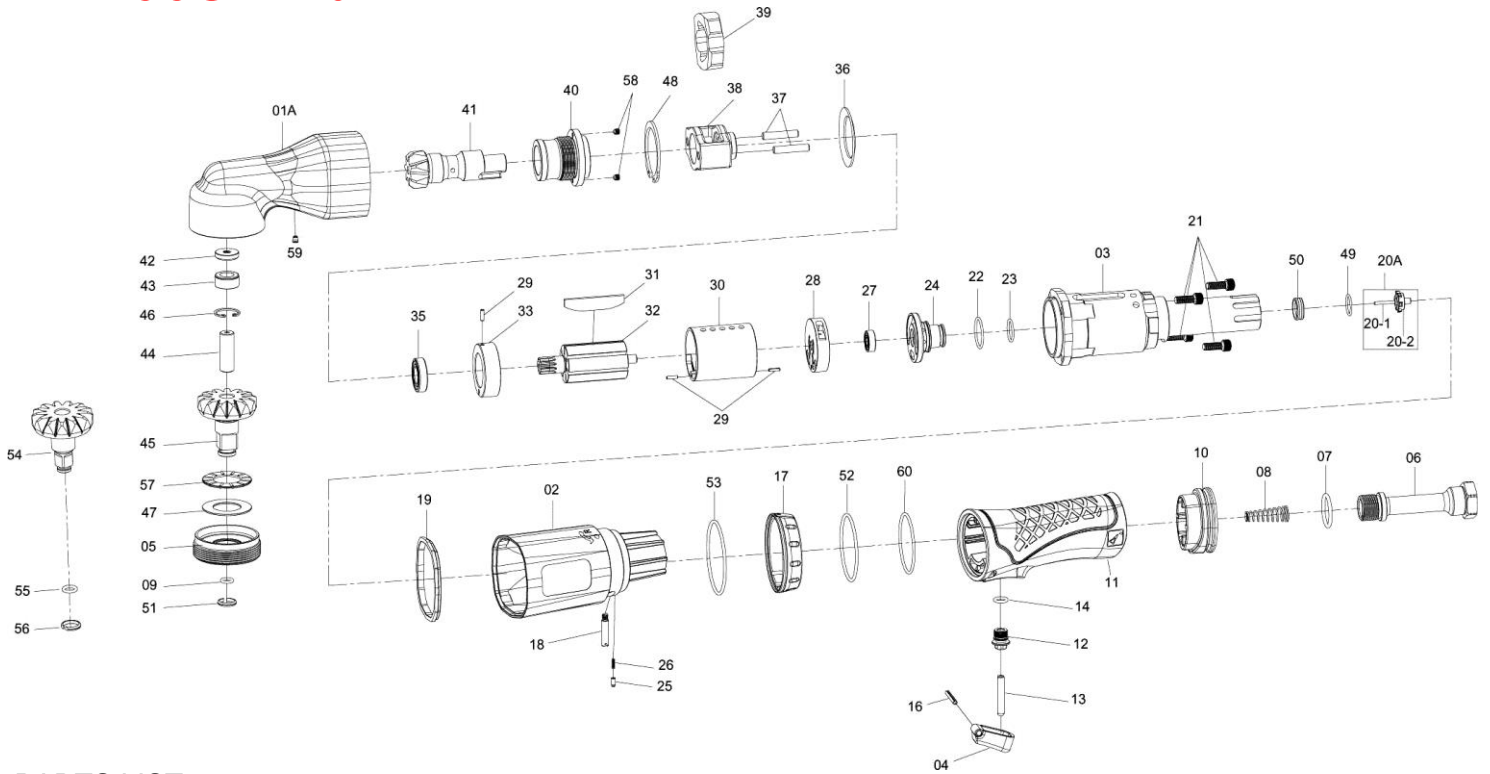


ST-5235 3/8" SQ. DR. SUPER DUTY AIR ANGLE IMPACT WRENCH (JUMBO HAMMER)

ST-5245 1/2" SQ. DR. SUPER DUTY AIR ANGLE IMPACT WRENCH (JUMBO HAMMER)

EA155SD-10



PARTS LIST

No.	Parts No.	Description	Q'ty
1A	5245-01A	Hammer Case Assembly [Incl.: 42, 43, 59]	1
2	5245-02	Housing	1
3	5245-03	Motor Housing	1
4	5245-04	Trigger	1
5	5245-05	Lock Ring	1
6	5245-06A	Air Inlet (PT19)	1
	5245-06B	Air Inlet (NPT18)	1
7	5245-07	O-Ring	1
8	5245-08	Spring	1
10	5245-10	Exhaust Deflector	1
11	5245-11	Motor Housing	1
12	5245-12	Bushing	1
13	5245-13	Throttle Valve Plunger	1
14	5245-14	O-Ring	1
16	5245-16	Spring Pin	1
17	5245-17	Reverse Knob	1
18	5245-18	Pin	1
19	5245-19	Gasket	1
20A	5245-20A	Throttle Valve Assembly [Incl 20-1, 20-2]	1
21	5245-21	Screw	4
22	5245-22	O-Ring	1
23	5245-23	O-Ring	1
24	5245-24	Reverse Valve	1
25	5245-25	Pin	1
26	5245-26	Spring	1
27	5245-27	Bearing	1
28	5245-28	End Plate	1
29	5245-29	Spring Pin	3
30	5245-30	Cylinder	1
31	5245-31	Rotor Blade	7
32	5245-32	Rotor	1
33	5245-33	End Plate	1
35	5245-35	Bearing	1

No.	Parts No.	Description	Q'ty
36	5245-36	Washer	1
37	5245-37	Hammer Pin	2
38	5245-38	Hammer Frame	1
39	5245-39	Hammer	1
40	5245-40	Bushing	1
44	5245-44	Pin	1
45	5245-45A	1/2" Standard Anvil Assembly [Incl.: 09, 41, 45, 51]	1
54	5235-54A	3/8" Standard Anvil Assembly [Incl.: 55, 41, 54, 56]	1
46	5245-46	Retainer	1
47	5245-47	Thrust Washer	1
48	5245-48	Retainer	1
49	5245-49	O-Ring	1
50	5245-50	Throttle Valve Seat	1
52	5245-52	O-Ring	1
53	5245-53	O-Ring	1
57	5245-57	Needle Bearing	1
58	5245-58	Screw	2
60	5245-60	Gasket	1
	5245-TK	Tune-Up Kit [Incl. 7, 8, 9, 14, 19, 22, 23, 26, 31(7), 49, 51, 52, 53, 60]	
	5235-TK	Tune-Up Kit [Incl. 7, 8, 14, 19, 22, 23, 26, 31(7), 49, 52, 53, 55, 56, 60]	
	5245-TK3	1/2" Angle Head Assembly [Incl. 1, 5, 09, 40, 42, 43, 44, 46, 47, 48, 51, 45A, 57, 58, 59]	
	5235-TK4	3/8" Angle Head Assembly [Incl. 1, 5, 40, 42, 43, 44, 54A, 46, 47, 48, 55, 56, 57, 58, 59]	