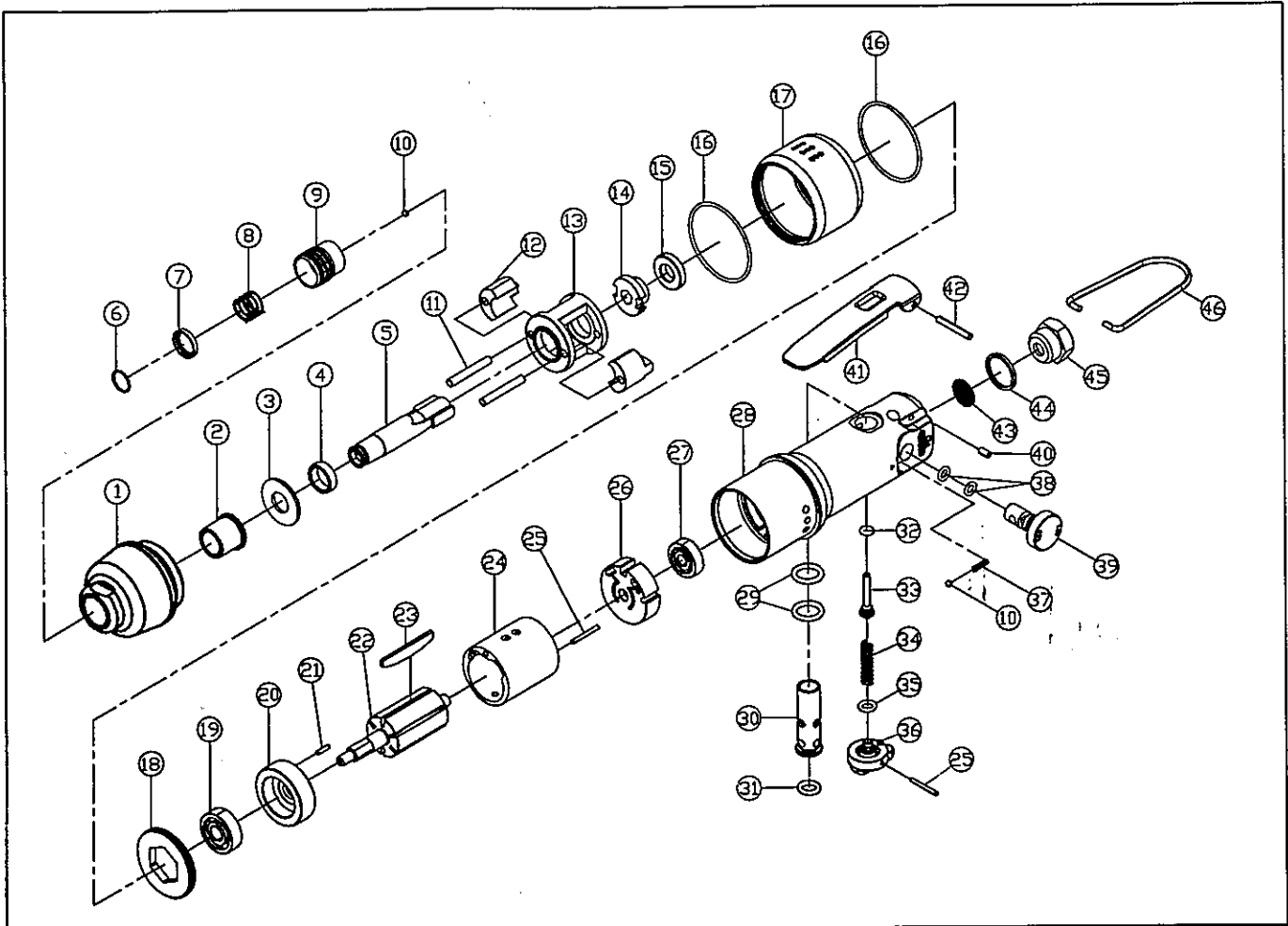


EA156DC-1

AIR IMPACT SCREWDRIVER



Item No.	Part No.	Description	Q'ty	Item No.	Part No.	Description	Q'ty
1	556001	HAMMER CASE	1	28	556 028	MOTOR HOUSING	1
2	556002	HAMMER CASE BUSHING	1	29	OR-P11	O-RING	2
3	556 003	SPACER	1	30	556 030	REVERSE VALVE BUSHING	1
4	556 004	ANVIL BUSHING	1	31	OR7718	O-RING	1
5	556 005	ANVIL	1	32	OR2918.90	VALVE STEAM O-RING	1
6	556006	SPRING HOLDER	1	33	545033	VALVE STEM	1
7	556007	QC. SPACER	1	34	S0417	SPRING	1
8	S1112	SPRING	1	35	OR4622	O-RING	1
9	556009	RETAINING SLEEVE	1	36	556 036	REVERSE VALVE LEVER	1
10	STB3175	STELL BALL	2	37	S0210	SPRING	1
11	556011	HAMMER PIN	2	38	OR5318	O-RING	2
12	556012	HAMMER	2	39	556 039	REGULATOR	1
13	556013	HAMMER CAGE	1	40	HEXM306	SCREW	1
14	556014	CAM	1	41	556 041	THROTTLE LEVER	1
15	556015	MOTOR SPACER	1	42	SPP324	SPRING PIN	1
16	OR4015	O-RING	2	43	556 043	FILTER	1
17	556017	DEFLECTOR	1	44	556 044	GASKET	1
18	556018	LOCKING NUT	1	45	556 045	AIR INLET	1
19	BB608ZZ	BALL BERING	1	46	556046	HANGER	1
20	556020	FRONT END PLATE	1				
21	SPP208	PIN	1				
22	556022	ROTOR	1				
23	556023	BLADE	6				
24	556024	CYLINDER	1				
25	SPP218	PIN	2				
26	556026	REAR END PLATE	1				
27	BB626ZZ	BALL BERING	1				