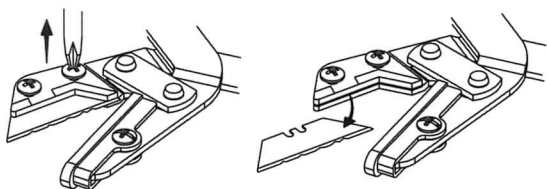


DIAGRAM FOR BLADE ASSEMBLY

1. Release the two screws.
2. Remove the used blade.



3. Insert the new blade into the blade holder.
4. Tighten the two screws.

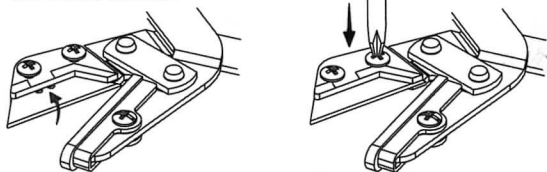
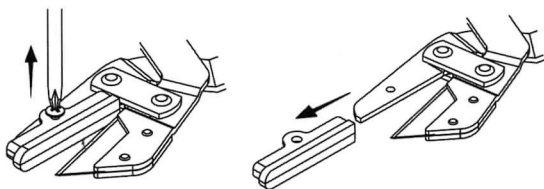
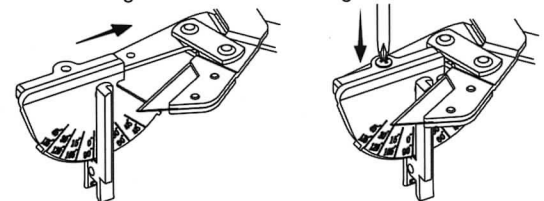


DIAGRAM FOR TWO CHANGEABLE BASES

1. Release the screw.
2. Remove the blade base.

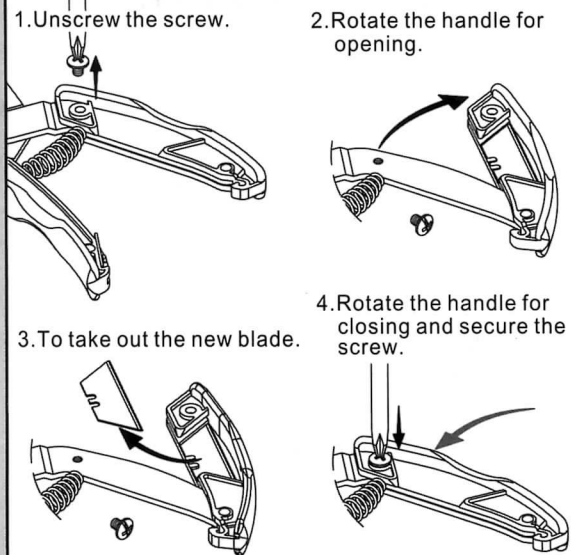


3. Put the angular scale on.
4. Tighten the screw.



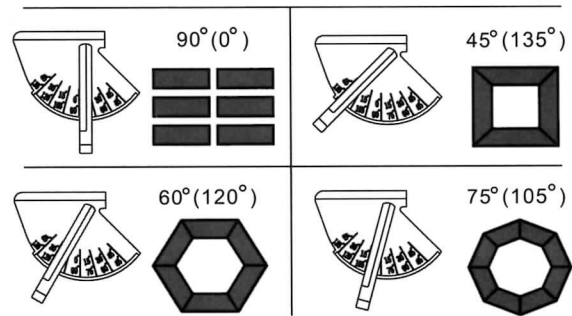
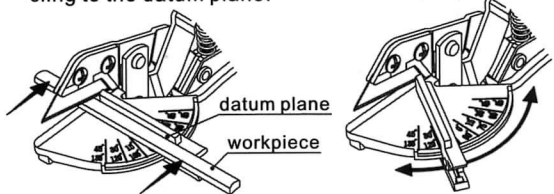
USE DIAGRAM FOR BLADE CARTRIDGE

1. Unscrew the screw.
2. Rotate the handle for opening.
3. To take out the new blade.
4. Rotate the handle for closing and secure the screw.



USING METHOD OF ANGULAR SCALE

1. The workpiece should cling to the datum plane.
2. To rotate the datum plane.



Warning!

- Keep out of reach of children.
- Blades are extremely sharp, and should be handled and disposed of with great care.
- Always wear eye protections, such as goggles, face shields when working with tools.
- Cutters should be used for cutting only, bending or prying could cause the blade to break and result in serious bodily injury.