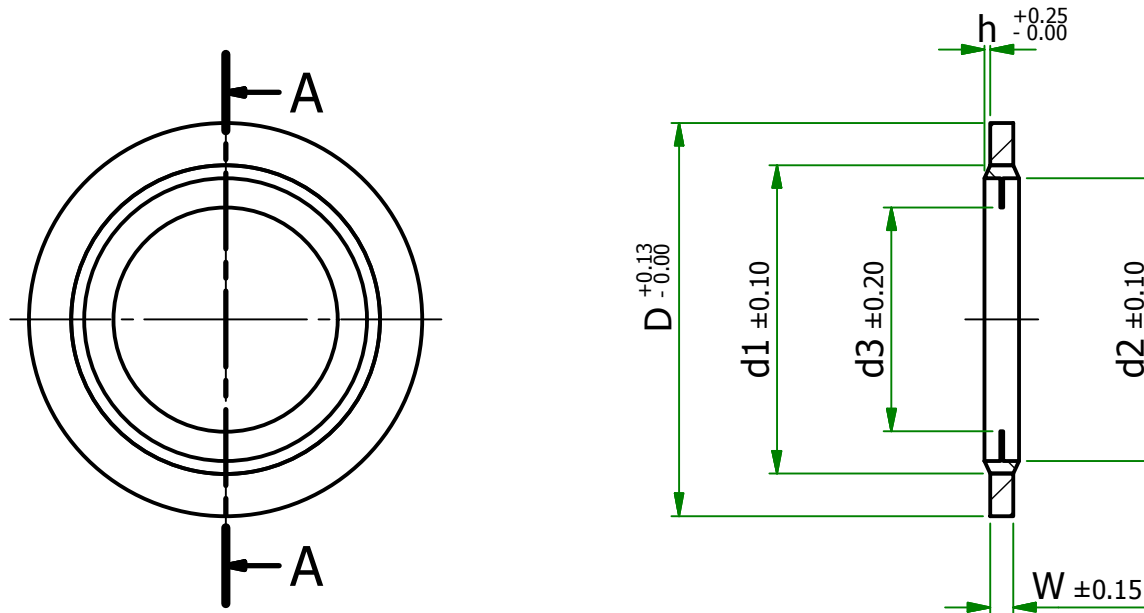


© 2011 Moss Plastic Parts Ltd. All rights reserved.
Registered in England, Company No. 547495.
Registered Office: Avebury House,
201-249 Avebury Boulevard, Milton Keynes, MK9 1AU

Condition of Sale can be found on our website:
mossexpress.com. Moss Express is a trading name of Moss
Plastic Parts Ltd.

Moss Plastic Parts Ltd does not warrant that the files will be
error free and may create new versions ("Upgrades") at any
time, which may correct such errors. Moss Plastic Parts Ltd
has no obligation to notify you of such upgrades. Any
upgraded file will be published to the website, when it
becomes available.

You are not permitted to load any of the files on to a network
server for the purposes of distribution to one or more other
computer(s) on that network or to effect such distribution.
Moss Plastic Parts Ltd shall not be liable for any loss or
damage whatsoever or however caused, arising directly or
indirectly from the use of the files.



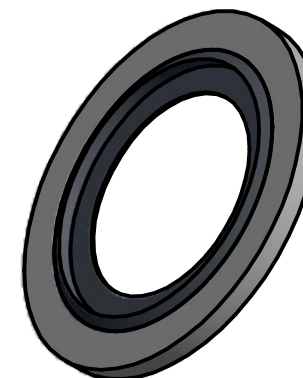
A-A

ITEM	To Suit BOLT Ø	D	d1	d2	d3	W	h
490080	8	14.00	10.40	8.70	6.40	1.00	0.30
490081	10	16.00	12.40	10.70	8.05	1.50	0.40
490082	12	18.00	14.30	12.70	9.73	1.50	0.40
490083	16	24.00	18.40	16.70	13.41	1.50	0.40
490084	18	26.00	20.40	18.70	14.76	1.50	0.40
492253	20	28.00	22.50	20.70	16.76	1.50	0.40
490085	22	30.00	24.40	22.70	18.74	2.00	0.40
490086	24	32.00	26.40	24.70	20.11	2.00	0.40
492254	26	35.00	28.40	26.70	22.30	2.00	0.40
492255	30	39.00	33.00	31.00	25.70	2.00	0.40

品番

EA423MW-8
EA423MW- 10
EA423MW- 12
EA423MW- 16
EA423MW- 18

EA423MW-22
EA423MW-24



UNCONTROLLED

UNLESS OTHERWISE STATED

ALL DIMENSIONS IN mm				DO NOT SCALE	
LINEAR TOLERANCE				THIRD ANGLE PROJECTION	
SIZE	(0)	(0.0)	(0.00)		
0-10mm	±0.5	±0.15	±0.10		
10-30mm	±0.5	±0.20	±0.15		
30-50mm	±0.5	±0.30	±0.20		
50-100mm	±0.8	±0.50	±0.25		
100-200mm	±1.5	±0.80	±0.40		
200-300mm	±2.0	±1.20	±0.80		
300-500mm	±3.0	±2.00	±1.00	ANGULAR TOLERANCE ±0.5 DEGREES	
+500mm	±5.0	±3.00	±1.50	UNSPECIFIED RADII 0.25mm	
DRAFT ANGLE 0.5 DEGREES					
ORG.SCALE	2:1				

MATERIAL **STEEL / NITRILE**

ITEM No.

TITLE **SELF-CENTERING BONDED
WASHERS - METRIC**

DWG.No.

SR6157

ISSUE No.

1