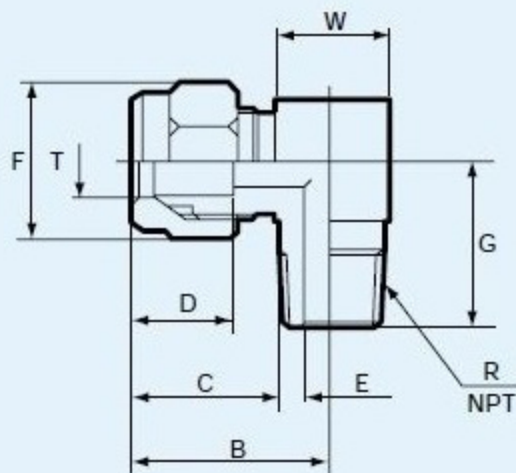


**ME** メール エルボ  
MALE ELBOW



	T	TUBE OD		R (PT) size	Part No.								B	C	D	E	F	G	W
		mm	inch		ME		ME(NPT)		MBT		MRT								
	3	1/8	1/8	30- 3ME 2-C	30- 3ME 2N-C	30- 3MBT 2-C	30- 3MRT 2-C	15	9	5	2	8	15	11					
			1/4	30- 3ME 4-C	30- 3ME 4N-C	30- 3MBT 4-C	30- 3MRT 4-C	16	9	5	2	8	20	14					
EA425HB-41 EA425HB-42	4	-	1/8	30- 4ME 2-C	-	30- 4MBT 2-C	30- 4MRT 2-C	17	11	7	3	10	16	11					
			1/4	30- 4ME 4-C	-	30- 4MBT 4-C	30- 4MRT 4-C	18	11	7	3	10	20	14					
EA425HB-61 EA425HB-62 EA425HB-63	6	1/4	1/8	30- 6ME 2-C	30- 6ME 2N-C	30- 6MBT 2-C	30- 6MRT 2-C	20	14	10	4	12	17	11					
			1/4	30- 6ME 4-C	30- 6ME 4N-C	30- 6MBT 4-C	30- 6MRT 4-C	21					21	14					
			3/8	30- 6ME 6-C	30- 6ME 6N-C	30- 6MBT 6-C	30- 6MRT 6-C	23					22	17					
			1/2	30- 6ME 8-C	-	30- 6MBT 8-C	30- 6MRT 8-C	25					28	22					
EA425HB-81 EA425HB-82 EA425HB-83	8	5/16	1/8	30- 8ME 2-C	30- 8ME 2N-C	30- 8MBT 2-C	30- 8MRT 2-C	25	18	12	6	17	20	14					
			1/4	30- 8ME 4-C	30- 8ME 4N-C	30- 8MBT 4-C	30- 8MRT 4-C	25					24	14					
			3/8	30- 8ME 6-C	30- 8ME 6N-C	30- 8MBT 6-C	30- 8MRT 6-C	27					25	17					
			1/2	30- 8ME 8-C	-	-	30- 8MRT 8-C	29					29	22					
EA425HB-102 EA425HB-103 EA425HB-104	10	3/8	1/8	30- 10ME 2-C	30- 10ME 2N-C	-	-	30	21	16	8	22	22	17					
			1/4	30- 10ME 4-C	30- 10ME 4N-C	30- 10MBT 4-C	30- 10MRT 4-C	30					26	17					
			3/8	30- 10ME 6-C	30- 10ME 6N-C	30- 10MBT 6-C	30- 10MRT 6-C	30					27	17					
			1/2	30- 10ME 8-C	30- 10ME 8N-C	30- 10MBT 8-C	30- 10MRT 8-C	32					31	22					
EA425HB-122 EA425HB-123	12	-	1/4	30- 12ME 4-C	-	30- 12MBT 4-C	30- 12MRT 4-C	36	25	18	10	26	27	22					
			3/8	30- 12ME 6-C	30- 12ME 6N-C	30- 12MBT 6-C	30- 12MRT 6-C	36					28	22					
			1/2	30- 12ME 8-C	30- 12ME 8N-C	30- 12MBT 8-C	30- 12MRT 8-C	36					32	22					
			3/4	30- 12ME 12-C	-	-	-	40					37	30					
	-	1/2	1/4	30- 12.7ME 4-C	-	30- 12.7MBT 4-C	-	36	25	18	10	26	27	22					
			3/8	30- 12.7ME 6-C	30- 12.7ME 6N-C	30- 12.7MBT 6-C	30- 12.7MRT 6-C	36					28	22					
			1/2	30- 12.7ME 8-C	30- 12.7ME 8N-C	30- 12.7MBT 8-C	30- 12.7MRT 8-C	36					32	22					
			3/4	30- 12.7ME 12-C	30- 12.7ME 12N-C	-	30- 12.7MRT 12-C	40					37	30					
13	-	3/8	30- 13ME 6-C	-	30- 13MBT 6-C	30- 13MRT 6-C	36	25	18	10	26	28	22						
			1/2	30- 13ME 8-C	-	-	-					36	32	22					

NPTサイズ：ネジサイズがNPT[アメリカ管用ネジ]になっています。

NPT size: The pipe thread size "P" conforms to NPT (National Pipe Tapered).

全ての寸法単位はミリメートルです。●Wは四角対辺の寸法です。●Part No.の斜体は非標準品です。

All dimensions are in millimeters. •W expresses the size of the opposite side of a square. •Part numbers in italics indicate nonstandard items.