

# Toolmakers Steel Vice Super Precision

**TMV-23**

Single piece tool vice fully hardened (55-60 HRC) and tempered to ensure stability and durability

All surfaces are precision ground

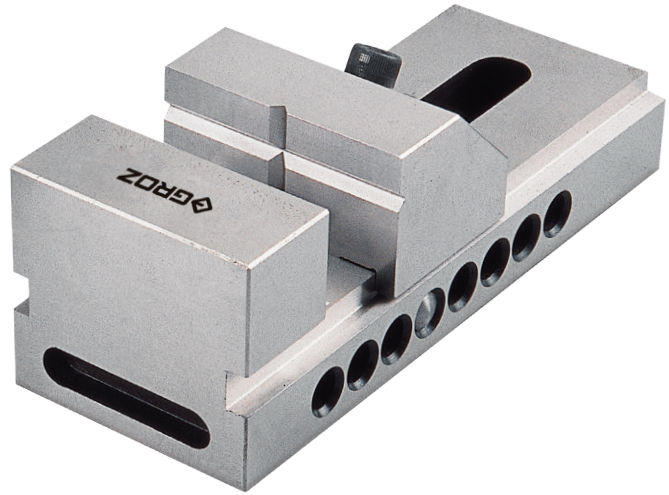
Movable jaw is narrower than the base enabling vices to be used on either sides in addition to the base

Rapid positioning notches allow the vice to be locked in any position by a hex key provided with the vice

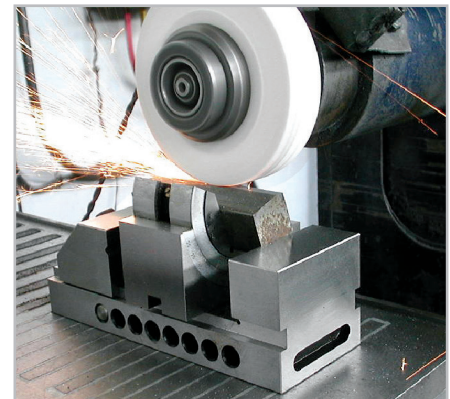
Vee grooves in the sliding jaw, both horizontal and vertical, facilitate holding of round jobs

Jaw pressure on work piece is forward and downward for repeatable positioning and maximum holding power

Ideal for use in tool manufacturing, on grinding & milling machines, in engraving & jig boring applications, for measurement and inspection work and in manufacturing processes that require highest standards of clamping accuracy. These vices are particularly suitable for erosion work



Toolmaker's Vice being used to hold a block of steel during grinding



## SPECIFICATIONS

ACCURACIES	GUARANTEED		ACTUAL AVERAGE	
FLATNESS OF BEARING SURFACE	0.00031"	8 μ	0.00019"	5 μ
PARALLELISM OF SLIDE FACE & TOP FACE TO BOTTOM FACE	0.00031"	8 μ	0.00019"	5 μ
SQUARENESS OF SIDES & SLIDE FACES	0.00047"	12 μ	0.00031"	8 μ
PARALLELISM OF SIDES & SLIDE WAYS	0.00031"	8 μ	0.00019"	5 μ
SQUARENESS OF FIXED JAW BACK TO BOTTOM SURFACE & SIDES	0.00047"	12 μ	0.00031"	8 μ
PARALLELISM OF FIXED JAW & LENGTH FACES	0.00031"	8 μ	0.00019"	5 μ
PARALLELISM OF JAW FACES	0.00031"	8 μ	0.00019"	5 μ
SLIDING JAW SQUARE TO BOTTOM FACE WHEN VICE IS CLAMPED	0.00047"	12 μ	0.00031"	8 μ
SLIDING JAW FACE PARALLEL WHEN VICE IS CLAMPED	0.00031"	8 μ	0.00019"	5 μ

## ORDERING INFORMATION

CAT NR.	ORD NR.	JAW WIDTH		JAW OPENING		JAW DEPTH		NET WEIGHT (KG)	BOX QTY.
		(INCH)	(MM)	(INCH)	(MM)	(INCH)	(MM)		
★ TMV/23	35201	2-7/8	73	4-25/16	108	1-3/8	35	3.4	8

★ Best Seller