

BESSEY® Industrial bench vises

Heavy Duty

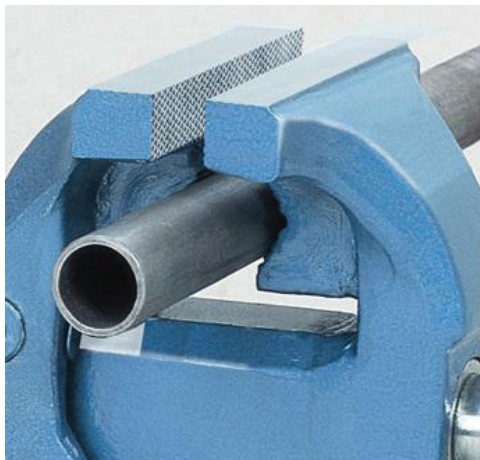
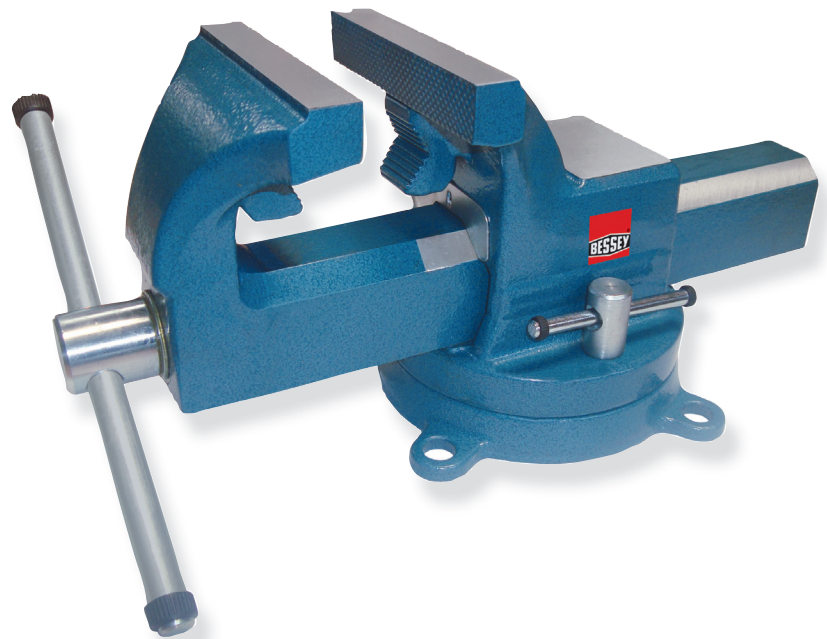


Simply better.

100% Guaranteed Unbreakable drop forged moveable jaw, stationary jaw & base* for the toughest jobs!

Features & Benefits

- **Guaranteed Unbreakable** for dependability* & long service life
- **90,000 PSI Drop Forged Alloy Steel Construction** for top performance, moveable jaw, stationary jaw & base
- **Perfect Parallel Jaw Design** for secure clamping
- **Precision Ground & Induction Hardened Jaws & Anvil** for dependability & long life, HRC 52-58
- **Long Length Alloy Steel Spindle Handle** for fast, high force clamping
- **Long Length Alloy Steel Swivel Base Locking Handles (2)** for fast, easy, high force clamping of swivel base
- **360 Degree Rotation Drop Forged Alloy Steel Swivel Base** for versatile positioning of parts
- **Made in Europe**
Quality standards; ISO14001, ISO9001, Q1, TÜV SUED /GS



Forged Pipe Jaws

*Bessey vises with drop forged components are guaranteed against breakage in normal use. This guarantee does not cover abuse, improper use, or handling and storage of the product. Never use cheater bars or pipes to extend the spindle handle. This will void the warranty and can cause injury.

Industrial bench vises

	BV-DF4SB EA525BK-1	BV-DF5SB EA525BK-2	BV-DF6SB EA525BK-3	BV-DF8SB
Jaw Width	4"	5"	6"	8"
Jaw Opening	4 1/4"	6 1/2"	7"	10"
Throat Depth	2 3/8"	3"	4"	4 1/8"
Pipe Capacity	1/4" - 3"	1/4" - 3"	1/4" - 5"	1/4" - 6"
Length	12"	15"	19"	23 3/4"
Width**	7"	8 1/4"	10"	10 3/4"
Height**	5 1/2"	6 3/4"	8 3/4"	9 1/2"
Anvil Size	1 7/16" x 2"	2" x 2 3/4"	2 1/2" x 3 1/8"	3" x 3 5/8"
UPC Code	788502201469	788502201476	788502201483	788502202350

** Includes swivel base.

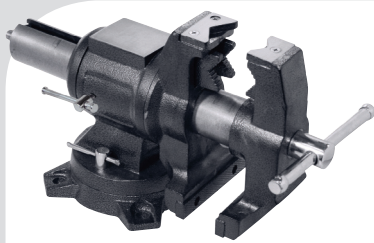
Rev. Jun/14



BESSEY® Vises



Simply better.



BV-MPV5

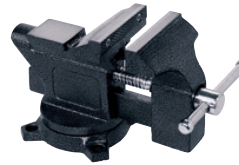
- Pipe and serrated jaws
- Jaw rotates 360°
- 360° swivel base
- Built-in anvil
- 3 mounting holes
- 2 lockdowns



EA525BJ-1
EA525BJ-2

BV-HD40 & BV-HD60

- Serrated jaws
- 360° swivel base
- Built-in anvil
- 3 mounting holes
- 2 lockdowns



EA525BG-1

BV-HW45

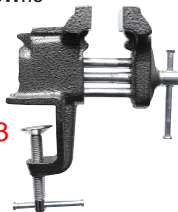
- Serrated jaws
- 270° swivel base
- Built-in anvil
- 4 mounting holes
- 1 lockdown



EA525BH-1

BV-DP40

- Serrated jaws
- Elongated holes for easy fastening onto a drill press or work surface



EA525BG-3

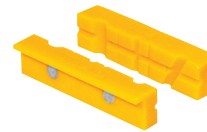
BV-C030

- Cast in pipe jaws
- Double steel guide bars
- Clamps on work surfaces up to 1.5"
- 1" pipe capacity



BV-VB

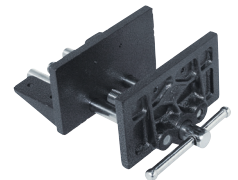
- Lightweight, yet sturdy, cast aluminum body
- 360° swivel rotation head for easy positioning
- Convenient vacuum base for mounting on any smooth surface



EA525XS-1

BV-NVJ

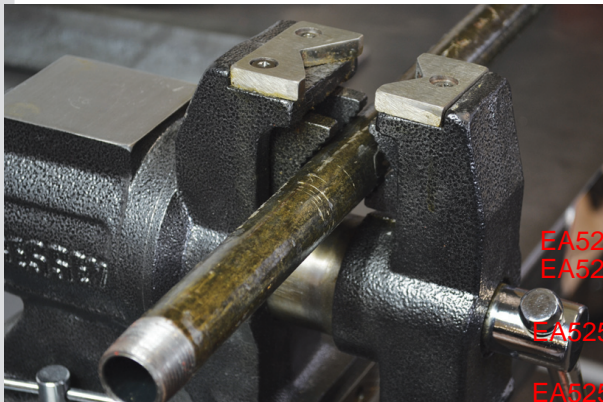
- Designed to fit any 3-6 in. ferrous vise jaw
- Magnetic backing
- Great for holding wood, metal & tubing without marring



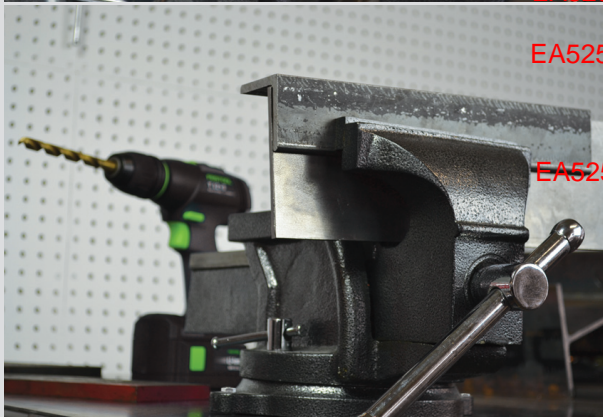
BV-WV65

- Cast iron body
- 6" jaws
- 6" opening

Note: All vises should be securely fastened to a stable surface prior to use.



EA525BJ-1
EA525BJ-2



EA525BG-3

EA525XS-1

Vises

	Body Material	Jaw Width	Jaw Opening	Throat Depth	Pipe Capacity	Approx. Weight	Case Qty.
Multi-purpose vise							
BV-MPV5	gray cast	5"	5"	3"	2"	43 lbs.	1
General purpose vises							
BV-HD40	gray cast	4"	4"	2"	N/A	17 lbs.	1
BV-HD60	gray cast	6"	6"	3"	N/A	44 lbs.	1
Workshop vise							
BV-HW45	gray cast	4 1/2"	4 1/2"	1 3/4"	1"	11 lbs.	1
Drill press vise							
BV-DP40	gray cast	4"	4 1/4"	1 1/8"	N/A	9 lbs.	1
Light duty clamp-on vise							
BV-C030	gray cast	3"	3"	1 1/2"	3/4"	5 lbs.	1
Vacuum base vise							
BV-VB	aluminum	N/A	2 3/4"	3"	N/A	4.50 lbs.	1
Multi-purpose vise jaws							
BV-NVJ	plastic	N/A	3"-6"	N/A	N/A	0.50 lbs.	1
Light duty wood vise							
BV-WV65	gray cast	6"	6"	2 5/8"	N/A	8.50 lbs.	1

Note: All vises should be securely fastened to a stable surface prior to use.

