

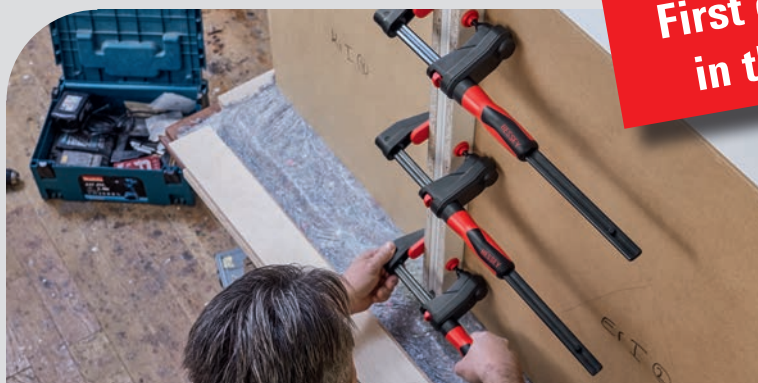
GearKlamp

Works "big" in a small space



Simply better.

First of its kind
in the world



BESSEY is introducing a first of its kind in the world with the GearKlamp GK: The clamp that conveniently masters clamping applications in a perfect way – even in the tightest spaces. For example, the compact BESSEY GearKlamp GK can be skill used even in places that were previously difficult or impossible for clamping tools to access.

Unique compact design

The GearKlamp is extremely flexible and can even be used in the tightest of spatial conditions:

- due to the patented mechanism that separates the handle from the spindle and positions it around the rail
- due to the crossed v-grooves on the upper section for securely holding round, pointed and angular components



Ergonomic use

The clamp contains all kinds of clamping technology and guarantees the user greater comfort:

- due to the high-quality two-component plastic handle for safe handling
- due to the quick-release shift button for quickly adjusting the sliding bar
- due to the swivelling pressure plate for exact alignment of the workpiece

Robust technology

Meeting the BESSEY quality promise was a focus in development, and so the transmission clamp is also a winning choice in terms of durability:

- due to the use of high-quality materials, such as fibreglass-reinforced polyamide for the top and bottom, as well as hardened, tempered and burnished steel for the profiled rails
- due to the sliding bar's plastic housing, the driving mechanism is protected from dust and splintering

GK in action
YouTube channel



GearKlamp

Works "big" in a small space



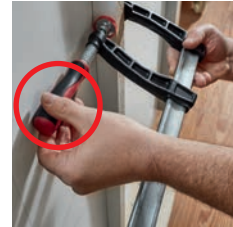
Simply better.



Clamping in a narrow section can cause problems when using classic screw clamps and lever clamps as the handle prevents the clamp from being placed correctly.



The risk of damage to the workpiece and injury increases in confined working areas when clamping tools with protruding components are used.



The clamping in front of a closed surface is not possible due to the positioning of the handle with classic screw clamps and lever clamps as the handle cannot be actuated.

The new GearKlamp GK from BESSEY makes it conveniently possible – without additional aids, with enhanced ergonomics, with reduced risk of damage or injury



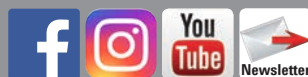
GearKlamp GK

	Order-No.	Opening	Throat depth	Rail	kg	qty.	V3
		mm	mm	mm			
EA526SB-150	GK15	150	60	19 x 6	0.62	6	
EA526SB-300	GK30	300	60	19 x 6	0.73	6	
EA526SB-450	GK45	450	60	19 x 6	0.84	6	
EA526SB-600	GK60	600	60	19 x 6	0.95	6	

- High-quality two-component plastic handle positioned around the rail, so clamp can be used in tight spaces
- Clamping force up to 2,000 N
- Easy-to-move trapezoidal thread spindle with swivelling pressure plate
- Quick-release shift button to quickly adjust sliding bar

First of its kind in the world

For further information
www.bessey.de



BESSEY Tool GmbH & Co. KG ■ Mühlwiesenstraße 40
74321 Bietigheim-Bissingen, Germany
Fon +49 7142 401-0 ■ Fax +49 7142 401-452
E-Mail: info@bessey.de ■ www.bessey.de

Your dealer: