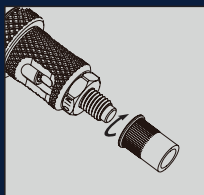
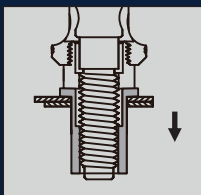


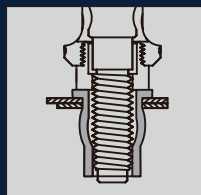
Effect on Nutsert



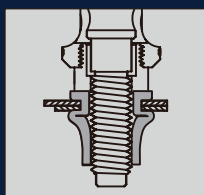
1. Screw nutsert onto mandrel



2. Place the nutsert in a pre-drilled hole



3. Nutsert starts to deform as handles are closed



4. Nutsert is set and has a tight grip on the hole sides and the rear of the work



5. The work can be fastened

Quality Guarantee

This product is guaranteed against defective materials and workmanship.

Your statutory rights are not affected.

Spear & Jackson UK Ltd.

Atlas Way, Atlas North
Sheffield S4 7QQ, England

www.eclipse-tools.co.uk

email: sales@eclipse-tools.com

OVER 100 YEARS
OF EXPERTISE





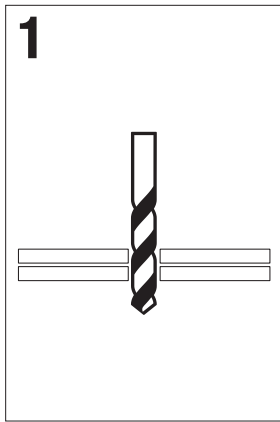
2745C - Compact Threaded
Insert Setting Tool Kit

Operating Instructions

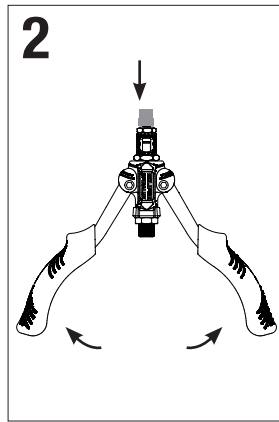
2745C - Compact Threaded Insert Setting Tool Kit

Operating Instructions

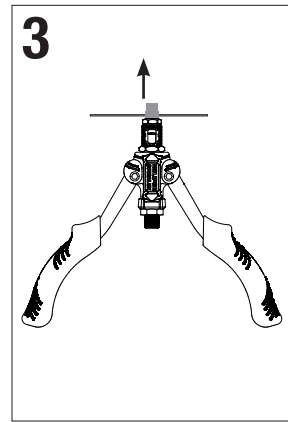
The Eclipse Compact Threaded Insert Setting Tool Kit has been designed to enable thin sheet nutserts to be placed quickly and easily by hand. It is invaluable to Plant and Maintenance Engineers, and also for DIY for simple assembly of threaded inserts or anchor nuts.



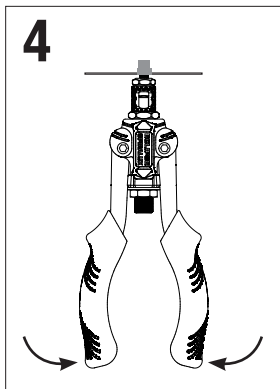
1
Pre-drill appropriate size hole in the material to be inserted



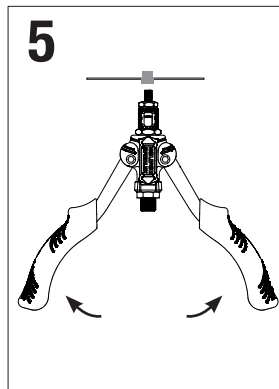
2
Open the handles and fit nutsert onto mandrel



3
Insert tool into pre-drilled hole









4
Close the handles to set nut in position



5
Open the handles and turn the knob clockwise to unload the insert tool from the inserted nut

*Typical drill hole sizes

Mandrel Sizes	Drill Sizes
 M3	5 mm
 M4	6 mm
 M5	7 mm
 M6	9 mm
 M8	11 mm
 M10	13 mm

*Check with nutsert supplier for appropriate hole size.

Changing the Mandrel

- The mandrel can be changed without removing the sleeve by pushing back the sheath and unscrewing from the housing for easy changing of mandrel size
- The multi-functional spanner can be used to remove the nut piece and the sleeve if necessary.

