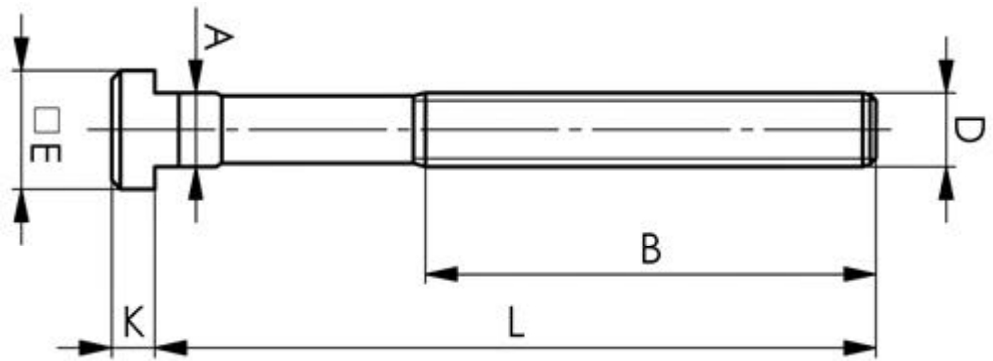


EA637FA-FK Tスロットボルト

Tスロット溝に差し込んで御利用下さい。



品番	D x Slot x L	A	B	E	K	[g]	品番	D x Slot x L	A	B	E	K	[g]
EA637 FA -40	M10x10x40	9.7	30	15	6	30	EA637 FF -63	M16x18x63	17.7	45	28	10	160
EA637 FA -63	M10x10x63	9.7	45	15	6	50	EA637 FF -80	M16x18x80	17.7	55	28	10	185
EA637 FA -80	M10x10x80	9.7	50	15	6	60	EA637 FF -100	M16x18x100	17.7	65	28	10	203
EA637 FA -100	M10x10x100	9.7	60	15	6	70	EA637 FF -125	M16x18x125	17.7	85	28	10	245
EA637 FB -50	(M12x12x50)	11.7	33	18	7	60	EA637 FF -160	M16x18x160	17.7	100	28	10	280
EA637 FB -63	M12x12x63	11.7	40	18	7	65	EA637 FF -200	M16x18x200	17.7	125	28	10	330
EA637 FB -80	M12x12x80	11.7	55	18	7	75	EA637 FF -250	M16x18x250	17.7	150	28	10	430
EA637 FB -100	M12x12x100	11.7	65	18	7	90	EA637 FG -80	(M20x20x80)	19.7	55	32	12	290
EA637 FB -125	M12x12x125	11.7	75	18	7	110	EA637 FG -100	(M20x20x100)	19.7	65	32	12	340
EA637 FB -160	M12x12x160	11.7	100	18	7	135	EA637 FG -125	(M20x20x125)	19.7	85	32	12	390
EA637 FB -200	M12x12x200	11.7	120	18	7	160	EA637 FG -160	(M20x20x160)	19.7	110	32	12	470
EA637 FC -50	(M12x14x50)	13.7	33	22	8	70	EA637 FG -200	(M20x20x200)	19.7	125	32	12	550
EA637 FC -63	M12x14x63	13.7	45	22	8	80	EA637 FG -250	(M20x20x250)	19.7	150	32	12	670
EA637 FC -80	M12x14x80	13.7	55	22	8	100	EA637 FG -315	(M20x20x315)	19.7	190	32	12	800
EA637 FC -100	M12x14x100	13.7	65	22	8	110	EA637 FH -80	M20x22x80	21.7	55	35	14	330
EA637 FC -125	M12x14x125	13.7	75	22	8	120	EA637 FH -100	M20x22x100	21.7	65	35	14	370
EA637 FC -160	M12x14x160	13.7	100	22	8	150	EA637 FH -125	M20x22x125	21.7	85	35	14	428
EA637 FC -200	M12x14x200	13.7	120	22	8	180	EA637 FH -160	M20x22x160	21.7	110	35	14	500
EA637 FD -63	M14x16x63	15.7	45	25	9	115	EA637 FH -200	M20x22x200	21.7	125	35	14	570
EA637 FD -80	M14x16x80	15.7	55	25	9	130	EA637 FH -250	M20x22x250	21.7	150	35	14	680
EA637 FD -100	M14x16x100	15.7	65	25	9	150	EA637 FH -315	M20x22x315	21.7	190	35	14	820
EA637 FD -125	M14x16x125	15.7	75	25	9	180	EA637 FJ -100	(M24x24x100)	23.7	70	40	16	540
EA637 FD -160	M14x16x160	15.7	100	25	9	220	EA637 FJ -125	(M24x24x125)	23.7	85	40	16	600
EA637 FD -250	M14x16x250	15.7	150	25	9	300	EA637 FJ -160	(M24x24x160)	23.7	110	40	16	770
EA637 FE -63	(M16x16x63)	15.7	45	25	9	140	EA637 FJ -200	(M24x24x200)	23.7	125	40	16	900
EA637 FE -80	(M16x16x80)	15.7	55	25	9	160	EA637 FJ -250	(M24x24x250)	23.7	150	40	16	960
EA637 FE -100	(M16x16x100)	15.7	65	25	9	180	EA637 FJ -315	(M24x24x315)	23.7	190	40	16	1270
EA637 FE -125	(M16x16x125)	15.7	85	25	9	225	EA637 FJ -400	(M24x24x400)	23.7	240	40	16	1410
EA637 FE -160	(M16x16x160)	15.7	100	25	9	270	EA637 FK -100	M24x28x100	27.7	70	44	18	650
EA637 FE -200	(M16x16x200)	15.7	125	25	9	315	EA637 FK -125	M24x28x125	27.7	85	44	18	720
EA637 FE -250	(M16x16x250)	15.7	150	25	9	380	EA637 FK -160	M24x28x160	27.7	110	44	18	800
							EA637 FK -200	M24x28x200	27.7	125	44	18	950
							EA637 FK -250	M24x28x250	27.7	150	44	18	1120
							EA637 FK -315	M24x28x315	27.7	190	44	18	1350
							EA637 FK -400	M24x28x400	27.7	240	44	18	1490