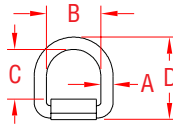
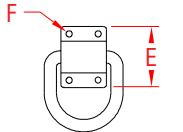


LASHING RING - "BOLT-ON"

316 STAINLESS STEEL



ITEM

A

B

C

D

E

F

BOLT WLL

WT

(size)

(diameter) (lb) (lb)

EA638BT-34

1/2"

2.35"

2.14"

3.56"

2.63"

0.34"

5/16"

3,000

1.18

EA638BT-35

5/8"

2.94"

2.61"

4.42"

2.75"

0.41"

3/8"

4,500

2.25

EA638BT-36

3/4"

2.98"

2.58"

4.56"

3.19"

0.41"

3/8"

6,500

3.00

EA638BT-37

1"

3.00"

2.52"

5.17"

4.25"

0.53"

1/2"

8,500

5.18

NOTE:

HEAVY DUTY LASHING RING IS DESIGNED FOR DEMANDING TIE-DOWN APPLICATIONS. "D" RING IS FORGED 316 STAINLESS STEEL AND FOLDS FLUSH WHEN NOT IN USE. FEATURES BOLT-ON MOUNTING PLATE. IDEAL FOR CARGO APPLICATIONS SUCH AS OVERSEAS CONTAINER SHIPMENTS OR LONG DISTANCE HAULING IN EXPOSED ELEMENTS.

FORGED