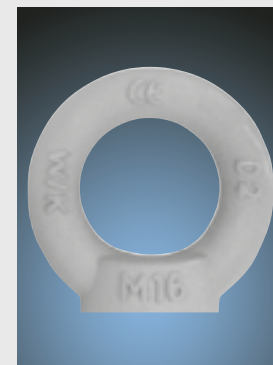
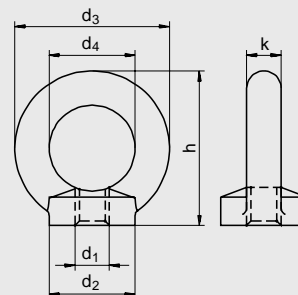


WK-Ringmuttern - C15

Galv. verzinkt

Werkstoff: C15

Prägung: WK / Abmessung / WLL / C15 / CE / Charge



WK-Eye nuts - C15

Galvanized

Material: C15

Stamping: WK / size / WLL / C15 / CE / charge

Galv. verzinkt Galvanized

Artikel-Nr.	WLL in geradem Zug	d_1	d_2	d_3	d_4	h	k	Gewicht per 100 Stk.	Stück pro VPE	
Article-No.	WLL in straight pull							Weight per 100 pcs.	Units per bag	
	[t]	[mm]	[mm]	[mm]	[mm]	[mm]	[mm]	[kg]		
EA638SS-1	67000061	0,08	M 6	20	36	20	36	8	4,8	50
EA638SS-2	67000081	0,14	M 8	20	36	20	36	8	5,0	50
EA638SS-3	67000101	0,23	M 10	25	45	25	45	10	9,0	50
EA638SS-4	67000121	0,34	M 12	30	54	30	53	12	16,0	25
EA638SS-5	67000161	0,70	M 16	35	63	35	62	14	24,0	25
EA638SS-6	67000201	1,20	M 20	40	72	40	71	16	36,0	10
EA638SS-7	67000241	1,80	M 24	50	90	50	90	20	72,0	1
EA638SS-8	67000301	3,20	M 30	65	108	60	109	24	132,0	1
EA638SS-9	67000361	4,60	M 36	75	126	70	128	28	208,0	1