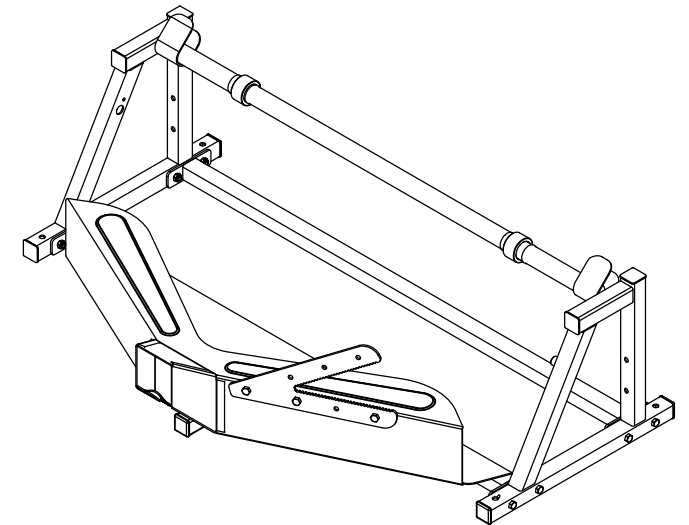
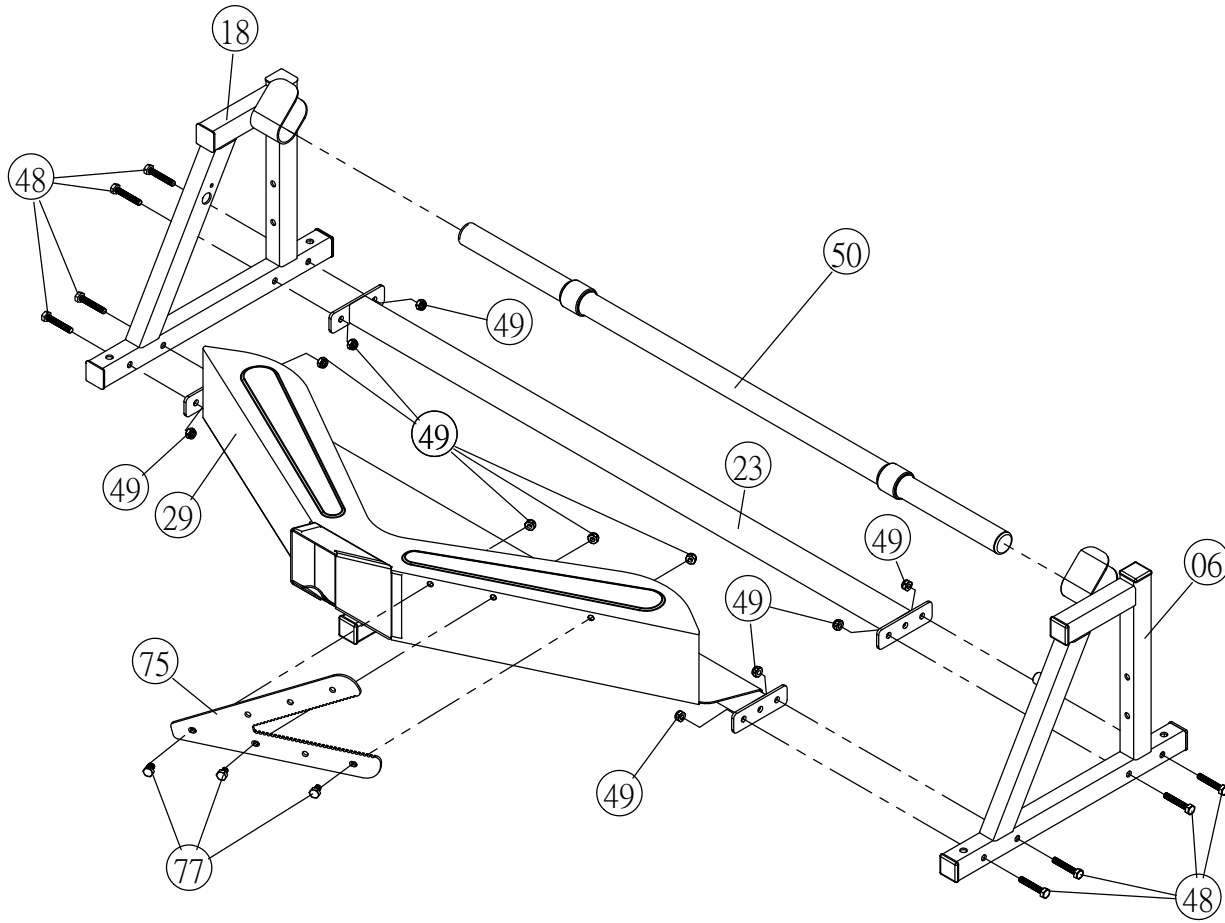


Paper Crumpler

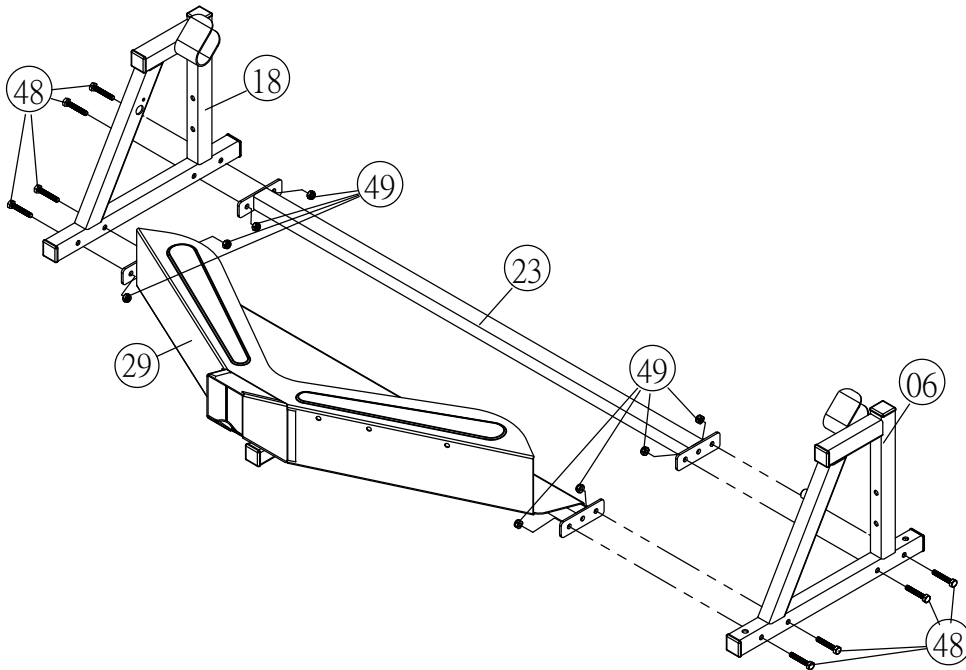
Part No.	Part Name	QTY
06	Right Frame Assembly	1
18	Left Frame Assmby	1
23	Bridge Assembly	1
29	Chute	1
48	Screw	8
49	Nylon Nut	11
50	Support Tube	1
75	Cutter	1
77	Screw	3



Paper Crumpler

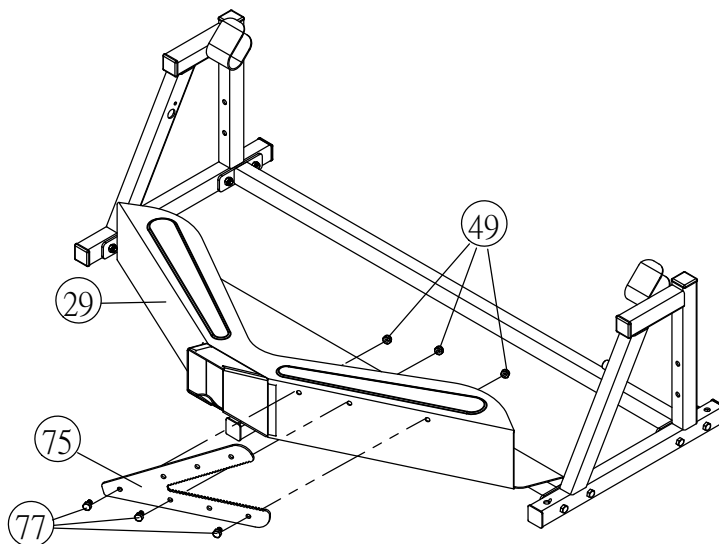
ASSEMBLING INSTRUCTIONS

1



Install (29) chute and (23) bridge assembly to (18) left frame assembly and (06) right frame assembly with (48) screws and (49) nylon nuts.

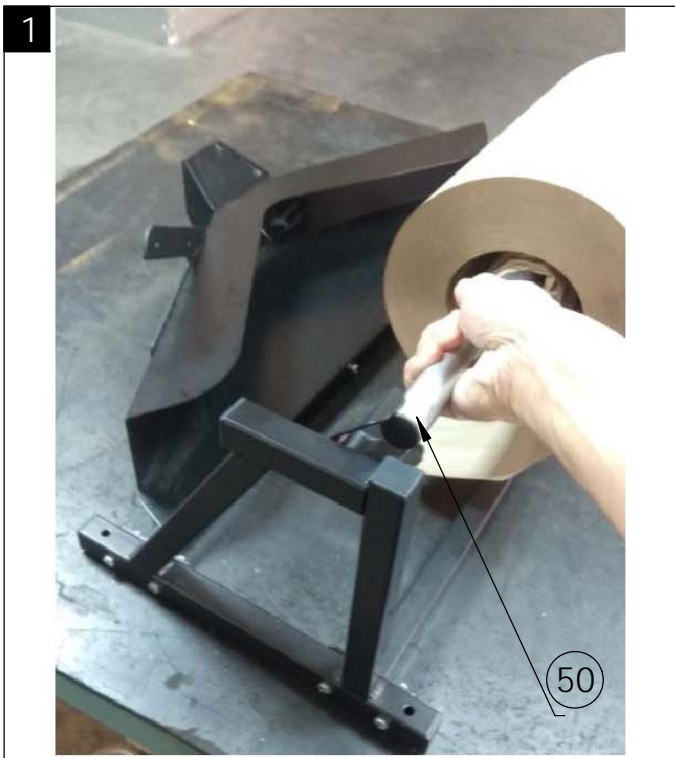
2



Fasten (75) cutter to (29) chute with (77) screws and (49) nylon nuts.

Paper Crumpler

OPERATING INSTRUCTIONS



Insert (50) support tube into core of paper roll. Position the paper roll to the dispenser as shown.



Feed paper under the paper roll. Also feed paper through (29) chute.



Use (75) cutter to cut paper.