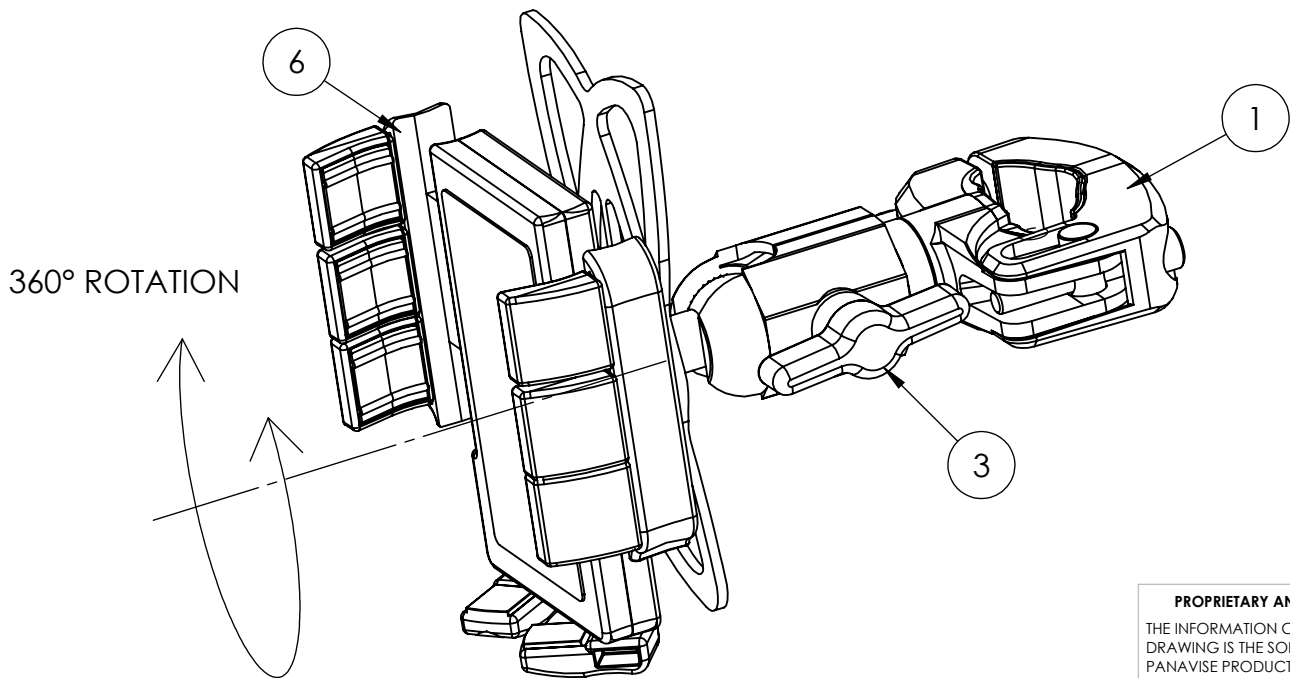
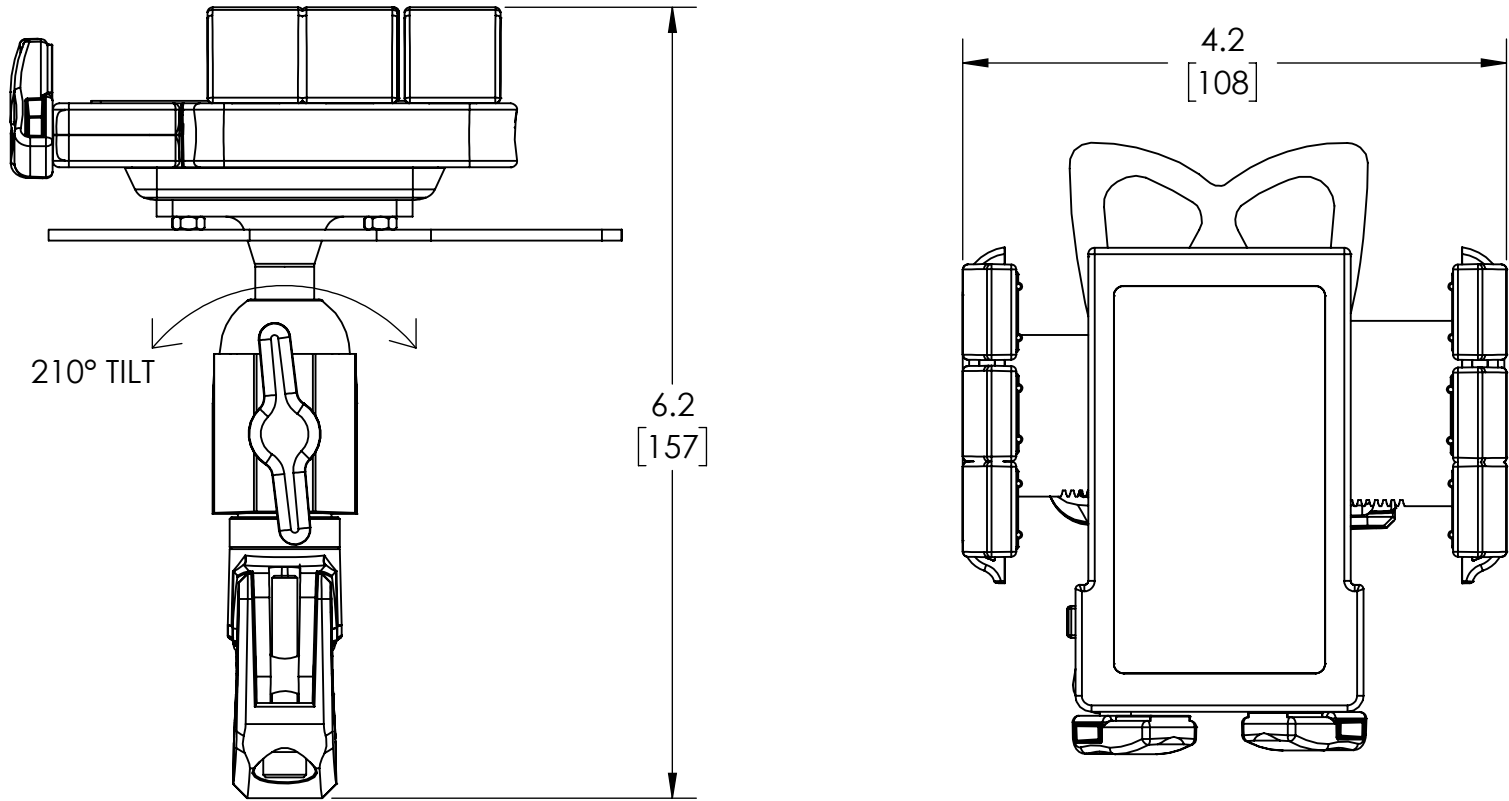


ALL DIMENSIONS ARE FOR REFERENCE ONLY

DIMENSIONS ARE IN INCHES [MILLIMETERS]  
UNLESS OTHERWISE NOTED



**PROPRIETARY AND CONFIDENTIAL**  
THE INFORMATION CONTAINED IN THIS  
DRAWING IS THE SOLE PROPERTY OF  
PANAVISE PRODUCTS INC.. ANY  
REPRODUCTION IN PART OR AS A WHOLE  
WITHOUT THE WRITTEN PERMISSION OF  
PANAVISE PRODUCTS INC IS  
PROHIBITED.

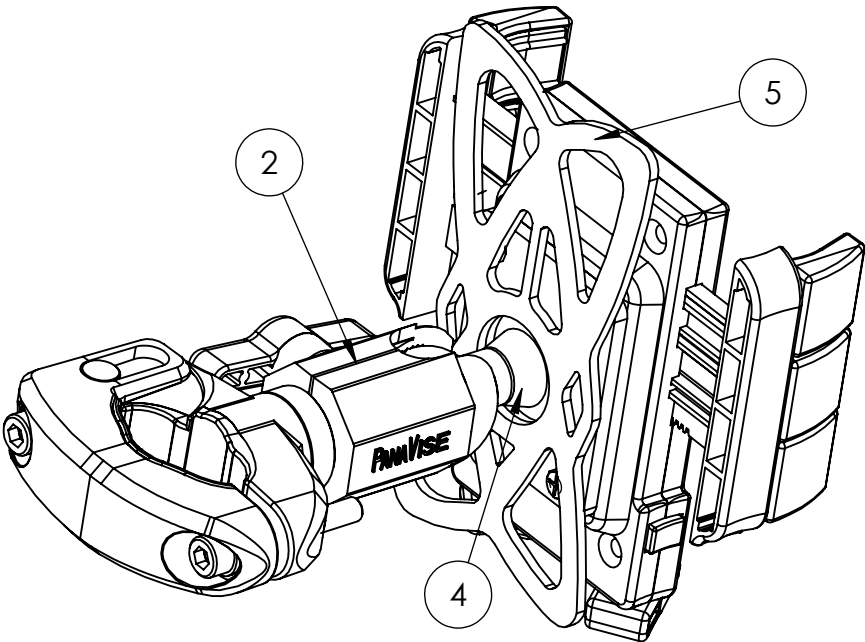
REVISIONS				
ZONE	REV.	DESCRIPTION	DATE	APPROVED
	A	INITIAL RELEASE	ND 4/9/2021	JRM 4/13/2021


SPECIFICATIONS

- OVERALL LENGTH ... 6.2 [157]  
SHIPPING WEIGHT ... 0.9 POUNDS [0.4 KG]  
COLOR ..... BLACK
- MATERIAL:
- 1. BARGRIP ASSEMBLY ..... NYLON COMPOSITE - BLACK
  - 2. KNUCKLE ASSEMBLY ..... ALUMINUM - BLACK
  - 3. KNUCKLE KNOB ..... NYLON COMPOSITE - BLACK
  - 4. AMPS BALL ..... NYLON COMPOSITE - BLACK
  - 5. SAFETY TETHER ..... RUBBER - BLACK
  - 6. PORTAGRIP ASSEMBLY ..... NYLON COMPOSITE - BLACK

NOT SHOWN:

- HEX KEY



						 <b>PANAVISE®</b> 7540 Colbert Drive, Reno, Nevada 89511-1225 Phone (775) 850-2900 Fax (775) 850-2929	
		UNLESS OTHERWISE SPECIFIED:  DIMENSIONS ARE IN INCHES TOLERANCES: FRACTIONAL± 1/64 ANGULAR: MACH±1/2° BEND ± TWO PLACE DECIMAL: ±.01 THREE PLACE DECIMAL: ±.005	DRAWN	ND	9APR21		TITLE:  PORTAGRIP W/ HANDLEBAR MOUNT SPEC SHEET
			CHECKED				
			ENG APPR.				
			MFG APPR.				
		INTERPRET GEOMETRIC TOLERANCING PER: ASME 14.5M -2009	Q.A.			SIZE DWG. NO. REV <b>B</b> 13225-SP <b>A</b>	
		MATERIAL SEE NOTES	COMMENTS:				SCALE: 1:2 WEIGHT: SHEET 1 OF 1
NEXT ASSY	USED ON	FINISH SEE NOTES					
APPLICATION		DO NOT SCALE DRAWING					