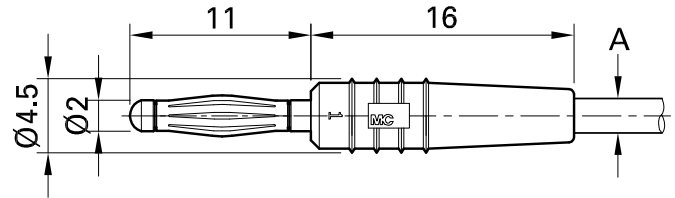
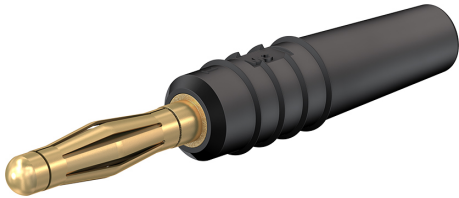


# SLS205-L



Item number 22.2618-\*

In-line, Ø 2 mm with spring-loaded MULTILAM for self-assembly of test leads. Solder connection.

Technical data	
Diameter of plug system	2 mm
Rated Values	30 V, 10 A / 60 V, 10 A
Surface treatment electrical contact	Au
Base material electrical contact	CuZn
Standard color(s) *	<span style="background-color: black; color: white; padding: 2px;">21</span> <span style="background-color: red; color: white; padding: 2px;">22</span> <span style="background-color: blue; color: white; padding: 2px;">23</span> <span style="background-color: yellow; color: black; padding: 2px;">24</span> <span style="background-color: green; color: white; padding: 2px;">25</span> <span style="background-color: purple; color: white; padding: 2px;">26</span> <span style="background-color: orange; color: white; padding: 2px;">27</span> <span style="background-color: gray; color: white; padding: 2px;">28</span> <span style="border: 1px solid black; padding: 2px;">29</span>
Test accessory acc. to	IEC EN 61010-031
Component parts	KT2-S; LS205-L