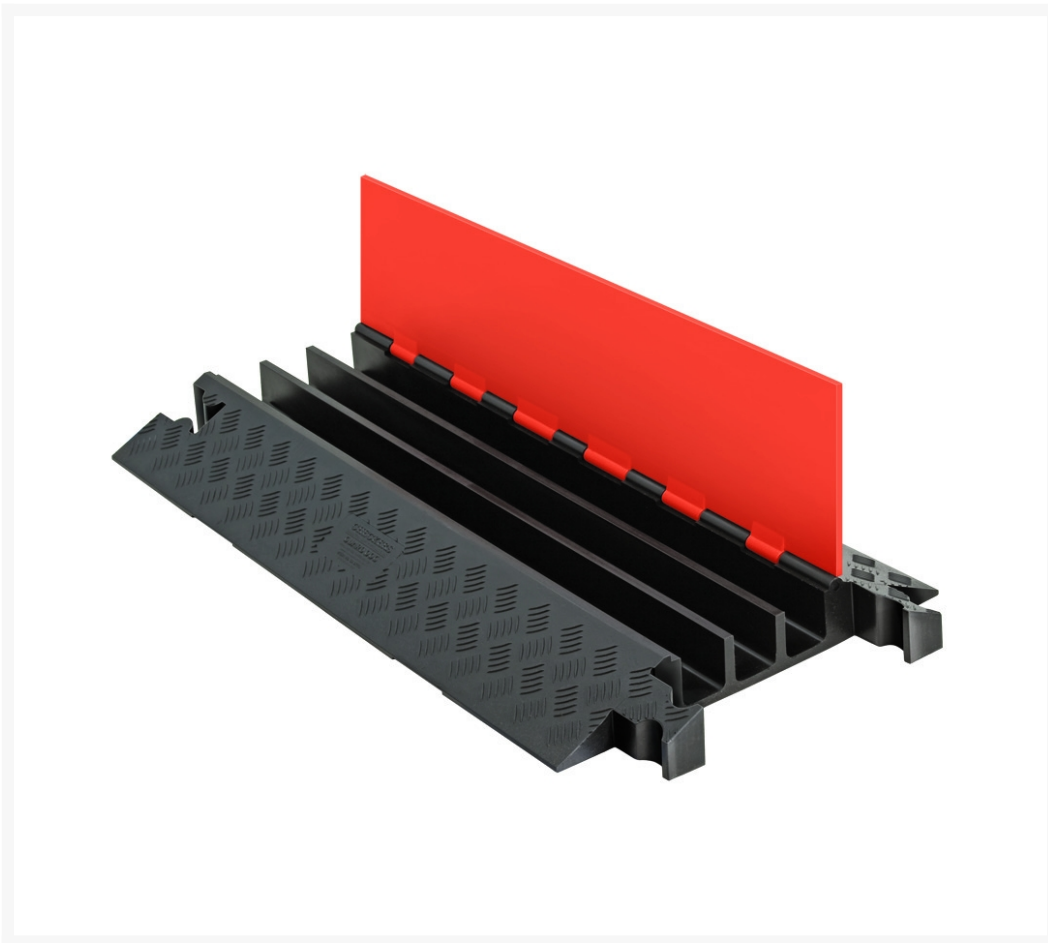


3-Channel Guard Dog® Cable Protector for 2.25" Lines, Orange Lid/Black Base - GD3X225-O/B

Product Images



Short Description

- Protects Cables and Hoses Up to 2.25" Outside Dia.
- Dog-Bone® Connectors to Extend to Any Desired Length
- Reinforced Hinged Lid for Easy Cable Placement
- All-Weather Polyurethane Construction
- Patented 5-Bar Tread Surface for Maximum Traction
- Modular Interlocking Design for Easy Setup

- Ideal for Use in: amusement parks, entertainment venues, sporting events, and most public, commercial, industrial, construction, and utility applications
- Custom cable protectors are available. [Get a quote here.](#)

Description

Whether you operate an amusement park, an industrial site, a construction firm or an entertainment venue, at some point you'll need a means of protecting electrical cables and hose lines. Built from all-weather polyurethane, Guard Dog 3-Channel Cable Protectors can be used with cables up to 2.25 inches in outside diameter. Thanks to a patented 5-bar tread surface, you can ensure maximum traction for both vehicles and pedestrians, while a reinforced hinge lid ensures easy cable placement.

Custom cable protectors can be made with different colors and embossed logos. [Get a quote](#) with your specific requirements.

Better yet, the modular, interlocking design ensures easy setup, while Dog Bone connectors allow you to extend your protector to whatever length you require.

Specifications

Model No	GD3X225-O/B
UPC	812958004210
Color	Orange Lid / Black Base
Quantity Included	1
Pallet Quantity	40
Load Capacity Per Axle	28420 lbs
Length (Inches)	38.88
Width (Inches)	19.75
Height (Inches)	3
Max Cable Outside Diameter (Inches)	2.25 in.
Number of Channels	3-Channels
Connector Type	Dog Bone Connector
Channel Width	2.25