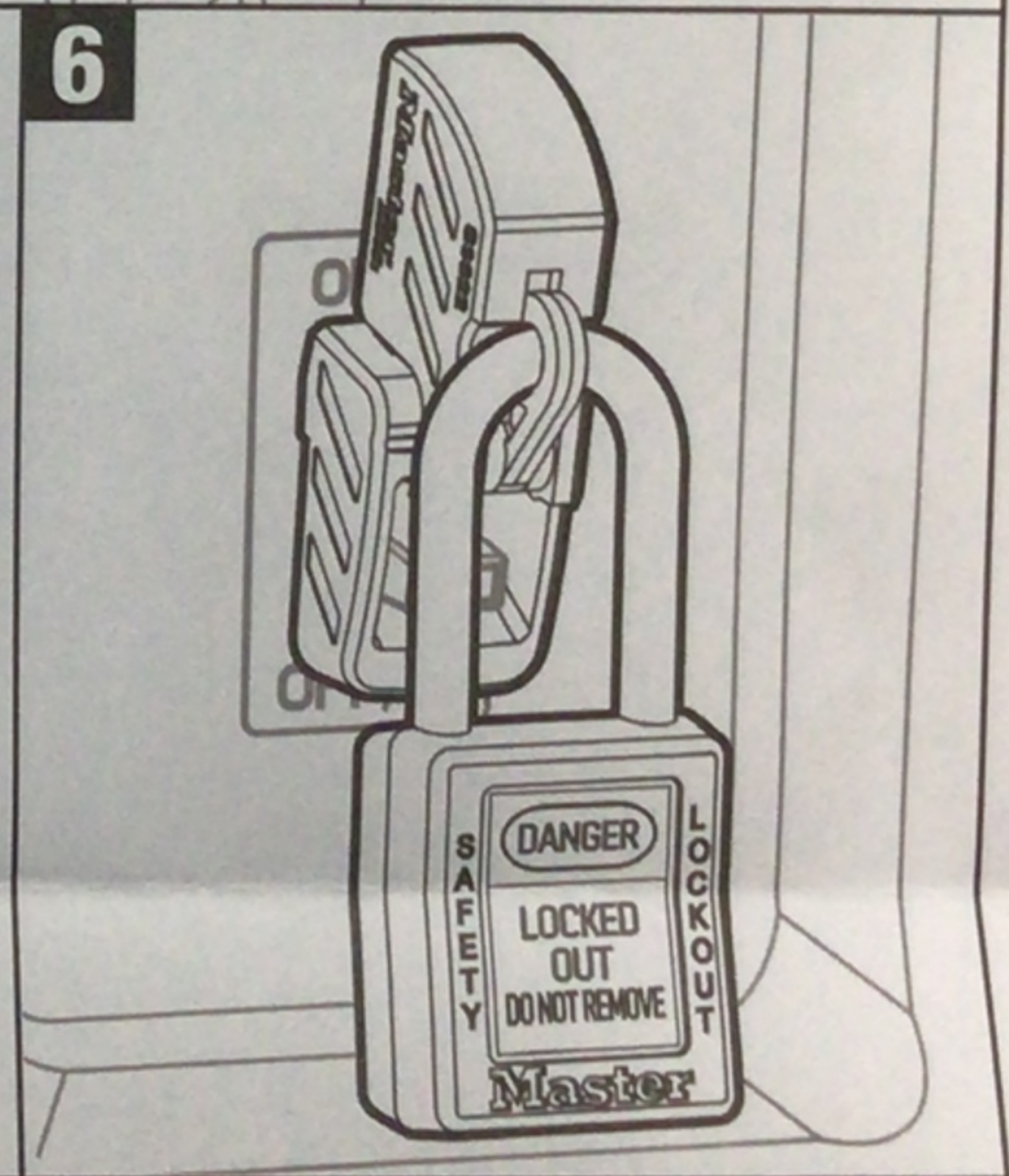
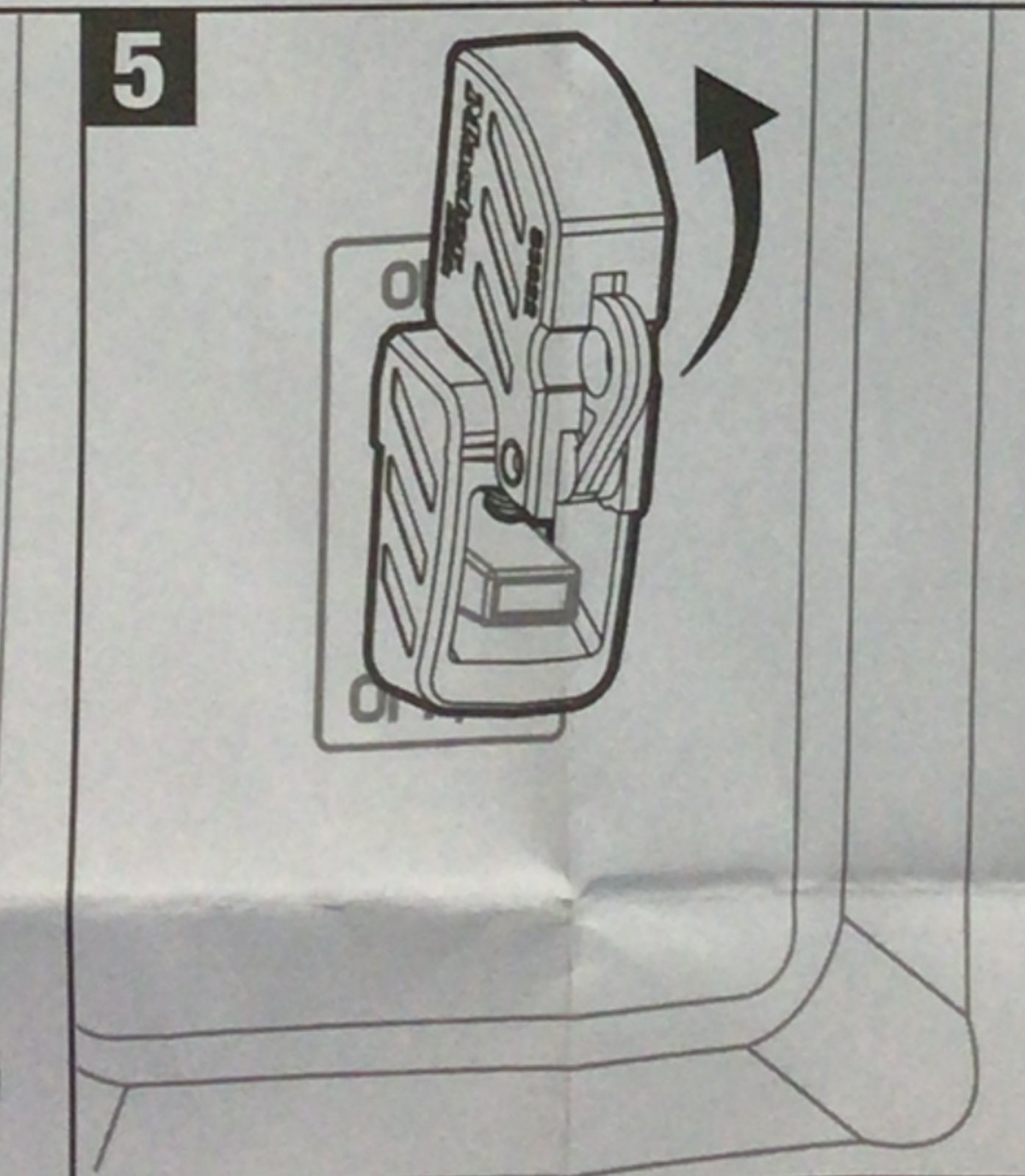
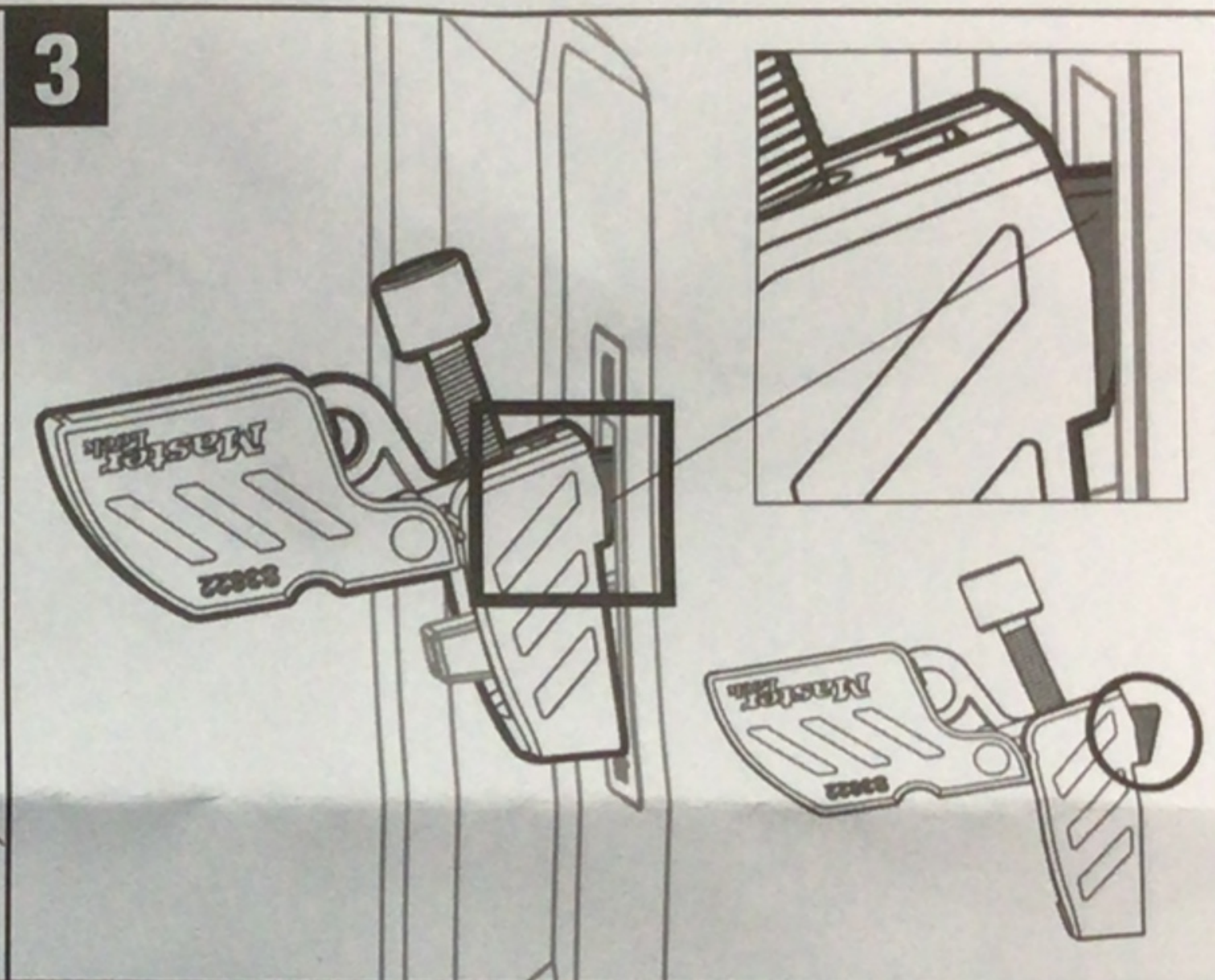
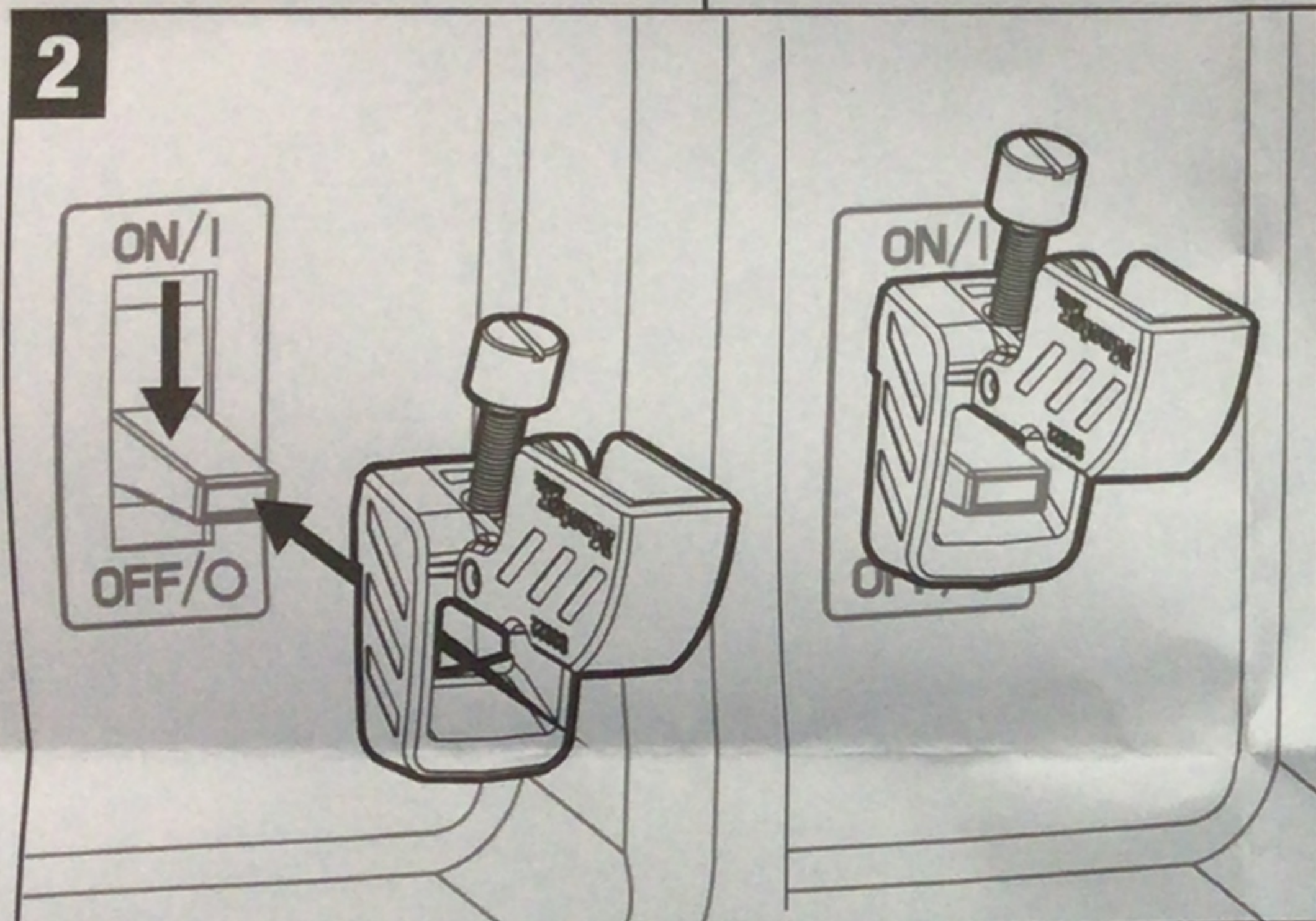
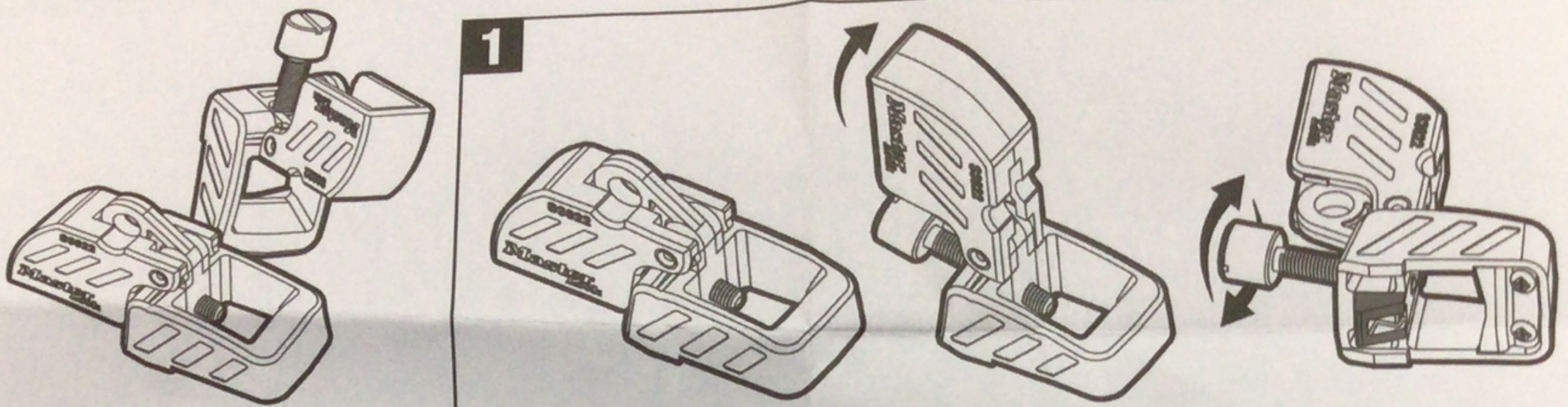


S3822

Master Lock.



For breaker application information, please visit masterlock.com/business-use/product/S3822

Pour obtenir plus d'informations sur l'utilisation du disjoncteur, veuillez vous rendre sur masterlock.com/business-use/product/S3822

Para obtener información sobre la aplicación del interruptor, visite masterlock.com/business-use/product/S3822

www.masterlocksafety.com • www.masterlock.com

© 2019 Master Lock Company LLC | All Rights Reserved
Master Lock Company LLC, Milwaukee, WI 53210 U.S.A. | 800-308-9244
Master Lock Canada Inc., Mississauga, Ontario L5L 5Z9 | (800) 227-9599 | Fax: (800) 229-0081
Master Lock Europe, 10 Avenue de l'Arche - Le Colisée Gardens, 92 400 Courbevoie, France, 00 33 1 41 43 72 00, E-mail: safety@master-lock.fr
Master Lock Europe-UK Office, Wakes Colne, Colchester CO6 2DB, UK, 0044.1.787.222.027, E-mail: safetyeu@mlock.com
Unit 2205-2208, 22/F., Millennium City 2, 378 Kwun Tong Road | Kowloon, Hong Kong 400-820-6535 E-mail: safetychina@mlock.com
マスターロック・セントリー日本株式会社 141-0022 東京都品川区東五反田 2-20-4 NMF高輪ビル 4F 03-5447-5311 E-mail: ML_web@mlsj.jp