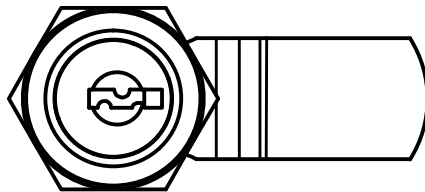


© 2011 Moss Plastic Parts Ltd. All rights reserved.
 Registered in England, Company No. 547495.
 Registered Office: Avebury House,
 201-249 Avebury Boulevard, Milton Keynes, MK9 1AU

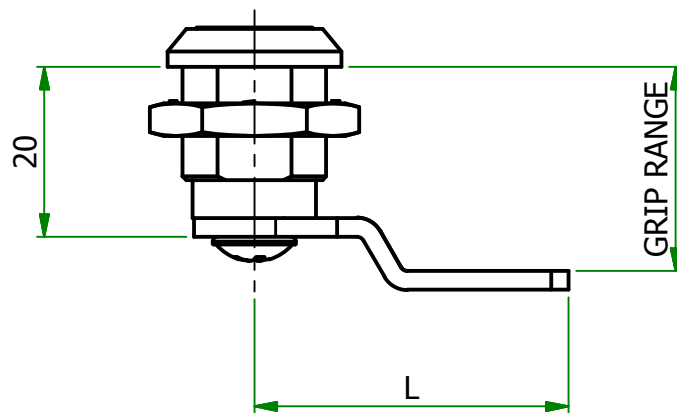
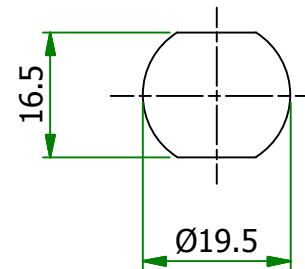
Condition of Sale can be found on our website:
mossexpress.com. Moss Express is a trading name of Moss Plastic Parts Ltd.

Moss Plastic Parts Ltd does not warrant that the files will be error free and may create new versions ("Upgrades") at any time, which may correct such errors. Moss Plastic Parts Ltd has no obligation to notify you of such upgrades. Any upgraded file will be published to the website, when it becomes available.

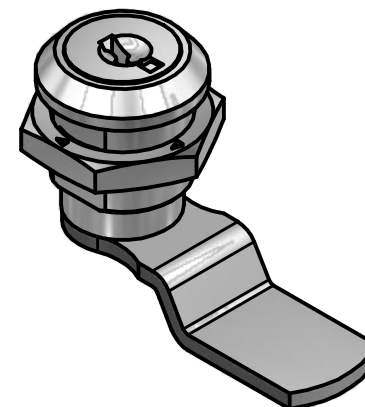
You are not permitted to load any of the files on to a network server for the purposes of distribution to one or more other computer(s) on that network or to effect such distribution. Moss Plastic Parts Ltd shall not be liable for any loss or damage whatsoever or however caused, arising directly or indirectly from the use of the files.



FIXING HOLE



ITEM	L	GRIP RANGE	KEY TYPE
491839	20	33	DIFFERENT



UNLESS OTHERWISE STATED

ALL DIMENSIONS IN mm				DO NOT SCALE	
LINEAR TOLERANCE				THIRD ANGLE PROJECTION	
SIZE	(0)	(0.0)	(0.00)		
0-10mm	±0.5	±0.15	±0.10		
10-30mm	±0.5	±0.20	±0.15		
30-50mm	±0.5	±0.30	±0.20		
50-100mm	±0.8	±0.50	±0.25		
100-200mm	±1.5	±0.80	±0.40		
200-300mm	±2.0	±1.20	±0.80		
300-500mm	±3.0	±2.00	±1.00	ANGULAR TOLERANCE ±0.5 DEGREES UNSPECIFIED RADII 0.25mm DRAFT ANGLE 0.5 DEGREES	
+500mm	±5.0	±3.00	±1.50		
ORG.SCALE	1:1				

MATERIAL	ZINC ALLOY	
ITEM No.	491839	
TITLE	LARGE CHROME CAM LOCKS	
DWG.No.	SR5541	ISSUE No. 1

UNCONTROLLED