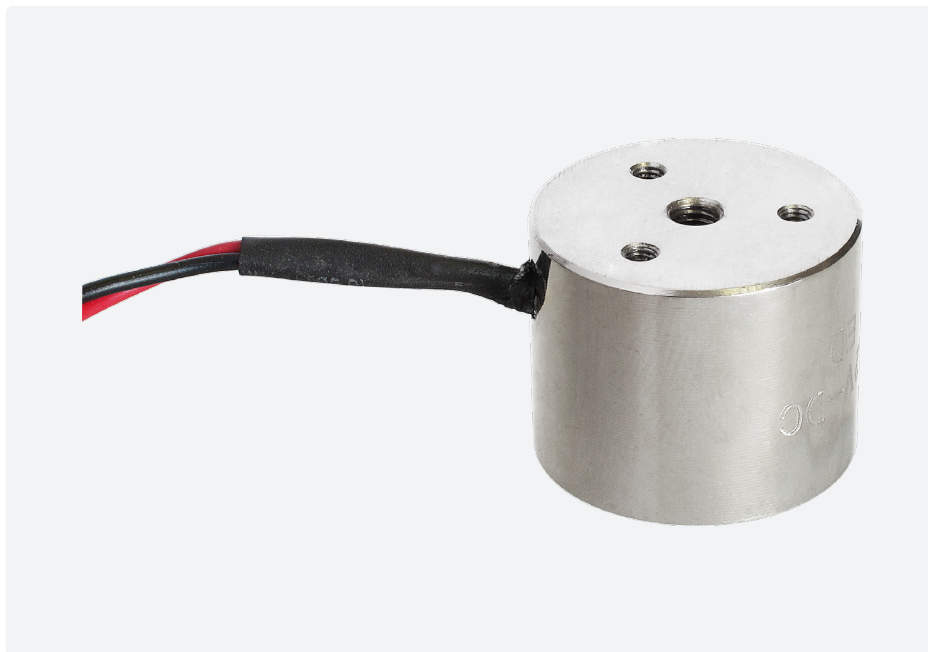


# Electro-Holding Magnet: 30mm

## Energise To Hold

### Technical Data

Mountings	Threaded holes in rear face
Finish	Bright nickel-plated with machined face
Weight	108g
Typical Holding Force	280N
ED Rating	100%
IP Rating	54
Standard Operating Voltage	12VDC M52173/12VDC 24VDC M52173/24VDC
Current	12V - 280mA 24V - 140mA
Typical Power	3.3W
Connection Type	12VDC & 24VDC Free Leads (500mm Long)

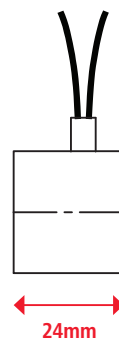


### Recommended Armature Plate

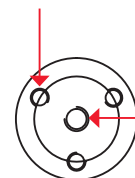
Finish	Bright nickel-plated
Diameter	30mm
Height	4mm
Screw	M4
Part Number	M52171/30ARM
Weight	30g



Leads:  
1 Red & 1 Black  
0.3mm Square  
500mm Long

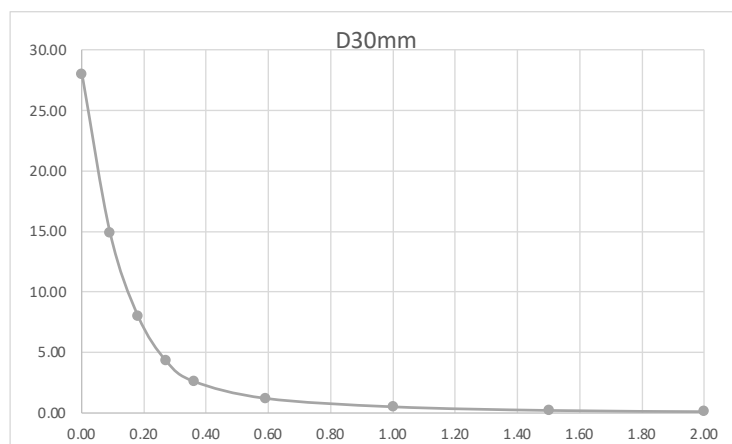


3 Holes Tapped M3  
Coarse x 5mm Deep  
on 18mm P.C.D



Tapped M5 Coarse  
x 10mm Deep

Air Gap (mm)	Pull Force* (N)
0.00	280
0.09	149
0.18	80
0.27	43
0.36	26
0.59	12
1.00	5
1.59	2
2.00	2



\* +/- 10% at room temperature

To achieve the optimum pull force 100% contact area must be achieved using the recommended armature plate. The force will be affected if other material specifications, thicknesses and surfaces are used, or if the armature fails to make positive contact over the full diameter of the face of the magnet.

Where misalignment is likely to be an issue we recommend that an oversized armature plate is used to ensure 100% full contact, this however will reduce the stated pull force by approximately 10%.