



Instruction Manual

Manual Furniture Movers

Part Number: 272951



Note: Operator MUST read and understand these operating instructions before using these Manual Furniture Movers.

1. GENERAL INFORMATION

1.1 DESCRIPTION

Thank you for purchasing a Manual Furniture Mover. This mover has been designed for lifting and moving wooden furniture. It features side supports lined with felt and rubber topped platforms to prevent damage to the furniture.

1.2 SPECIFICATIONS

Part Number	272951
Model	MFM
Capacity	1,320 lbs
Lift Plate L x D	8.5" x 4.5"
Lift Height	12"
Casters	6" Moldon Polyurethane
Weight	72 lbs

Materials and specifications are subject to change without notice.

ATTENTION: TO INSURE SAFE AND EASY USE OF YOUR MANUAL FURNITURE MOVERS, READ THESE INSTRUCTIONS ENTIRELY BEFORE USING.

2. SAFETY INFORMATION

- 1) Do not move the loaded furniture movers on inclines or slopes. The floor must be level, smooth and clean for safe operation.
- 2) Check whether the piece of furniture to be moved contain any loose objects. These will have to be removed, or secured against slipping out of position.
- 3) Make sure the furniture is strong enough for two opposite ends to take the weight of the piece via the unit's platforms. Also confirm the uppers supports of the furniture movers will hold/transport the furniture without damaging it.
- 4) Do not overload the furniture movers. The maximum load is 1,320 lbs per pair, 660 lbs each.
- 5) Never use these units for towing behind a vehicle.

3. MAINTENANCE

The Manual Furniture Movers are low maintenance, however some simple upkeep is recommended to prolong the life of the units.

The spindles and gear wheels must be re-greased weekly, or monthly depending on use, with standard multi-purpose grease. The spindle can be reached using a brush through the slot in the guide rail.

To grease the gear wheels using a brush, the gear-housing lid must be opened with a screwdriver. Before operation the lid must be firmly pressed down to close it. The unit should then be tested before full use.

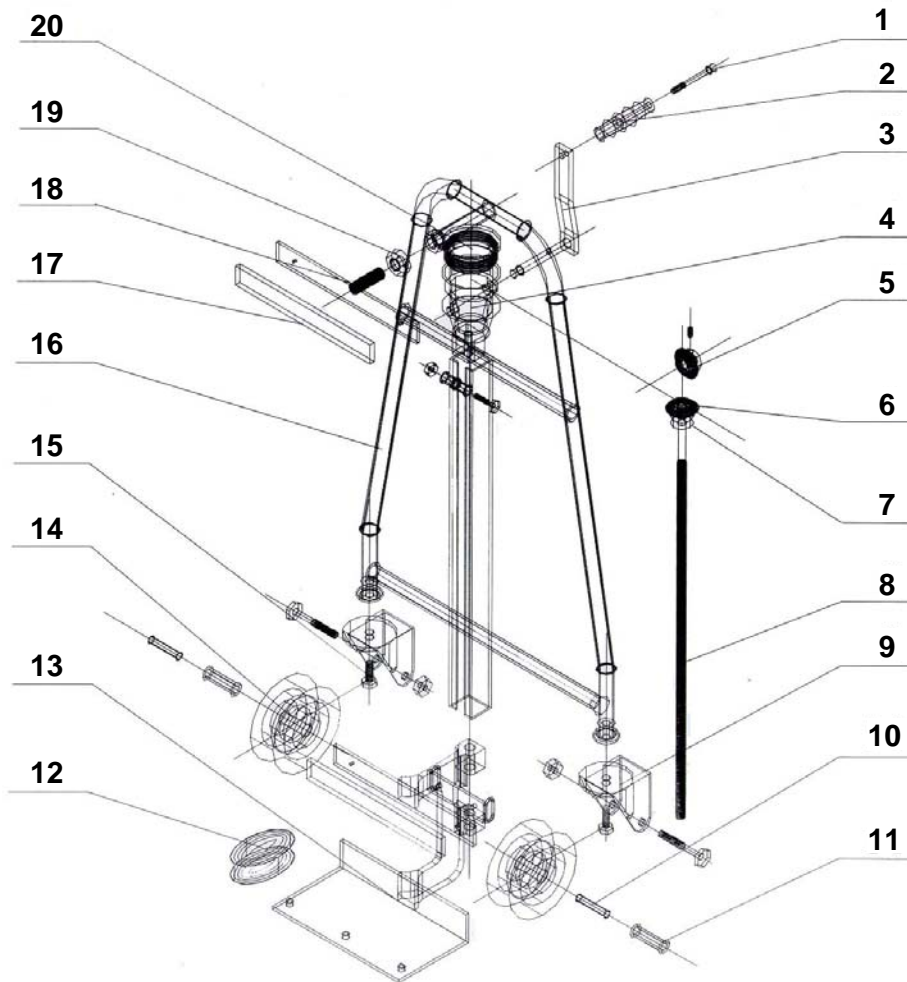
4. OPERATION

- 1) Before transporting furniture, the platforms should be lowered to the floor until the transport units are standing vertically. If the furniture to be transported overhangs at the upper support, this support may be screwed in or out, allowing adjustment until the transport unit is standing level. If this adjustment option is not sufficient, or, when the platforms are lowered the transport unit cannot lean against furniture; these should not be used to transport it.
- 2) Position the platforms of the units under the side faces (narrow sides) of the piece of furniture until the upper and lower supports are resting against it. The centers of the platforms must be beneath the center of gravity of the furniture.
- 3) Place the securing straps in line with the edge protectors at the edges of the furniture. Pull the straps tight so that they will connect both the units and when used correctly, prevent them from slipping out of position. Raise the platforms about ½" and check how firmly the furniture is standing on the platforms.
- 4) Raise both platforms to equal heights, a maximum of 1" only.
- 5) Push the transport units only, when moving furniture to new destination. **Note:** The article being transported must not be left unattended standing on the equipment; it must always be lowered onto the floor.
- 6) Drop down both manual furniture mover platforms carefully upon reaching the new destination for the furniture.
- 7) Release securing straps and slowly pull away manual furniture movers.

ATTENTION: TO INSURE SAFE AND EASY USE OF YOUR MANUAL FURNITURE MOVERS, READ THESE INSTRUCTIONS ENTIRELY BEFORE USING.

6. PART INFORMATION

6.1 FRAME PART DIAGRAM



6.2 FRAME PART LIST

Item	Part Number	Item Description	Qty.
1		Screw	1
2		Hand Grip	1
3		Crank	1
4		Seating	1
5		Drive Gear	1
6		Driven Gear	1
7		Plane Bearing	1
8	172399	Screw Rod	1
9		Wheel Seating	2
10		Inner Housing	2
11		Inner Housing	2

Item	Part Number	Item Description	Qty.
12	172360	Woven Belt	
13	172406	Lifting Platform	1
14	172369	Wheel	2
15		Bolt	2
16		Supporting Base	1
17		Felt	2
18		Supporting Plate	1
19		Nut	1
20	172425	Dust-Proof Cover	1
KIT	272972	Caster Assembly (Includes items #9, 10, 11, 14 & 15)	2