

# Product Data Sheet



## BPA-TPA 50K-FK

**EAN** 4047526567422

**ID** 567420

**Light duty fixed castor with top plate fitting, Wheel with thermoplastic rubber tread, with polypropylene wheel centre**

### Bracket:

Made of pressed steel. Bolted wheel axle. Zinc-plated, blue-passivated, Cr6-free.

### Wheels:

Made of high-quality thermoplastic rubber elastomer (TPE), high operational comfort, low-noise operation, low rolling and swivelling resistance, good floor preservation, chemically bonded for an inseparable connection to the wheel centre.

### Tread/tyre:

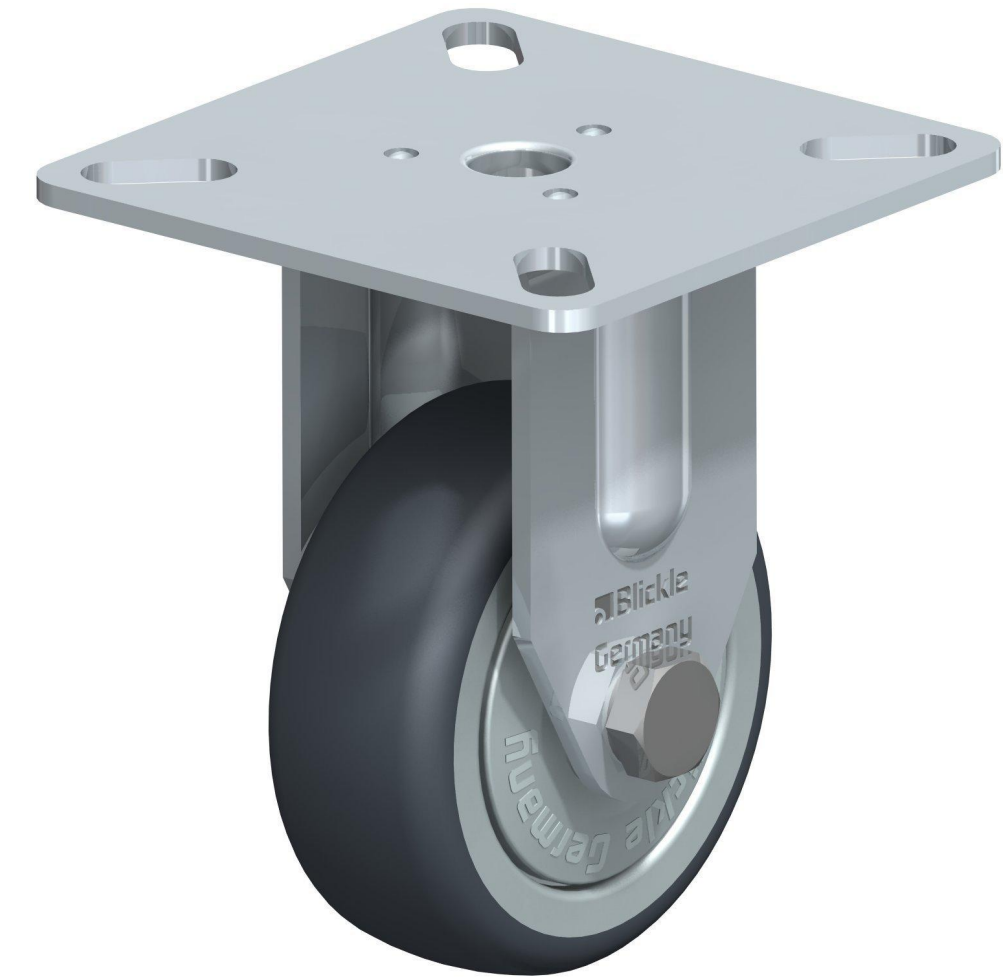
Made of thermoplastic rubber elastomer (TPE), contains traces of oil.

**Tread colours** grey

### Wheel centre/rim:

Made of high-quality, impact-resistant polypropylene. Chemically bonded.

**Wheel centre colour:** grey



### Rolling resistance

■■■■□ Very good

### Operating noise

■■■■□□ Good

### Floor surface preservation

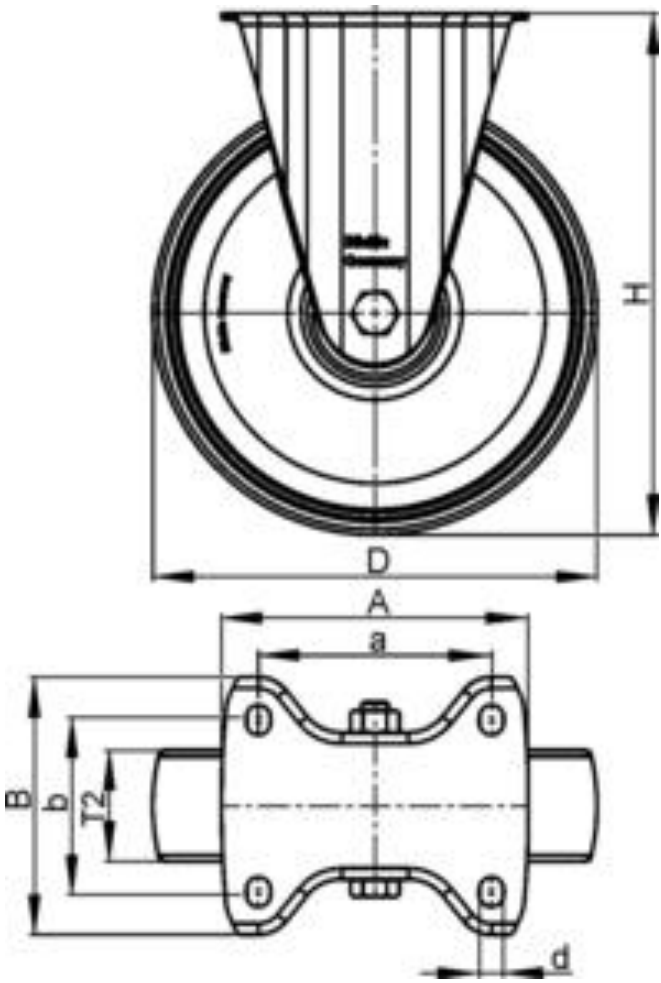
■■■■□□ Good

# Product Data Sheet



## Technical data

Plate size		60 x 60
Bolt hole spacing		38x38/48x48
Bolt hole Ø		6,2
Wheel Ø		50 mm (D)
Wheel width		19 mm (T2)
Load capacity		50 kg
Total height		71 mm (H)
unit weight		0,2 kg
Temperature resistance		-20 ° C
Temperature resistance to		60 ° C
tread and tyre hardness		85° Shore A
Bearing type:		Ball bearing



# Product Data Sheet



## Variants



### **BPA-TPA 50K-ELS-FK**

Light duty fixed castor with top plate fitting, Wheel with thermoplastic rubber tread, with polypropylene wheel centre