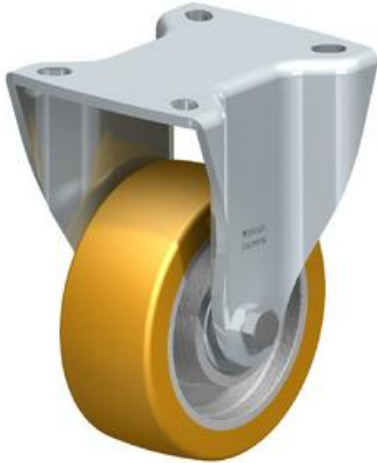


## EA986KF-100



**EAN: 4047526277925**

**ID: 277921**

**Pressed steel fixed castor, heavy duty brackets, with top plate fitting, Heavy duty wheel with Blickle Extrathane® polyurethane tread, with cast iron wheel centre**

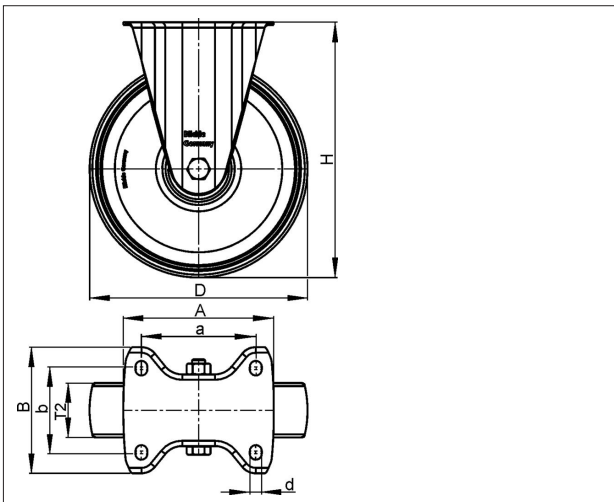
**Bracket:**

Made of pressed steel. Bolted wheel axle. Zinc-plated, blue-passivated, Cr6-free.

**Wheels:**

**Tyre & running tread:** Made of high-quality, reaction-injected polyurethane-elastomer Blickle Extrathane®, low-noise operation, low rolling resistance, good floor preservation, very high abrasion resistance, high cut and tear propagation resistance, very good chemical connection with the wheel centre. Tread colour: light brown

**Rim / wheel centre:** Made of grey cast iron, lacquered. Casted tread.



### Technical data

Wheel Ø (D)	100 mm
Wheel width (T2)	40 mm
Load capacity	400 kg
Total height (H)	140 mm
Unit weight	1.692 kg
Temperature range from	-25 °C
Temperature range to	70 °C
Tread & tyre hardness	92° Shore A
Bearing type	
Plate size (A,B)	100 x 85 mm
Bolt hole Ø (d)	9 mm
Bolt hole spacing (a,b)	80 x 60 mm

Rolling resistance



Operating noise



Floor surface preservation



**Blickle Räder+Rollen GmbH u. Co. KG**

Heinrich-Blickle-Straße 1 · 72348 Rosenfeld · Germany  
Telefon: +49 7428 932-0 · Telefax: +49 7428 932-209  
E-Mail: [info@blickle.com](mailto:info@blickle.com) · Internet: [www.blickle.com](http://www.blickle.com)

© Blickle Räder+Rollen GmbH u. Co. KG 2013  
Rosenfeld · Germany