

Product Data Sheet



BH-GB 200K

EAN 4047526002497

ID 742257

Pressed steel fixed castor, heavy duty brackets, with top plate fitting, Heavy duty wheel with Blickle Besthane® polyurethane tread, with cast iron wheel centre

Bracket:

Made of pressed steel. Bolted wheel axle. Zinc-plated, blue-passivated, Cr6-free.

Wheels:

Made of high-quality, reaction-injected polyurethane-elastomer Blickle Besthane®, low-noise operation, very low rolling resistance, high dynamic load capacity, good floor preservation, very high abrasion resistance, high cut and tear propagation resistance, very good chemical connection with the wheel centre.

Tread/tyre:

Made of high-quality polyurethane-elastomer Blickle Besthane®, high dynamic load capacity.

Tread colours brown

Wheel centre/rim: Made of steel. Casted tread.

Wheel centre colour: silver



Rolling resistance

■■■■■ Excellent

Operating noise

■■■□□ Good

Floor surface preservation

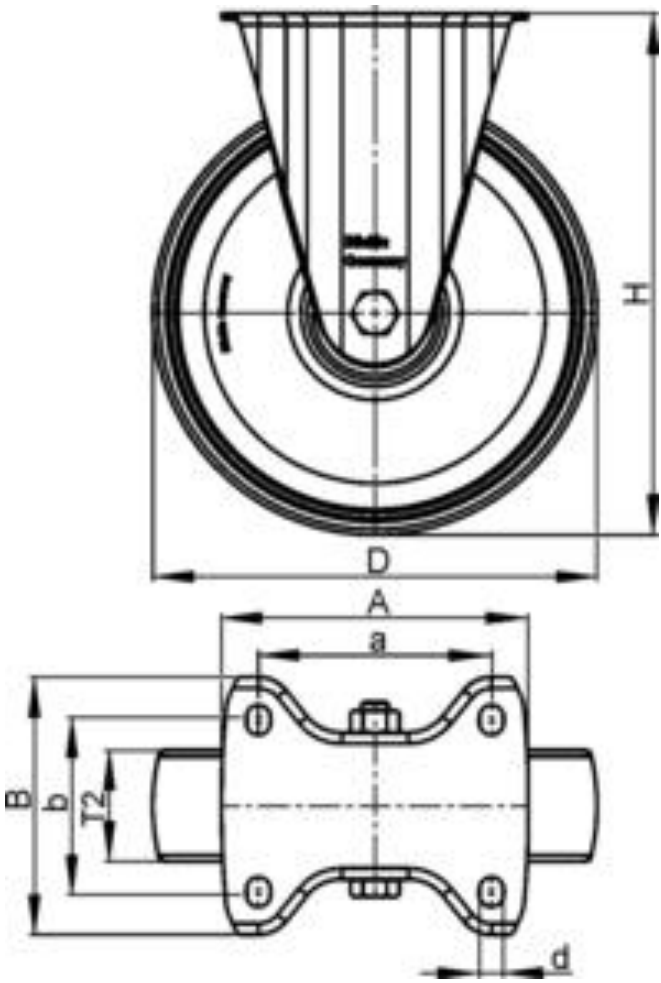
■■■□□ Good

Product Data Sheet



Technical data

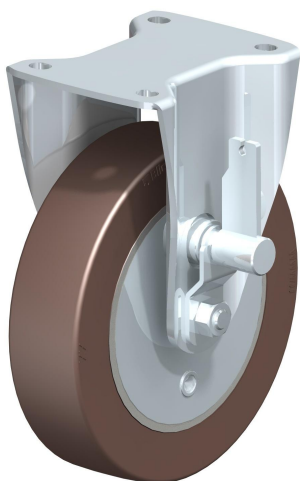
Plate size		140 x 110
Bolt hole spacing		105 x 75-80
Bolt hole Ø		11
Wheel Ø		200 mm (D)
Wheel width		50 mm (T2)
Load capacity		900 kg
Total height		245 mm (H)
unit weight		5,1 kg
Temperature resistance		-25 ° C
Temperature resistance to		70 ° C
tread and tyre hardness		92° Shore A
Bearing type:		Ball bearing



Product Data Sheet

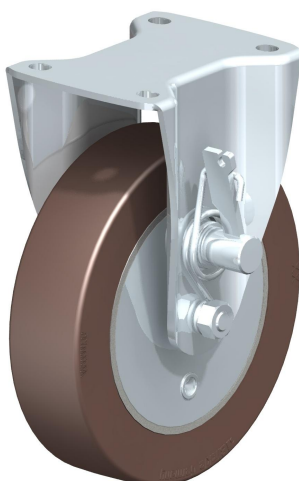


Variants



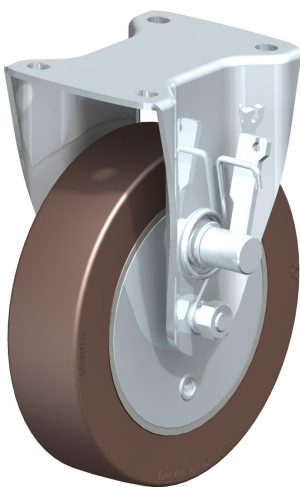
BH-GB 200K-TB

Fixed castor with drum brake, Heavy duty wheel with Blickle Besthane® polyurethane tread, with cast iron wheel centre



BH-GB 200K-TML

Fixed castor with dead man' s brake, Heavy duty wheel with Blickle Besthane® polyurethane tread, with cast iron wheel centre



BH-GB 200K-TMR

Fixed castor with dead man' s brake, Heavy duty wheel with Blickle Besthane® polyurethane tread, with cast iron wheel centre