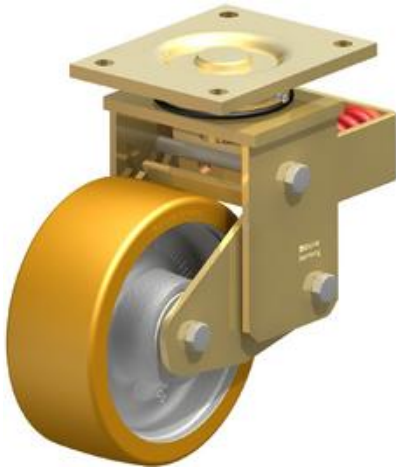


EA986KM-200



EAN: 4047526273439

ID: 273433

Welded steel heavy duty swivel castor with steel spring, Heavy duty wheel with Blickle Extrathane® polyurethane tread, with cast iron wheel centre

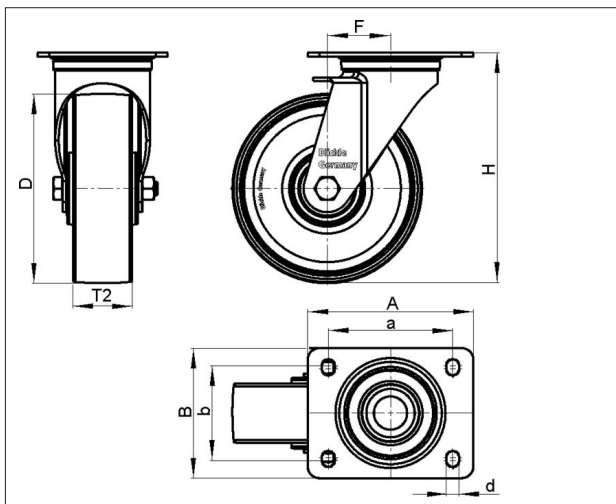
Bracket:

Particularly rugged welded steel construction, with axial grooved ball bearing DIN 711 and tapered roller bearing DIN 720 in the swivel head, dust and splash-proof, fitted grease nipple, bolted and secured with a welded very strong central kingpin, rugged fork and hinged plate construction with maintenance-free steel spring mechanism. Bolted wheel axle. Zinc-plated, yellow-passivated, Cr6-free.

Wheels:

Tyre & running tread: Made of high-quality, reaction-injected polyurethane-elastomer Blickle Extrathane®, low-noise operation, low rolling resistance, good floor preservation, very high abrasion resistance, high cut and tear propagation resistance, very good chemical connection with the wheel centre. Tread colour: light brown

Rim / wheel centre: Made of grey cast iron, lacquered. Casted tread.



Technical data

Wheel Ø (D)	200 mm
Wheel width (T2)	80 mm
Load capacity	1600 kg
Total height (H)	275 mm
Spring tension	750 kg
Initial tension	100 kg
Spring travel	25 mm
Offset swivel castor (F)	100 mm
Unit weight	18.125 kg
Temperature range from	-25 °C
Temperature range to	70 °C
Tread & tyre hardness	92° Shore A
Bearing type	
Plate size (A,B)	175 x 140 mm
Bolt hole Ø (d)	14 mm
Bolt hole spacing (a,b)	140 x 105 mm

Rolling resistance



Operating noise



Floor surface preservation

