

Product Data Sheet



BSD-GTH 200K-35

EAN 4047526607906

ID 607903

Welded steel heavy duty twin wheel fixed castor, Heavy duty wheel with Blickle Extrathane® polyurethane tread, with cast iron wheel centre

Bracket:

Particularly rugged welded steel construction. Bolted wheel axle. Zinc-plated, yellow-passivated, Cr6-free.

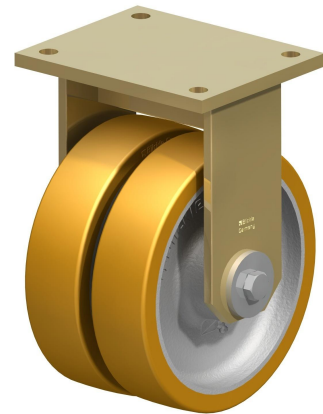
Wheels:

Made of high-quality, reaction-injected polyurethane-elastomer Blickle Extrathane®, low-noise operation, low rolling resistance, good floor preservation, very high abrasion resistance, high cut and tear propagation resistance, very good chemical connection with the wheel centre.

Tread colours: light brown

Wheel centre/rim: Made of grey cast iron, with grease nipple, lacquered.

Wheel centre colour: silver



Rolling resistance

■■■■□ Very good

Operating noise

■■■■□ Good

Floor surface preservation

■■■■□ Good

Product Data Sheet



Technical data

Plate size		140 x 175
Bolt hole spacing		105 x 140
Bolt hole Ø		14
Wheel Ø		200 mm (D)
Wheel width		2 x 50 mm (T2)
Load capacity		1800 kg
Total height		260 mm (H)
unit weight		12,2 kg
Temperature resistance		-25 ° C
Temperature resistance to		70 ° C
tread and tyre hardness		92° Shore A
Bearing type		Ball bearing

