

Product Data Sheet



LKX-POTH 75G

EAN 4047526084943

ID 754901

Stainless steel heavy duty swivel castor with top plate fitting, Wheel with thermoplastic polyurethane tread, with heavy nylon wheel centre, non-marking, non-staining

Bracket:

Made of heavy pressed high-quality, chromium-nickel stainless steel (Material No. 1.4301/AISI 304), with double ball bearing in the swivel head, swivel head seals. The specific Blickle dynamic riveting process of the swivel head results in minimal swivel head play and smooth rolling characteristics with an increased service life achieved by the work hardening of the ball race grooves. All parts incl. axle material are corrosion-resistant. Bolted wheel axle. Vibration-ground finished.

Wheels:

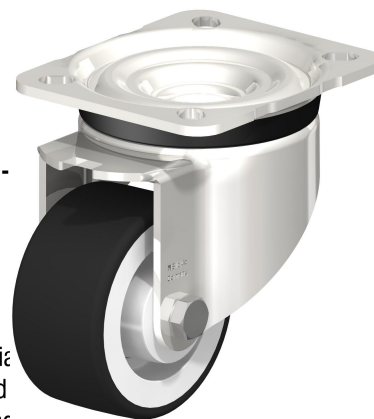
Made of high-quality thermoplastic polyurethane, high operational comfort, low-noise operation, low rolling and swivelling resistance, good floor preservation, very high abrasion resistance, chemically bonded for an inseparable connection to the wheel centre.

Tread colours: dark grey

Wheel centre/rim: Made of high-quality, impact-resistant nylon.

Wheel centre colour: natural white

Variant: non-marking, non-staining



Rolling resistance

■■■■□ Very good

Operating noise

■■■■□ Good

Floor surface preservation

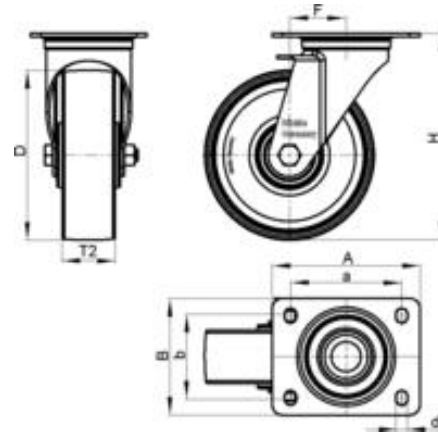
■■■■□ Good

Product Data Sheet



Technical data

Plate size		100 x 85
Bolt hole spacing		80 x 60
Bolt hole Ø		9
Wheel Ø		75 mm (D)
Wheel width		37 mm (T2)
Load capacity		200 kg
Total height		108 mm (H)
Offset swivel castor		40 mm
unit weight		kg
Temperature resistance		-25 ° C
Temperature resistance to		70 ° C
tread and tyre hardness		94° Shore A
Bearing type		Plain bore



Product Data Sheet



Variants



LKX-POTH 75G-FI

Stainless steel heavy duty swivel castor with top plate fitting and 'stop-fix' brake, Wheel with thermoplastic polyurethane tread, with heavy nylon wheel centre