

## EA986RM-82



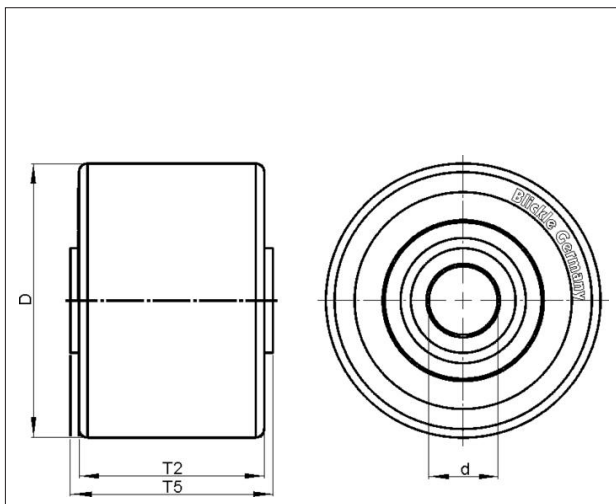
**EAN: 4047526269692**

**ID: 269696**

**Rollers for pallet trucks with Blickle Extrathane® polyurethane tread, with steel wheel centre**

**Tyre & running tread:** Made of high-quality, reaction-injected polyurethane-elastomer Blickle Extrathane®, low-noise operation, low rolling resistance, good floor preservation, very high abrasion resistance, high cut and tear propagation resistance, very good chemical connection with the wheel centre. Tread colour: light brown

**Rim / wheel centre:** Made of steel or grey cast iron.



### Technical data

Wheel Ø (D)	82 mm
Wheel width (T2)	60 mm
Load capacity	440 kg
Ball bearing	6204 ZZ
Bearing seat Ø (S)	0 mm
Bearing seat depth (t)	0 mm
Axle bore Ø (d)	20 mm
Clamping length (T5)	60 mm
Unit weight	0.942 kg
Temperature range from	-25 °C
Temperature range to	70 °C
Tread & tyre hardness	92° Shore A
Bearing type	

Rolling resistance



Operating noise



Floor surface preservation

