

Product Data Sheet



ALTH 200X50/20-54K

EAN 4047526470296

ID 470294

Steer wheels for pallet trucks

Wheels:

Made of high-quality, reaction-injected polyurethane-elastomer Blickle Extrathane®, low-noise operation, low rolling resistance, good floor preservation, very high abrasion resistance, high cut and tear propagation resistance, very good chemical connection with the wheel centre.

Tread/tyre:

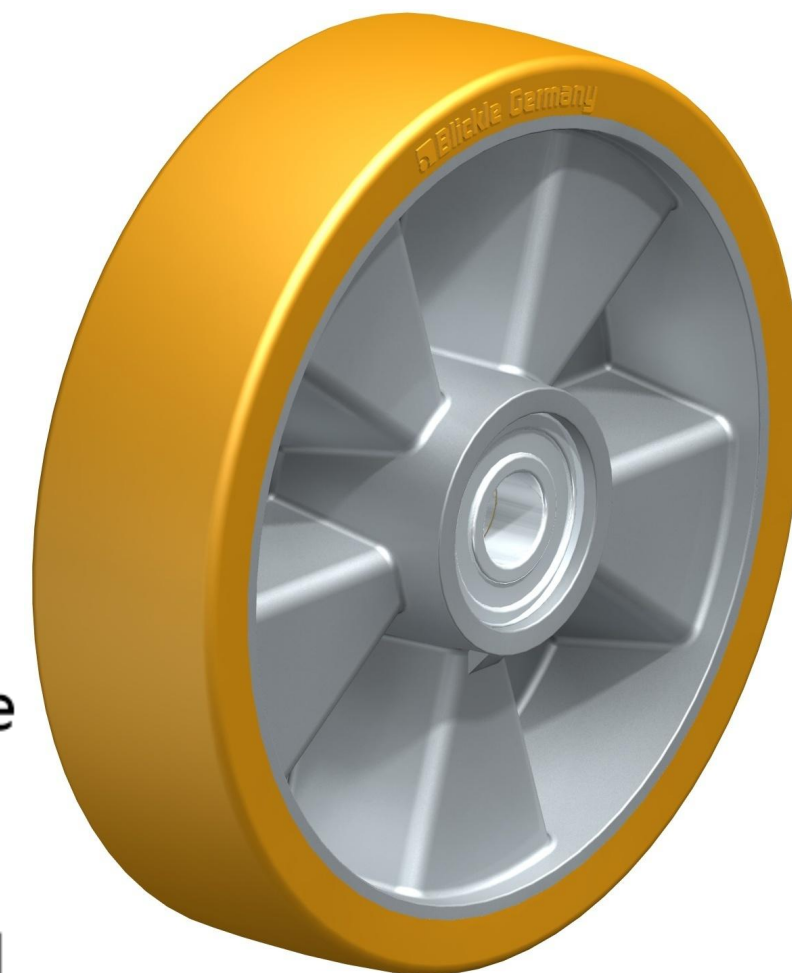
Made of high-quality polyurethane-elastomer Blickle Extrathane®.

Tread colours light brown

Wheel centre/rim:

Made of die-cast aluminium. Casted tread.

Wheel centre colour: silver grey



Rolling resistance

■■■■□ Very good

Operating noise

■■■■□□ Good

Floor surface preservation

■■■■□□ Good

Product Data Sheet



Technical data

Wheel Ø		200 mm (D)
Wheel width		50 mm (T2)
Load capacity		800 kg
Axle bore Ø		20 mm (d)
Clamping length		54 mm (T5)
Hub length		60 mm (T1)
unit weight		1,5 kg
Temperature resistance		-25 ° C
Temperature resistance to		70 ° C
tread and tyre hardness		92° Shore A
Bearing type:		Ball bearing

