

# Product Data Sheet



## FSTH 125x25/25-15K

EAN 4047526464042

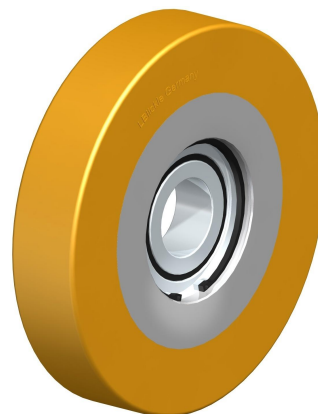
ID 464040

### Guide roller with Blickle Extrathane® polyurethane tread, with steel wheel centre Wheels:

Made of high-quality, reaction-injected polyurethane-elastomer Blickle Extrathane®, low-noise operation, low rolling resistance, good floor preservation, very high abrasion resistance, high cut and tear propagation resistance, very good chemical connection with the wheel centre.

**Tread colours:** light brown

**Wheel centre/rim:** Made of steel. Casted tread. **Wheel centre colour:** silver



#### Rolling resistance

■■■■□ Very good

#### Operating noise

■■■■□ Good

#### Floor surface preservation

■■■■□ Good

### Technical data

Wheel Ø		125 mm (D)
Wheel width		25 mm (T2)
Load capacity		275 kg
Axle bore Ø		25 mm (d)
Clamping length		15 mm (T5)
unit weight		1 kg
Temperature resistance		-25 ° C
Temperature resistance to		70 ° C
tread and tyre hardness		92° Shore A
Bearing type		Ball bearing

