

Product Data Sheet



FSTH 60x20/15-13K

EAN 4047526463960

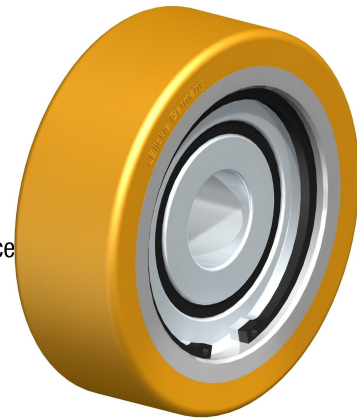
ID 463968

Guide roller with Blickle Extrathane® polyurethane tread, with steel wheel centre Wheels:

Made of high-quality, reaction-injected polyurethane-elastomer Blickle Extrathane®, low-noise operation, low rolling resistance, good floor preservation, very high abrasion resistance, high cut and tear propagation resistance, very good chemical connection with the wheel centre.

Tread colours: light brown

Wheel centre/rim: Made of steel. Casted tread. **Wheel centre colour:** silver



Rolling resistance

■■■■□ Very good

Operating noise

■■■■□ Good

Floor surface preservation

■■■■□ Good

Technical data

Wheel Ø		60 mm (D)
Wheel width		20 mm (T2)
Load capacity		105 kg
Axle bore Ø		15 mm (d)
Clamping length		13 mm (T5)
unit weight		0,2 kg
Temperature resistance		-25 ° C
Temperature resistance to tread and tyre hardness		70 ° C
tread and tyre hardness		92° Shore A
Bearing type		Ball bearing

