

OPERATING INSTRUCTIONS AND SAFETY NOTES

Barrel pump **G2" - ~~M64x4~~** for diesel and heating oil



Pressol Schmiergeräte GmbH

This documentation is exclusively intended for the operating company and their staff.

Without our written consent, the content of this documentation (textes, figures, drawings, charts, diagrams etc.), must not be duplicated or distributed, neither in full or in part, utilized for the purpose of competition or passed on/made available to third parties.

Pressol Schmiergeräte GmbH

Parkstraße 7

93167 Falkenstein | Germany

Tel. +49 9462 17-0

Fax +49 9462 17-208

info@pressol.com

www.pressol.com

Operating instructions translation

Date of issue: 01/2021

We reserve the right to make design and product modifications, which serve to improve the product.

Table of Contents

1.	Introduction	3
1.1.	Preface	3
1.2.	Obligations of the personnel	3
1.3.	Symbols in this manual	3
1.3.1.	Structure of the safety notes	3
1.3.2.	Hazard symbols	3
1.3.3.	General symbols	4
2.	Intended conditions of use	4
3.	Risks when handling diesel fuels and heating oils	4
4.	Technical data	4
5.	Assembly	4
6.	Commissioning	5
7.	Disposal	5
8.	Repair/Service	5
9.	Exploded view of the barrel pump with discharge spout	6

1. Introduction

1.1. Preface



IMPORTANT

- Read and observe the directions of use carefully before use.

Our staff will be pleased to provide support if you have any questions about the product.

Yours sincerely, Pressol Schmiergeräte GmbH

1.2. Obligations of the personnel

Before they start to work, all persons who are entrusted to work with the barrel pump are obliged:

- to follow all applicable regulations on occupational safety and accident prevention.
- to read and to comply with all safety instructions and warning notes contained in these operating instructions.

Please observe the following instructions in the interest of all concerned:

- Refrain from any unsafe working methods!
- In addition to this documentation, keep to all generally accepted safety rules, legal provisions as well as all other binding rules regarding occupational safety, accident prevention and environmental protection!
- Wear appropriate protective clothing in accordance with the work to be done!
- Perform only work for which you have been sufficiently trained and instructed!
- Only genuine spare parts as well as original tools and auxiliaries of the manufacturer are allowed to be used in order to ensure the functional safety and maintain the warranty coverage.

1.3. Symbols in this manual

1.3.1. Structure of the safety notes

The warning notes have the following structure:



SIGNAL WORD

Type and source of the hazard

- Consequences of non-compliance with the notes
- Measures to avoid that risk

Depending on the danger level, different signal words are used:

Signal word	Danger level	Consequences of non-compliance
DANGER	Imminent threat of danger	Death or serious bodily injury



Note

Indicates further information or tips which facilitate work

1.3.2. Hazard symbols

Symbol	Meaning
	This symbol warns of a hazardous explosive atmosphere

1.3.3. General symbols

Symbol	Meaning
■	A small black square indicates the work you have to perform
–	The dash denotes lists

2. Intended conditions of use

- The barrel pump may only be used to discharge oils, up to SAE 50, diesel, petroleum, kerosene, glycerin, antifreeze undiluted.
- The temperature of the pumped liquid must be between +10 °C and +35 °C.
- The pumping of explosive liquids is prohibited.
- Use in the food industry is prohibited.
- The user is liable for any damage resulting from non-intended use.



DANGER

Risk of injury and material damage from explosive vapors!

- Never use the pump to deliver explosive fluids such as petrol or other fluids with similar flashpoints!

3. Risks in handling diesel and heating oil solutions

Diesel fuels and heating oils are flammable liquids. If improperly handled, they can cause risks to human health or to the environment.



NOTE

- Avoid skin and eye contact. In case of contact with the eyes, rinse the eyes with plenty of drinking water and consult a physician!
- Observe the safety sheets for diesel and heating oil!

4. Technical data

Pump type	Hand pump 13044	
Delivery rate	(l/stroke)	0,4
Delivery rate at 60 strokes per minute	(l/min)	24
Pumping media	Oils, up to SAE 50, diesel, petroleum, kerosene, glycerin and antifreeze undiluted	
Usage	Barrels 60/200/220 l	
Telescopic suction tube 3-pieces	(mm)	355-955
Barrel screw couplings	G 2" male and M64x4 male	
Materials of parts in contact with liquid		
Pump body	ABS / PA 6	
Seals	FKM	

5. Assembly

Check and prepare all parts before assembly.

- Mount the telescopic suction tube to the pump. See fig. 5.-1 (1)
- Fit the curved discharge spout with the union nut to the pump. See fig. 5.-1 (1)
- Screw in the pump lever. See fig. 5.-1 (1)
- Screw the barrel screw coupling into the barrel, hand-tighten. See fig. 5.-1 (2)
- Align the pump to the desired position and press downwards. See fig. 5.-1 (2)

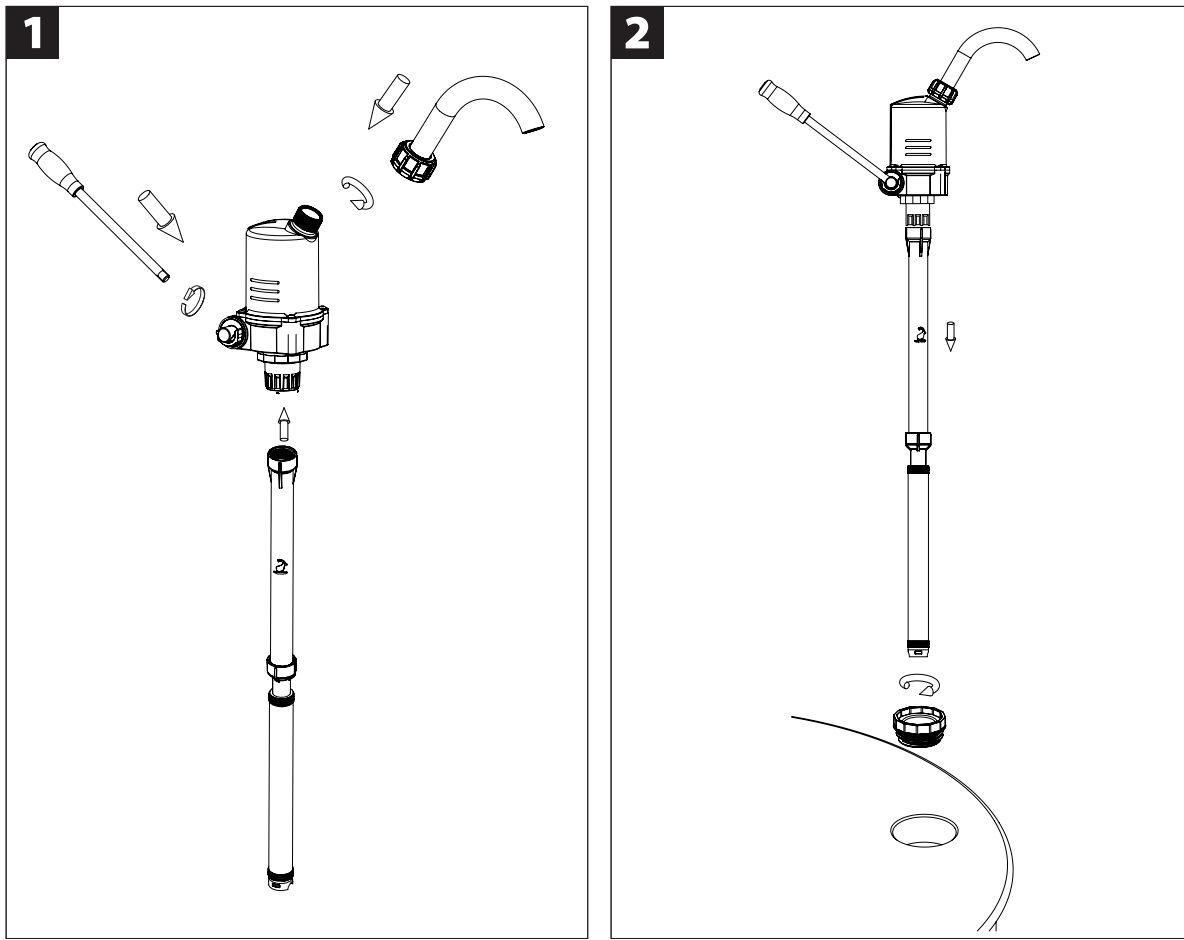


Fig. 5.-1: Assembly example

6. Commissioning

- Before starting up, check the pump for proper installation and visible damage.
- Operate the lever several times until the pump sucks.

7. Disposal

The operating company is responsible for the proper disposal of the pump.

Dispose of the different materials in accordance with all industry-specific, local, regional and federal regulations.

Only qualified personnel is authorized to disassemble and dispose of the barrel pump.

8. Repair/Service

The barrel pump for diesel and heating oil was developed and produced according to the highest quality standards.

Should a problem develop, despite all quality controls, please contact our customer service:

Pressol Schmiergeräte GmbH

Tel.: +49 9462 17-246

Fax: +49 9462 1063

service@pressol.com

9. Exploded view of the barrel pump with discharge spout

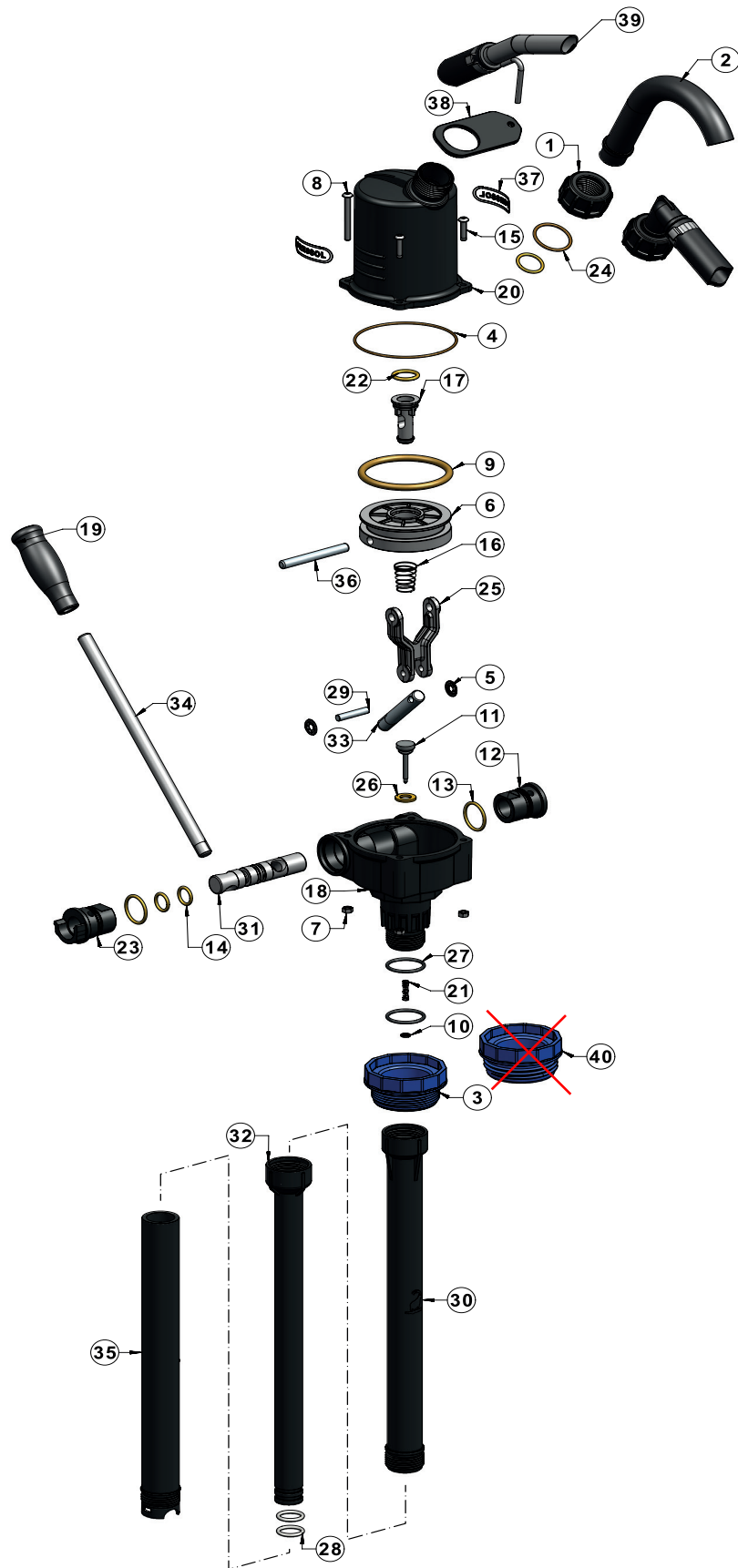


Fig. 9-1: Exploded view of the barrel pump for diesel and heating oil with discharge spout

Pos.	Quantity	Description	Item number
1	1	Coupling nut-G 1"	82 857 012
2	1	Curved discharge spout, plastic	81 112
3	1	Barrel screw coupling-G 2" male	13 085
4	1	O-ring FKM 70-84x2	81 509 879
5	2	Lock washer	81 507
6	1	Piston	81 501
7	4	Hexagon nut	86 773
8	2	Lens head screw	81 514
9	1	O-ring FKM 80-69x6	81 640
10	1	Locking washer	00 159 889
11	1	Valve cone	87 982
12	1	Bearing sleeve-close-black	81 499 001
13	2	O-ring FKM 70-24x2.5	81 515 879
14	2	O-ring FKM 70-14x2.5	81 517 879
15	2	Lens head screw	81 636
16	1	Compression spring conical	81 508
17	1	Piston valve	81 502
18	1	Pump housing-black	81 496 001
19	1	Handle	81 492
20	1	Pump cylinder	81 493 001
21	1	Compression spring	87 932 889
22	1	O-ring FKM 70-18x3	81 516 879
23	1	Bearing sleeve-open-black	81 498 001
24	2	O-ring FKM 80-20x2,5	86 921 878
25	1	Con rod	81 503
26	1	Flat gasket	87 920
27	2	O-ring FKM 80-29x2,5	89 111 878
28	2	O-ring FKM 70-19,5x3	83 013
29	1	Con rod pin	87 346
30	1	Lenghthening	81 617
31	1	Pump shaft	87 349
32	1	Standpipe	81 619
33	1	Connecting rod	87 347
34	1	Lever	87 348
35	1	Immersion tube	81 618
36	1	Piston pin	87 345
37	2	PRESSOL-Logo	90 956
38	1	Hose holder	00 845
39	1	Discharge hose complete set	13 044 010
40	1	Barrel screw coupling-M64x4 male	13 085 003

M64 × 4オスのカップリングは付属していません。

Tab. 9.-1: Overview of components for fig. 9.-1

Pressol Schmiergeräte GmbH

Parkstraße 7

93167 Falkenstein | Germany

Tel. +49 9462 17-0

Fax +49 9462 17-208

info@pressol.com

www.pressol.com

