

OPERATING INSTRUCTIONS AND SAFETY NOTES

Barrel pump for AdBlue®



Pressol Schmiergeräte GmbH

This documentation is exclusively intended for the operating company and their staff.

Without our written consent, the content of this documentation (textes, figures, drawings, charts, diagrams etc.), must not be duplicated or distributed, neither in full or in part, utilized for the purpose of competition or passed on/made available to third parties.

Pressol Schmiergeräte GmbH

Parkstraße 7
93167 Falkenstein | Germany
Tel. +49 9462 17-0
Fax +49 9462 17-208
info@pressol.com
www.pressol.com

Operating instructions translation

Date of issue: 01/2021

We reserve the right to make design and product modifications, which serve to improve the product.

Table of Contents

1.	Introduction	3
1.1.	Preface	3
1.2.	Obligations of the personnel	3
1.3.	Symbols in this manual	3
1.3.1.	Structure of the safety notes	3
1.3.2.	General symbols	4
2.	Intended conditions of use	4
2.1.	Reasonably foreseeable misuse	4
3.	Risks in handling AdBlue® solution	4
4.	Technical data	4
5.	Assembly	5
6.	Commissioning	5
7.	Disposal	6
8.	Repair/Service	6
9.	Exploded view of the barrel pump for AdBlue®	6

1. Introduction

1.1. Preface



IMPORTANT

- Read and observe the operating instructions carefully before use.

Our staff will be pleased to provide support if you have any questions about the product.

Yours sincerely, Pressol Schmiergeräte GmbH

1.2. Obligations of the personnel

Before they start to work, all persons who are entrusted with work with the barrel pump for AdBlue® are obliged:

- To follow all applicable regulations on occupational safety and accident prevention.

Please observe the following instructions in the interest of all concerned:

- Refrain from any unsafe working methods!
- In addition to this documentation, keep to all generally accepted safety rules, legal provisions as well as all other binding rules regarding occupational safety, accident prevention and environmental protection!
- Wear appropriate protective clothing in accordance with the work to be done!
- Perform only work for which you have been sufficiently trained and instructed!
- Only genuine spare parts as well as original tools and auxiliaries of the manufacturer are allowed to be used in order to ensure the functional safety and maintain the warranty coverage.
- Never stock or handle these products in the proximity of a heat, spark or flame source.
- Stock these products in a cool, ventilated, aired and secure location.
- Ensure the compatibility of the fluid with the pump before any use.
- Work in a sufficiently ventilated area.

1.3. Symbols in this manual

1.3.1. Structure of the safety notes

The warning notes have the following structure:



SIGNAL WORD

Type and source of the hazard

- Consequences of non-compliance with the notes.
- Measures to avoid that risk.

Depending on the danger level, different signal words are used:

Signal word	Danger level	Consequences of non-compliance
DANGER	Imminent threat of danger	Death or serious bodily injury



Note

Indicates further information or tips which facilitate work

1.3.2. General symbols

Symbol	Meaning
■	A small black square indicates the work you have to perform.
–	The dash denotes lists

2. Intended conditions of use

- The barrel pump may only be used to discharge AdBlue®.
- The temperature of the pumped liquid must be between -5 °C and +35 °C.
- After use, clean the pump with warm water in order to prevent the formation of crystals which may damage the pump.
- The user is liable for any damage resulting from non-intended use.

2.1. Reasonably foreseeable misuse

**DANGER**

Risk of injury and material damage from explosive vapors

- **Never use the pump to deliver explosive or oily fluids such as petrol or other fluids with similar flashpoints!**

- The pumping of explosive liquids is prohibited.
- Use in the food industry is prohibited.
- Not suitable for fuels, hydraulic oils, engine oils, oils, thinners, solvents, windscreen wash, anti-freeze, soaps or any flammable liquids.

3. Risks in handling AdBlue® solution

The AdBlue® concentrate is non-flammable, non-explosive and not oxidizing.

**NOTE**

- For cleaning, flush equipment with water. Dispose of released contaminated fluid. Dispose of released contaminated fluid according to the statutory provisions. In general, dilution with water is sufficient.
- **AdBlue® is corrosive to non-ferrous metals. Avoid skin and eye contact. In case of contact with the eyes, rinse the eyes with plenty of drinking water and consult a physician.**
- Observe the safety sheet for AdBlue®.

4. Technical data

Pump type	Barrel pump 13 004; 13 004 950; 13 004 960
Delivery rate	0,5 (l/stroke)
Delivery rate at 60 strokes/min	ca. 30 l/min
Pumping media	AdBlue®
Usage	Container, for 60 / 200 / 220 l
Discharge	13 004/13 004 960: detachable transparent discharge hose, 1,5 m 13 004 950: Mechanical control nozzle for AdBlue® (ZVMU) (23 161 878), Discharge hose, 6 m (25 191)
Length, three-part suction pipe	1000 mm
Barrel screw coupling	13 004/13 004 950: G 2" m 13 004 960: G 2" f and M 56 x 4 m

Materials of parts in contact with liquid

Pump body	PP
Seals	FKM
Suction pipe	PP

5. Assembly

Check and prepare all parts before assembly.

- Insert tube B in tube A (N° 1).
- Insert the tube formed by A+B in the pump entry (N° 2).
- Adjust the length of tube C to get the desired length. (N° 3).
- The tubes B + C are fastened with a bolt (which comes with a seal).

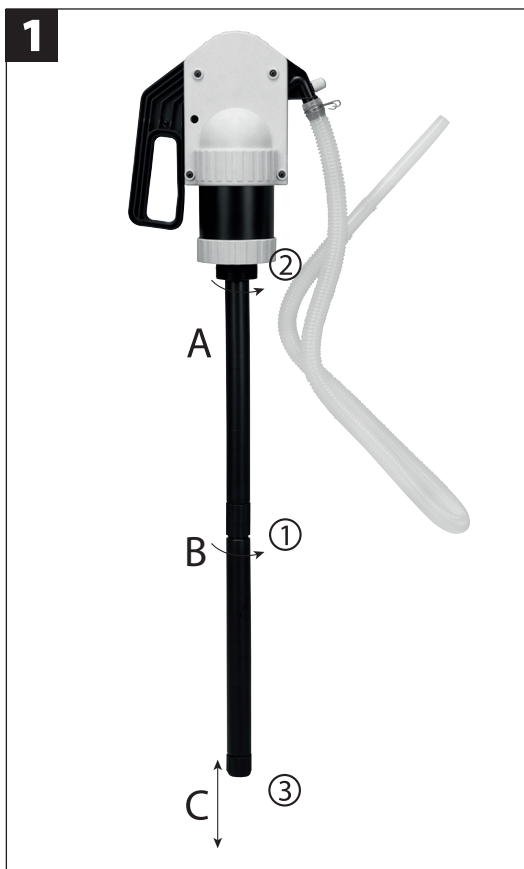


Fig. 5.-1 Assembly example



Fig. 6.-1 Commissioning

6. Commissioning

- Before starting up, check the pump for proper installation and visible damage.
- Insert the tube in the barrel and fasten the pump on the barrel (N° 2).
- Place the pump in the desired position and fasten it with a nut (N° 1).
- Can also be used for pumping from canisters with adapter (17 095).
- Insert the transparent tubing in the pump's exit hole and secure it with the clamp (N° 3).
- Raise and lower the handle quickly until the liquid starts to come out (N° 4)
- Turn the venting cap counterclockwise to stop the flow of liquid.

7. Disposal

The operating company is responsible for the proper disposal of the barrel pump.

Dispose of the different materials in accordance with all industry-specific, local, regional and federal regulations.

Only qualified personnel is authorized to disassemble and dispose of the AdBlue® barrel pump.

8. Repair/Service

The barrel pump was developed and produced according to the highest quality standards.

Should a problem develop, despite all quality controls, please contact our customer service:

PRESSOL Schmiergeräte GmbH

Tel.: +49 9462 17-246

Fax: +49 9462 1063

service@pressol.com

9. Exploded view of the barrel pump for AdBlue®

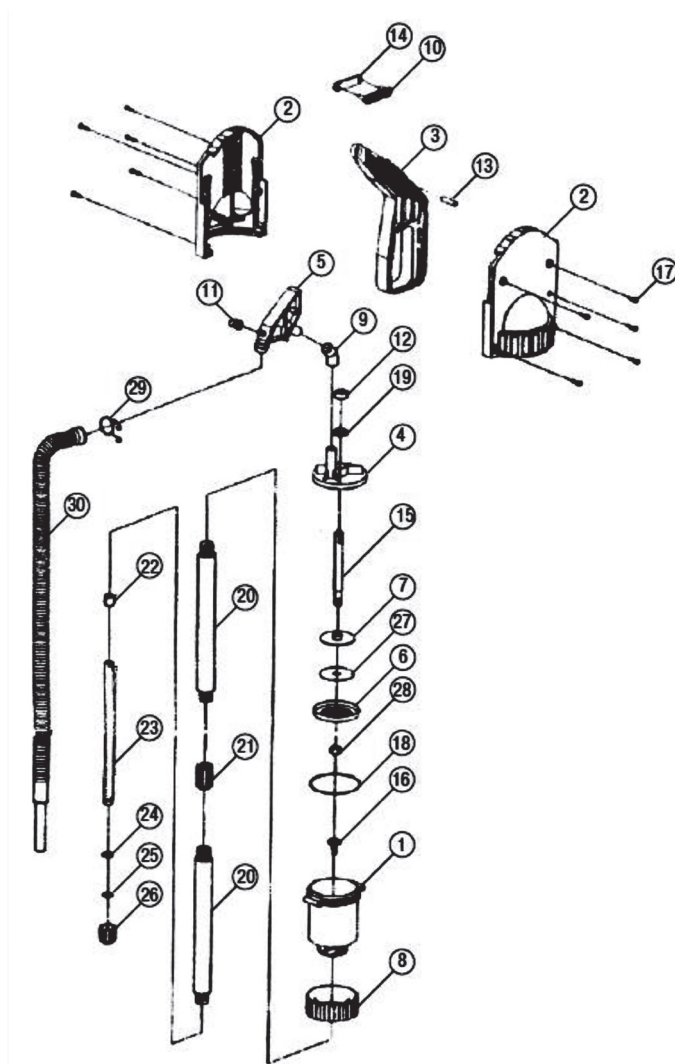


Fig. 9.-1: Exploded view of the barrel pump for AdBlue®

N°	Qty	Description
1	1	Cylinder
2	2	Pump body
3	1	Lever
4	1	Top cover
5	1	Mouth piece
6	1	Piston
7	1	Piston plate
8	1	Nut
9	1	Mouth piece connector
10	1	Connecting rod
11	1	Venting plug
12	1	Guiding spacer
13	1	Axle
14	1	Connecting rod plate
15	1	Shaft
16	1	Vacuum valve
17	10	Screw
18	1	Cylinder seal
19	1	Shaft seal
20	2	Hose
21	1	Connector
22	1	Tubing ring
23	1	Tubing
24	1	Ring
25	1	Nut seal
26	1	Tubing nut
27	1	Disc
28	1	Nut
29	1	Clamp
30	1	Discharge hose

Fig. 9.-1: Overview of components for fig. 9.-1

Accessories 13 004 950

1	Mechanical control nozzle for AdBlue® (ZVMU) (23 163 878)
1	Discharge hose, 6 m (25 191)

Accessories 13 004 960

1	Barrel screw coupling, for plastic container, connecting thread G 2" and Tri-sure 1" PM (13 080 390)
---	--

Pressol Schmiergeräte GmbH

Parkstraße 7

93167 Falkenstein | Germany

Tel. +49 9462 17-0

Fax +49 9462 17-208

info@pressol.com

www.pressol.com

