



扫微信二维码
关注谱尼测试



Pony Testing International Group

Test Report

NO.: MNCGE2RX18170744

Date: May 06, 2019

Page 1 of 6

Applicant: HUI ZHOU LONG XIN DA ELECTRONIC DEVICE CO., LTD
Address: No.34 Group 1 Xiacun Village, Ruhu Town, Huicheng District, Huizhou City, Guangdong

The following sample(s) was/were submitted and identified on behalf of the client as:

Sample Name: Auto Fuse Holder
Sample Model: LXD-104、LXD-105、LXD-106、LXD-107、LXD-108、LXD-109
Manufacturer: HUI ZHOU LONG XIN DA ELECTRONIC DEVICE CO., LTD
Sample Description: See the Results Page(s)
Test Component: See the Results Page(s)

Sample Received Date: Apr 26, 2019
Testing Period: Apr 26, 2019 TO May 06, 2019

Reference Requested: RoHS Directive 2011/65/EU & (EU)2015/863 Annex II

Reference Method:
(1) IEC 62321-5 Edition 1.0:2013 method, Lead Analysis is performed by AAS
(2) IEC 62321-5 Edition 1.0:2013 method, Cadmium Analysis is performed by AAS
(3) IEC 62321-4:2013+AMD1:2017 CSV method, Mercury Analysis is performed by ICP-OES
(4) IEC62321-7-1 Edition1.0:2015 & IEC62321-7-2 Edition 1.0:2017 method, Hexavalent Chromium Analysis is performed by UV-Vis
(5) IEC 62321-6 Edition 1.0:2015 method, PBBs and PBDEs Analysis is performed by GC-MS
(6) IEC 62321-8 Edition 1.0:2017 method, Phthalates Analysis is performed by GC-MS

Test Result: Please refer to next page(s)

Approved by: *Maozu aiy*



微信扫一扫，使用小程序



小程序扫一扫，在线验证

Code: r6jr50o



Beijing Lab: (010)83055000
Shanghai Lab: (021)64851999
Qingdao Lab: (0532)88706866
Shenzhen Lab: (0755)26050909
Tianjin Lab: (022)27360730
Suzhou Lab: (0512)62997900
Changchun Lab: (0431)85150908
Dalian Lab: (0411)87336618
Haerbin Lab: (0451)88104651
Zhengzhou Lab: (0371)69350670
Xinjiang Lab: (0991)6684186
Shijiazhuang Lab: (0311)85376660
Xian Lab: (029)89608785
Huhehaote Lab: (0471)3450025
Hangzhou Lab: (0571)87219096
Ningbo Lab: (0574)87736499
Wuhan Lab: (027)83997127
Hefei Lab: (0551)63843474
Guangzhou Lab: (020)89224310
Xiamen Lab: (0592)5568048
Chengdu Lab: (028)87702708



扫二维码
关注谱尼测试



Pony Testing International Group

Test Report

NO.: MNCGE2RX18170744

Date: May 06, 2019

Page 2 of 6

Test Results (Unit: mg/kg)

Sample No.	Sample Description/ Test Component	Test Result					
		Pb	Cd	Hg	Cr ⁶⁺	PBBs	PBDEs
X18170744-1	Gold metal terminal	47.3	N.D.	N.D.	Negative	—	—
X18170744-2	Silver metal terminal	N.D.	N.D.	N.D.	Negative	—	—
X18170744-3	Silver wire core	563	N.D.	N.D.	Negative	—	—
X18170744-4	Red thread leather and black terminal/Mix testing	N.D.	N.D.	N.D.	N.D.	N.D.	N.D.

Test Results (Unit: mg/kg)

Sample No.	Test Result			
	DEHP	DBP	BBP	DIBP
X18170744-4	N.D.	N.D.	N.D.	N.D.

- Note: (1) mg/kg = ppm
 (2) “—” = Does not stipulate
 (3) N.D. = Not Detected (<MDL)
 (4) MDL = Method Detection Limit
 (5) Unit: mg/kg

Test Item	MDL	RoHS Limit
Lead (Pb)	1	1000
Cadmium (Cd)	1	100
Mercury (Hg)	1	1000
Hexavalent Chromium(Cr ⁶⁺)	8(nonmetal)	1000
	See Note (7)(metal)	—
PBBs(Bro.~Dec.)	5	1000
PBDEs (Bro.~Dec.)	5	1000
DEHP	50	1000
DBP	50	1000
BBP	50	1000
DIBP	50	1000

- (6) The most allowable limit value reference to RoHS Directive 2011/65/EU & (EU)2015/863 Annex II
 (7) Boiling water extraction test:
 <0.10 µg/cm² expressed as “negative” results, indicates without hexavalent chromium in the plating
 0.10 µg/cm²~0.13 µg/cm² expressed as “not confirmative”, indicates that it can not be confirmative for the presence of hexavalent chromium in the plating, further test is needed.
 >0.13 µg/cm² expressed as “positive”, indicates that hexavalent chromium is detected in the plating.
 (8) The mixing sample test was performed as client's request. Result obtained only gives informality value and does not represent individual sample material.



Beijing Lab: (010) 83055000
 Shanghai Lab: (021) 64851999
 Qingdao Lab: (0532) 88706866
 Shenzhen Lab: (0755) 26050909
 Tianjin Lab: (022) 27360730
 Suzhou Lab: (0512) 62997900
 Changchun Lab: (0431) 85150908
 Dalian Lab: (0411) 87336618
 Haerbin Lab: (0451) 88104651
 Zhengzhou Lab: (0371) 69350670
 Xinjiang Lab: (0991) 6684186
 Shijiazhuang Lab: (0311) 85376660
 Xian Lab: (029) 89608785
 Huhehaote Lab: (0471) 3450025
 Hangzhou Lab: (0571) 87219096
 Ningbo Lab: (0574) 87736499
 Wuhan Lab: (027) 83997127
 Hefei Lab: (0551) 63843474
 Guangzhou Lab: (020) 89224310
 Xiamen Lab: (0592) 5568048
 Chengdu Lab: (028) 87702708



扫二维码
关注谱尼测试



Pony Testing International Group

Test Report

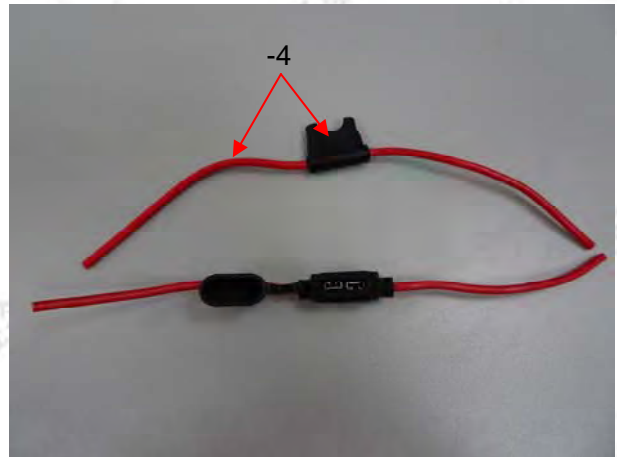
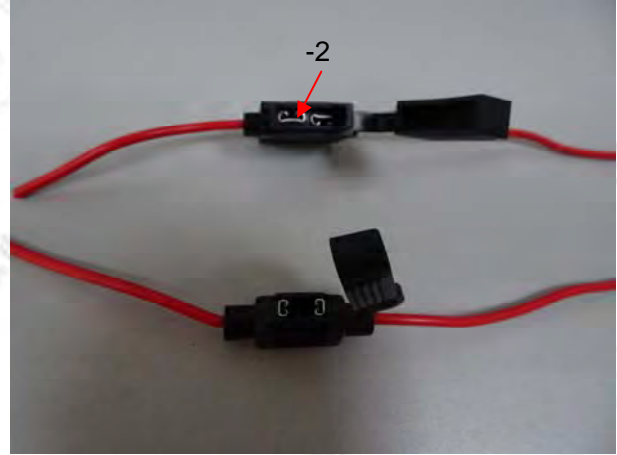
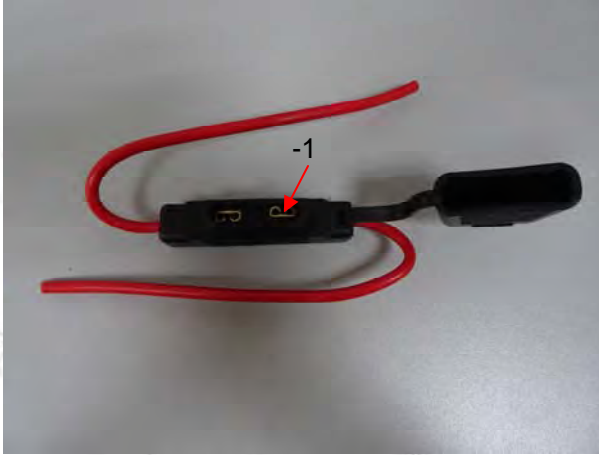
NO.: MNCGE2RX18170744

Date: May 06, 2019

Page 3 of 6

Sample No. & Photo:

X18170744



Pony authenticate the photo on original report only

Pony Testing International Group
 谱尼测试集团
 地址: 1F, Building 6, Zhongxing Industry City, Chuangye Road, Nanshan District, Shenzhen, Guangdong, China
 电话: 0755-86595688
 网址: www.ponytest.com

Beijing Lab: (010)83055000	Changchun Lab: (0431)85150908	Shijiazhuang Lab: (0311)85376660	Wuhan Lab: (027)83997127
Shanghai Lab: (021)64851999	Dalian Lab: (0411)87336618	Xian Lab: (029)89608785	Hefei Lab: (0551)63843474
Qingdao Lab: (0532)88706866	Haerbin Lab: (0451)88104651	Huhehaote Lab: (0471)3450025	Guangzhou Lab: (020)89224310
Shenzhen Lab: (0755)26050909	Zhengzhou Lab: (0371)69350670	Hangzhou Lab: (0571)87219096	Xiamen Lab: (0592)5568048
Tianjin Lab: (022)27360730	Suzhou Lab: (0512)62997900	Ningbo Lab: (0574)87736499	Chengdu Lab: (028)87702708
	Xinjiang Lab: (0991)6684186		



扫微信二维码
关注谱尼测试



Pony Testing International Group

Test Report

NO.: MNCGE2RX18170744

Date: May 06, 2019

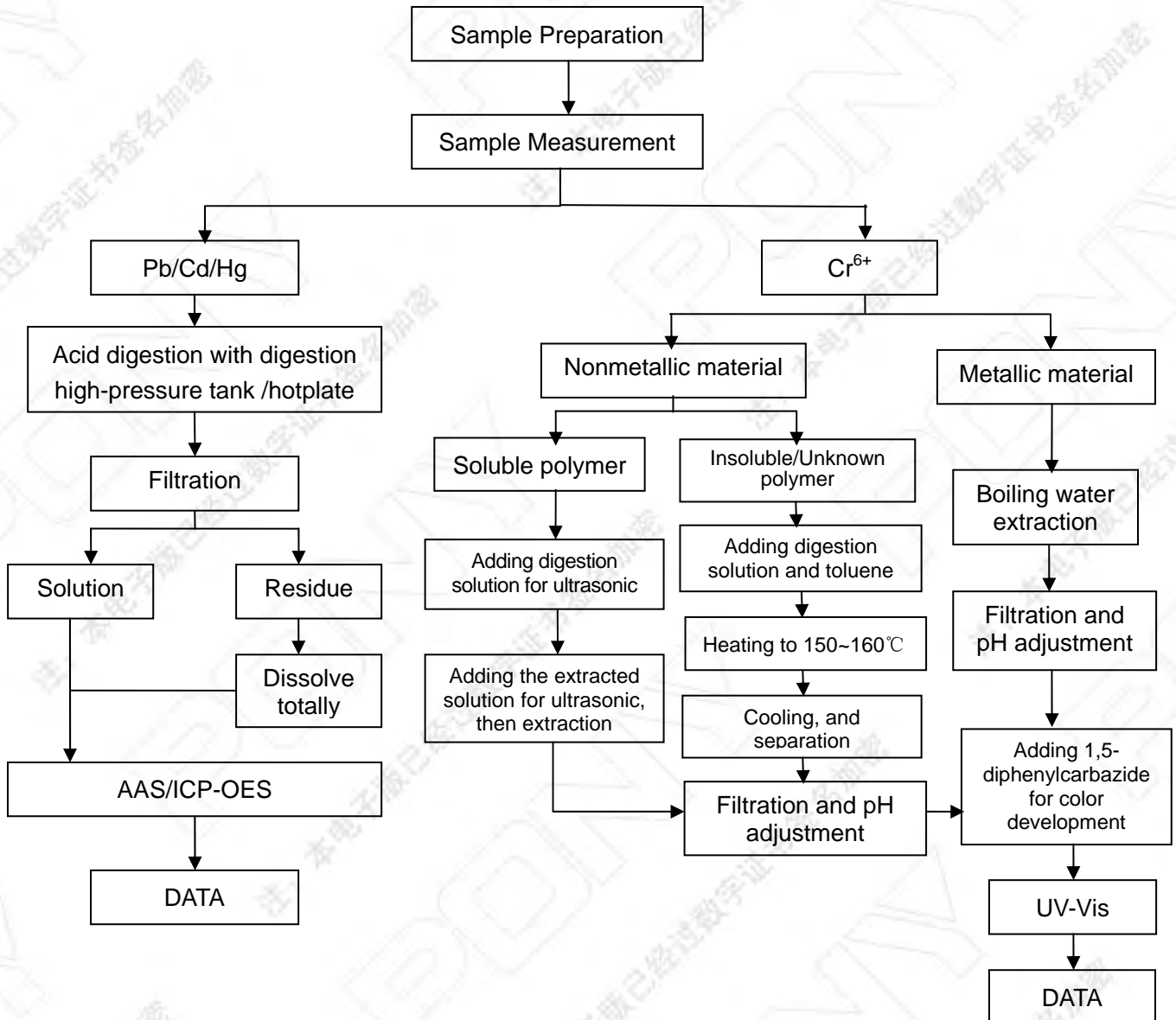
Page 4 of 6

Measurement Flow-chart

Tested by: Zhou Weiting Checked by: Yang Xin Person in charge of the lab by: Mao Zuqing

These Samples Were Dissolved Totally By Pre-conditioning Method According To Below Flow Chart.

(Cr⁶⁺ Test Method Excluded)



Pony Testing International Group
 谱尼测试集团深圳有限公司
 Address: 1F, Building 6, Zhongxing Industry City, Chuangye Road, Nanshan District, Shenzhen, Guangdong, China
 Hotline: 0755-26585688 www.ponytest.com

- | | | | |
|------------------------------|-------------------------------|----------------------------------|------------------------------|
| Beijing Lab: (010)83055000 | Changchun Lab: (0431)85150908 | Shijiazhuang Lab: (0311)85376660 | Wuhan Lab: (027)83997127 |
| Shanghai Lab: (021)64851999 | Dalian Lab: (0411)87336618 | Xian Lab: (029)89608785 | Hefei Lab: (0551)63843474 |
| Qingdao Lab: (0532)88706866 | Haerbin Lab: (0451)88104651 | Huhehaote Lab: (0471)3450025 | Guangzhou Lab: (020)89224310 |
| Shenzhen Lab: (0755)26050909 | Zhengzhou Lab: (0371)69350670 | Hangzhou Lab: (0571)87219096 | Xiamen Lab: (0592)5568048 |
| Tianjin Lab: (022)27360730 | Suzhou Lab: (0512)62997900 | Ningbo Lab: (0574)87736499 | Chengdu Lab: (028)87702708 |
| Xinjiang Lab: (0991)6684186 | | | |



扫微信二维码
关注谱尼测试



Pony Testing International Group

Test Report

NO.: MNCGE2RX18170744

Date: May 06, 2019

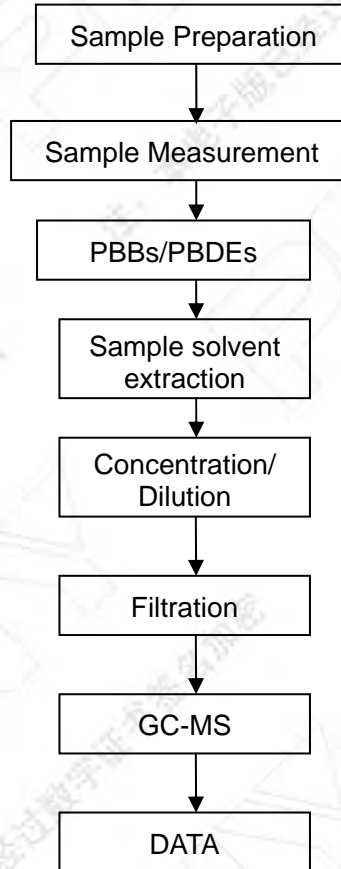
Page 5 of 6

Measurement Flow-chart

Tested by: Wang Yaowei

Checked by: Yang Xin

Person in charge of the lab by: Mao Zuqing



PONY TESTING INTERNATIONAL GROUP
 谱尼测试集团深圳有限公司
 Pony Testing International Group
 ©Hotline: 0755-26585688 www.ponytest.com
 Pony Testing International Group Shenzhen Co., Ltd.
 Address: 1F, Building 6, Zhongxing Industry City, Chuangye Road,
 Nanshan District, Shenzhen, Guangdong, China

Beijing Lab: (010)83055000	Changchun Lab: (0431)85150908	Shijiazhuang Lab: (0311)85376660	Wuhan Lab: (027)83997127
Shanghai Lab: (021)64851999	Dalian Lab: (0411)87336618	Xian Lab: (029)89608785	Hefei Lab: (0551)63843474
Qingdao Lab: (0532)88706866	Haerbin Lab: (0451)88104651	Huhehaote Lab: (0471)3450025	Guangzhou Lab: (020)89224310
Shenzhen Lab: (0755)26050909	Zhengzhou Lab: (0371)69350670	Hangzhou Lab: (0571)87219096	Xiamen Lab: (0592)5568048
Tianjin Lab: (022)27360730	Suzhou Lab: (0512)62997900	Ningbo Lab: (0574)87736499	Chengdu Lab: (028)87702708
	Xinjiang Lab: (0991)6684186		



扫二维码
关注谱尼测试



Pony Testing International Group

Test Report

NO.: MNCGE2RX18170744

Date: May 06, 2019

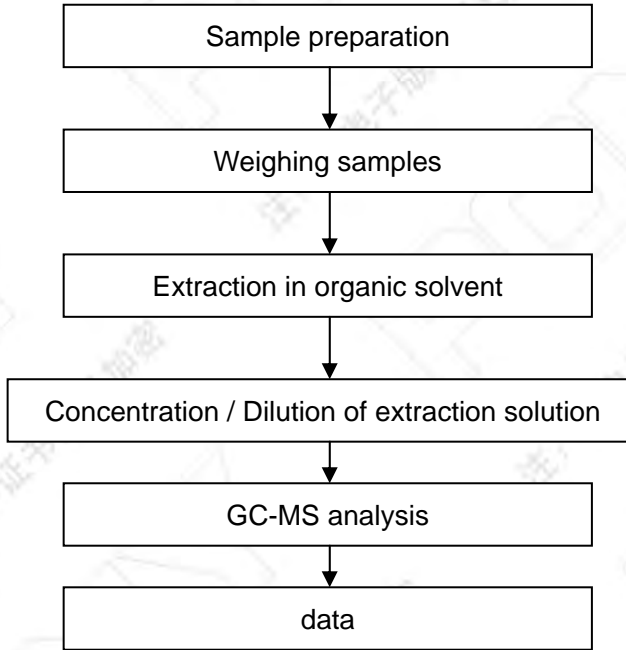
Page 6 of 6

Phthalates Measurement Flow-chart

Tested by: Jiang Yuejiao

Checked by: Yang Xin

Person in charge of the lab by: Mao Zuqing



End of Report

Pony Testing International Group
 谱尼测试集团
 地址: 1F, Building 6, Zhongxing Industry City, Chuangye Road, Nanshan District, Shenzhen, Guangdong, China
 电话: 0755-85056888
 网址: www.ponytest.com

- | | | | |
|------------------------------|-------------------------------|----------------------------------|------------------------------|
| Beijing Lab: (010)83055000 | Changchun Lab: (0431)85150908 | Shijiazhuang Lab: (0311)85376660 | Wuhan Lab: (027)83997127 |
| Shanghai Lab: (021)64851999 | Dalian Lab: (0411)87336618 | Xian Lab: (029)89608785 | Hefei Lab: (0551)63843474 |
| Qingdao Lab: (0532)88706866 | Haerbin Lab: (0451)88104651 | Huhehaote Lab: (0471)3450025 | Guangzhou Lab: (020)89224310 |
| Shenzhen Lab: (0755)26050909 | Zhengzhou Lab: (0371)69350670 | Hangzhou Lab: (0571)87219096 | Xiamen Lab: (0592)5568048 |
| Tianjin Lab: (022)27360730 | Suzhou Lab: (0512)62997900 | Ningbo Lab: (0574)87736499 | Chengdu Lab: (028)87702708 |