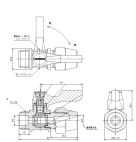


品番：EA425BF-34

品名：R 3/8"x10.0mm ボールバルブ(フレア式・ミニチュア)



販売価格	2,490円(税抜) / 2,739円(税込)		
カタログ価格	2,490円(税抜) / 2,739円(税込)		
在庫数	最新在庫: 1 (2026/06/10 23:21現在)		
商品入数	1	販売単位	個
カタログページ	1047ページ		



品番	規格	寸法	重量
BF-1310	R3/8"	10.0mm	0.05kg
BF-1315	R1/2"	15.0mm	0.08kg
BF-1320	R3/4"	20.0mm	0.12kg
BF-1325	R1"	25.0mm	0.18kg
BF-1330	R1.1/4"	31.8mm	0.25kg
BF-1335	R1.1/2"	38.1mm	0.35kg
BF-1340	R2"	50.8mm	0.55kg
BF-1345	R2.1/2"	63.5mm	0.85kg
BF-1350	R3"	76.2mm	1.25kg
BF-1355	R3.1/2"	88.9mm	1.85kg
BF-1360	R4"	101.6mm	2.65kg
BF-1365	R4.1/2"	114.3mm	3.65kg
BF-1370	R5"	127.0mm	4.85kg
BF-1375	R5.1/2"	139.7mm	6.35kg
BF-1380	R6"	152.4mm	8.05kg
BF-1385	R6.1/2"	165.1mm	10.95kg
BF-1390	R7"	177.8mm	14.15kg
BF-1395	R7.1/2"	190.5mm	18.65kg
BF-1400	R8"	203.2mm	24.45kg
BF-1405	R8.1/2"	215.9mm	31.65kg
BF-1410	R9"	228.6mm	40.15kg
BF-1415	R9.1/2"	241.3mm	50.05kg
BF-1420	R10"	254.0mm	61.35kg
BF-1425	R10.1/2"	266.7mm	74.05kg
BF-1430	R11"	279.4mm	88.15kg
BF-1435	R11.1/2"	292.1mm	103.65kg
BF-1440	R12"	304.8mm	120.55kg
BF-1445	R12.1/2"	317.5mm	138.85kg
BF-1450	R13"	330.2mm	158.55kg
BF-1455	R13.1/2"	342.9mm	179.65kg
BF-1460	R14"	355.6mm	202.15kg
BF-1465	R14.1/2"	368.3mm	226.05kg
BF-1470	R15"	381.0mm	251.35kg
BF-1475	R15.1/2"	393.7mm	278.05kg
BF-1480	R16"	406.4mm	306.15kg
BF-1485	R16.1/2"	419.1mm	335.65kg
BF-1490	R17"	431.8mm	366.55kg
BF-1495	R17.1/2"	444.5mm	398.85kg
BF-1500	R18"	457.2mm	432.55kg
BF-1505	R18.1/2"	469.9mm	467.65kg
BF-1510	R19"	482.6mm	504.15kg
BF-1515	R19.1/2"	495.3mm	542.05kg
BF-1520	R20"	508.0mm	581.35kg
BF-1525	R20.1/2"	520.7mm	622.05kg
BF-1530	R21"	533.4mm	664.15kg
BF-1535	R21.1/2"	546.1mm	707.65kg
BF-1540	R22"	558.8mm	752.55kg
BF-1545	R22.1/2"	571.5mm	808.85kg
BF-1550	R23"	584.2mm	866.55kg
BF-1555	R23.1/2"	596.9mm	925.65kg
BF-1560	R24"	609.6mm	986.15kg
BF-1565	R24.1/2"	622.3mm	1048.05kg
BF-1570	R25"	635.0mm	1111.35kg
BF-1575	R25.1/2"	647.7mm	1176.05kg
BF-1580	R26"	660.4mm	1242.15kg
BF-1585	R26.1/2"	673.1mm	1309.65kg
BF-1590	R27"	685.8mm	1378.55kg
BF-1595	R27.1/2"	698.5mm	1448.85kg
BF-1600	R28"	711.2mm	1520.55kg
BF-1605	R28.1/2"	723.9mm	1593.65kg
BF-1610	R29"	736.6mm	1668.15kg
BF-1615	R29.1/2"	749.3mm	1744.05kg
BF-1620	R30"	762.0mm	1821.35kg
BF-1625	R30.1/2"	774.7mm	1900.05kg
BF-1630	R31"	787.4mm	1980.15kg
BF-1635	R31.1/2"	800.1mm	2061.65kg
BF-1640	R32"	812.8mm	2144.55kg
BF-1645	R32.1/2"	825.5mm	2228.85kg
BF-1650	R33"	838.2mm	2314.55kg
BF-1655	R33.1/2"	850.9mm	2401.65kg
BF-1660	R34"	863.6mm	2490.15kg
BF-1665	R34.1/2"	876.3mm	2580.05kg
BF-1670	R35"	889.0mm	2671.35kg
BF-1675	R35.1/2"	901.7mm	2764.05kg
BF-1680	R36"	914.4mm	2858.15kg
BF-1685	R36.1/2"	927.1mm	2953.65kg
BF-1690	R37"	939.8mm	3050.55kg
BF-1695	R37.1/2"	952.5mm	3148.85kg
BF-1700	R38"	965.2mm	3248.55kg
BF-1705	R38.1/2"	977.9mm	3349.65kg
BF-1710	R39"	990.6mm	3452.15kg
BF-1715	R39.1/2"	1003.3mm	3556.05kg
BF-1720	R40"	1016.0mm	3661.35kg
BF-1725	R40.1/2"	1028.7mm	3768.05kg
BF-1730	R41"	1041.4mm	3876.15kg
BF-1735	R41.1/2"	1054.1mm	3985.65kg
BF-1740	R42"	1066.8mm	4096.55kg
BF-1745	R42.1/2"	1079.5mm	4208.85kg
BF-1750	R43"	1092.2mm	4322.55kg
BF-1755	R43.1/2"	1104.9mm	4437.65kg
BF-1760	R44"	1117.6mm	4554.15kg
BF-1765	R44.1/2"	1130.3mm	4672.05kg
BF-1770	R45"	1143.0mm	4791.35kg
BF-1775	R45.1/2"	1155.7mm	4912.05kg
BF-1780	R46"	1168.4mm	5034.15kg
BF-1785	R46.1/2"	1181.1mm	5157.65kg
BF-1790	R47"	1193.8mm	5282.55kg
BF-1795	R47.1/2"	1206.5mm	5408.85kg
BF-1800	R48"	1219.2mm	5536.55kg
BF-1805	R48.1/2"	1231.9mm	5665.65kg
BF-1810	R49"	1244.6mm	5796.15kg
BF-1815	R49.1/2"	1257.3mm	5928.05kg
BF-1820	R50"	1270.0mm	6061.35kg
BF-1825	R50.1/2"	1282.7mm	6196.05kg
BF-1830	R51"	1295.4mm	6332.15kg
BF-1835	R51.1/2"	1308.1mm	6469.65kg
BF-1840	R52"	1320.8mm	6608.55kg
BF-1845	R52.1/2"	1333.5mm	6748.85kg
BF-1850	R53"	1346.2mm	6890.55kg
BF-1855	R53.1/2"	1358.9mm	7033.65kg
BF-1860	R54"	1371.6mm	7178.15kg
BF-1865	R54.1/2"	1384.3mm	7324.05kg
BF-1870	R55"	1397.0mm	7471.35kg
BF-1875	R55.1/2"	1409.7mm	7619.95kg
BF-1880	R56"	1422.4mm	7770.05kg
BF-1885	R56.1/2"	1435.1mm	7921.65kg
BF-1890	R57"	1447.8mm	8074.75kg
BF-1895	R57.1/2"	1460.5mm	8229.35kg
BF-1900	R58"	1473.2mm	8385.45kg
BF-1905	R58.1/2"	1485.9mm	8543.05kg
BF-1910	R59"	1498.6mm	8702.15kg
BF-1915	R59.1/2"	1511.3mm	8862.75kg
BF-1920	R60"	1524.0mm	9024.85kg
BF-1925	R60.1/2"	1536.7mm	9188.45kg
BF-1930	R61"	1549.4mm	9353.55kg
BF-1935	R61.1/2"	1562.1mm	9520.15kg
BF-1940	R62"	1574.8mm	9688.25kg
BF-1945	R62.1/2"	1587.5mm	9857.85kg
BF-1950	R63"	1600.2mm	10028.95kg
BF-1955	R63.1/2"	1612.9mm	10201.55kg
BF-1960	R64"	1625.6mm	10375.65kg
BF-1965	R64.1/2"	1638.3mm	10551.25kg
BF-1970	R65"	1651.0mm	10728.35kg
BF-1975	R65.1/2"	1663.7mm	10906.95kg
BF-1980	R66"	1676.4mm	11087.05kg
BF-1985	R66.1/2"	1689.1mm	11268.65kg
BF-1990	R67"	1701.8mm	11451.75kg
BF-1995	R67.1/2"	1714.5mm	11636.35kg
BF-2000	R68"	1727.2mm	11822.45kg
BF-2005	R68.1/2"	1739.9mm	12009.95kg
BF-2010	R69"	1752.6mm	12198.95kg
BF-2015	R69.1/2"	1765.3mm	12389.45kg
BF-2020	R70"	1778.0mm	12581.45kg
BF-2025	R70.1/2"	1790.7mm	12774.95kg
BF-2030	R71"	1803.4mm	12969.95kg
BF-2035	R71.1/2"	1816.1mm	13166.45kg
BF-2040	R72"	1828.8mm	13364.45kg
BF-2045	R72.1/2"	1841.5mm	13563.95kg
BF-2050	R73"	1854.2mm	13764.95kg
BF-2055	R73.1/2"	1866.9mm	13967.45kg
BF-2060	R74"	1879.6mm	14171.45kg
BF-2065	R74.1/2"	1892.3mm	14376.95kg
BF-2070	R75"	1905.0mm	14583.95kg
BF-2075	R75.1/2"	1917.7mm	14792.45kg
BF-2080	R76"	1930.4mm	14992.45kg
BF-2085	R76.1/2"	1943.1mm	15193.95kg
BF-2090	R77"	1955.8mm	15395.95kg
BF-2095	R77.1/2"	1968.5mm	15599.45kg
BF-2100	R78"	1981.2mm	15804.45kg
BF-2105	R78.1/2"	1993.9mm	16010.95kg
BF-2110	R79"	2006.6mm	16218.95kg
BF-2115	R79.1/2"	2019.3mm	16428.45kg
BF-2120	R80"	2032.0mm	16639.45kg
BF-2125	R80.1/2"	2044.7mm	16851.95kg
BF-2130	R81"	2057.4mm	17065.95kg
BF-2135	R81.1/2"	2070.1mm	17281.45kg
BF-2140	R82"	2082.8mm	17498.45kg
BF-2145	R82.1/2"	2095.5mm	17716.95kg
BF-2150	R83"	2108.2mm	17936.95kg
BF-2155	R83.1/2"	2120.9mm	18158.45kg
BF-2160	R84"	2133.6mm	18381.45kg
BF-2165	R84.1/2"	2146.3mm	18605.95kg
BF-2170	R85"	2159.0mm	18831.95kg
BF-2175	R85.1/2"	2171.7mm	19059.45kg
BF-2180	R86"	2184.4mm	19288.45kg
BF-2185	R86.1/2"	2197.1mm	19518.95kg
BF-2190	R87"	2209.8mm	19750.95kg
BF-2195	R87.1/2"	2222.5mm	19984.45kg
BF-2200	R88"	2235.2mm	20219.45kg
BF-2205	R88.1/2"	2247.9mm	20455.95kg
BF-2210	R89"	2260.6mm	20693.95kg
BF-2215	R89.1/2"	2273.3mm	20933.45kg
BF-2220	R90"	2286.0mm	21174.45kg
BF-2225	R90.1/2"	2298.7mm	21416.95kg
BF-2230	R91"	2311.4mm	21660.95kg
BF-2235	R91.1/2"	2324.1mm	21906.45kg
BF-2240	R92"	2336.8mm	22153.45kg
BF-2245	R92.1/2"	2349.5mm	22401.95kg
BF-2250	R93"	2362.2mm	22651.95kg
BF-2255	R93.1/2"	2374.9mm	22903.45kg
BF-2260	R94"	2387.6mm	23156.45kg
BF-2265	R94.1/2"	2400.3mm	23410.95kg
BF-2270	R95"	2413.0mm	23666.95kg
BF-2275	R95.1/2"	2425.7mm	23924.45kg
BF-2280	R96"	2438.4mm	24183.45kg
BF-2285	R96.1/2"	2451.1mm	24443.95kg
BF-2290	R97"	2463.8mm	24705.95kg
BF-2295	R97.1/2"	2476.5mm	24969.45kg
BF-2300	R98"	2489.2mm	25234.45kg
BF-2305	R98.1/2"	2501.9mm	25500.95kg
BF-2310	R99"	2514.6mm	25768.95kg
BF-2315	R99.1/2"	2527.3mm	26038.45kg
BF-2320	R100"	2540.0mm	26309.45kg
BF-2325	R100.1/2"	2552.7mm	26581.95kg
BF-2330	R101"	2565.4mm	26855.95kg
BF-2335	R101.1/2"	2578.1mm	27131.45kg
BF-2340	R102"	2590.8mm	27408.45kg
BF-2345	R102.1/2"	2603.5mm	27686.95kg
BF-2350	R103"	2616.2mm	27966.95kg
BF-2355	R103.1/2"	2628.9mm	28248.45kg
BF-2360	R104"	2641.6mm	28531.45kg
BF-2365	R104.1/2"	2654.3mm	28815.95kg
BF-2370	R105"	2667.0mm	29101.95kg
BF-2375	R105.1/2"	2679.7mm	29389.45kg
BF-2380	R106"	2692.4mm	29678.45kg
BF-2385	R106.1/2"	2705.1mm	29969.95kg
BF-2390	R107"	2717.8mm	30262.95kg
BF-2395	R107.1/2"	2730.5mm	30557.45kg
BF-2400	R108"	2743.2mm	30853.45kg
BF-2405	R108.1/2"	2755.9mm	31150.95kg
BF-2410	R109"	2768.6mm	31449.95kg
BF-2415	R109.1/2"	2781.3mm	31750.45kg
BF-2420	R110"	2794.0mm	32052.45kg
BF-2425	R110.1/2"	2806.7mm	32355.95kg
BF-2430	R111"	2819.4mm	32660.95kg
BF-2435	R111.1/2"	2832.1mm	32967.45kg
BF-2440	R112"	2844.8mm	33275.45kg
BF-2445	R112.1/2"	2857.5mm	33584.95kg
BF-2450	R113"	2870.2mm	33895.95kg
BF-2455	R113.1/2"	2882.9mm	34208.45kg
BF-2460	R114"	2895.6mm	34522.45kg
BF-2465	R114.1/2"	2908.3mm	34837.95kg
BF-2470	R115"	2921.0mm	35154.95kg
BF-2475	R115.1/2"	2933.7mm	35473.45kg
BF-2480	R116"	2946.4mm	35793.45kg
BF-2485	R116.1/2"	2959.1mm	36114.95kg
BF-2490	R117"	2971.8mm	36436.95kg
BF-2495	R117.1/2"	2984.5mm	36759.45kg
BF-2500	R118"	2997.2mm	37083